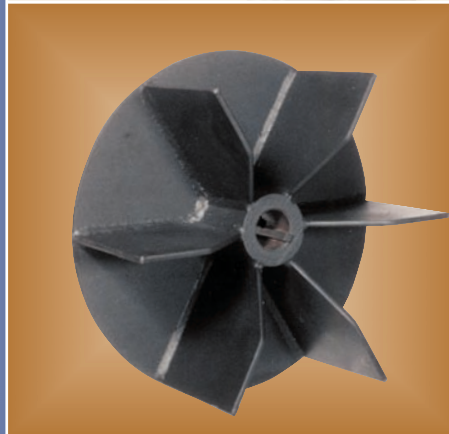


CHICAGO

Bulletin ICF 105



**Rugged
radial wheels
handle a wider
range of harsh
materials**

ICF **Industrial
Centrifugal
Fans**





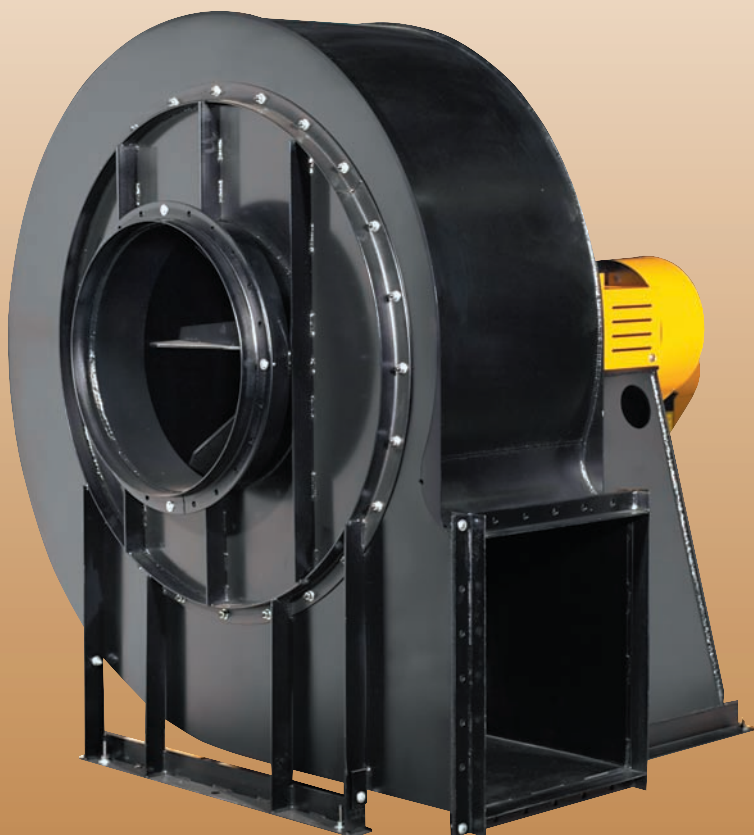
ICF Industrial Centrifugal Fans



Thousands of industrial fan requirements worldwide have been resolved with Chicago's Industrial Centrifugal Fans. With the availability of two types of rugged radial wheels, the fans handle a wider spectrum of harsh airstreams and materials. The two housing designs further assure compatibility with specific applications and installations.

Select from 14 sizes with volumes to 70,000 CFM, pressures to 40", and temperatures to 800F. Performance ratings are included in Chicago's fan.net selection program, also providing dimensions and sound data.

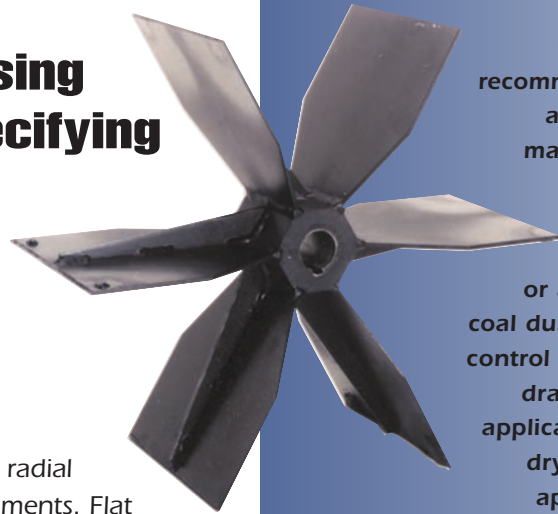
Chicago Blower's efficient and cost effective Industrial Centrifugal Fans are one of a long line of air moving products that has earned Chicago Blower the reputation as a premier industrial fan builder. For application assistance, Chicago Blower representatives are located throughout North America and around the world.



Refer to Chicago's fan.net for performance, fan curves and sound data. For software and assistance, contact your local Chicago Blower sales engineer.

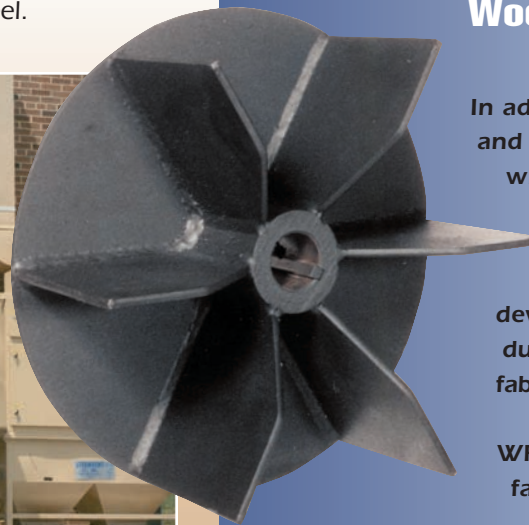
Long Shavings Wheel (LS)

Long Shaving wheels without backplate are recommended for conveying air or gases containing material that could build up on other wheels. The LS wheel is ideal for sticky, heavy or abrasive dust, such as coal dust and gritty pollution control systems, plus induced draft and industrial oven applications. First choice for dry, granular conveying, applications range from wood chips to plastics. Fan sizes 7 through 41.



Wool-Fiber Wheel (WF)

In addition to handling air and gases, the Wool-Fiber wheel with backplate is designed for long fibers and stringy material. It was developed to handle the dusty, fibrous airstreams, fabric manufacturing and paper processing. The WF wheel is available in fan sizes 5 through 21.

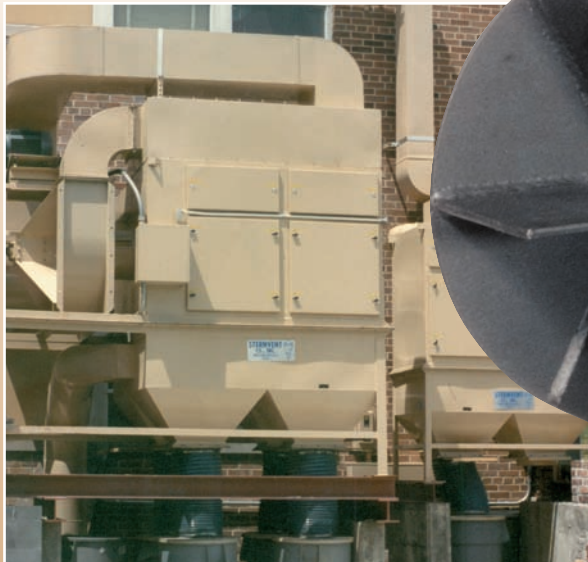


With the many wheel/housing combinations, it's like specifying a custom fan without the premium cost and long delivery time

Wheel Selection

Chicago's ICF fans are equipped with 6-bladed steel radial wheels designed for the toughest industrial environments. Flat blade surfaces prevent material build-up or deposits and are easy to clean. Wheels are statically and dynamically balanced for smooth long-lasting operation, keyed to the shaft and secured with multiple set screws. Most fan sizes can be ordered with either the Wool-Fiber Wheel or the Long-Shavings Wheel.

Compact square fans are first choice for many installations such as this four-stage fabric filter at a major pharmaceutical lab.



Right - The ideal solution for on-going road building projects is this mobile dust collector, used here for a temporary asphalt plant.

Left - Applications involving corrosive by-products or high humidity environments require rust free stainless steel fans.



Chicago's Industrial Centrifugal Fans are constructed of rugged components to provide longer life

Shafts

Selected medium carbon steel SAE 1040 to SAE 1045 is turned, ground and polished to provide secure wheel and bearing contact. Shafts are sized to run well below the first critical speed.

Bearings

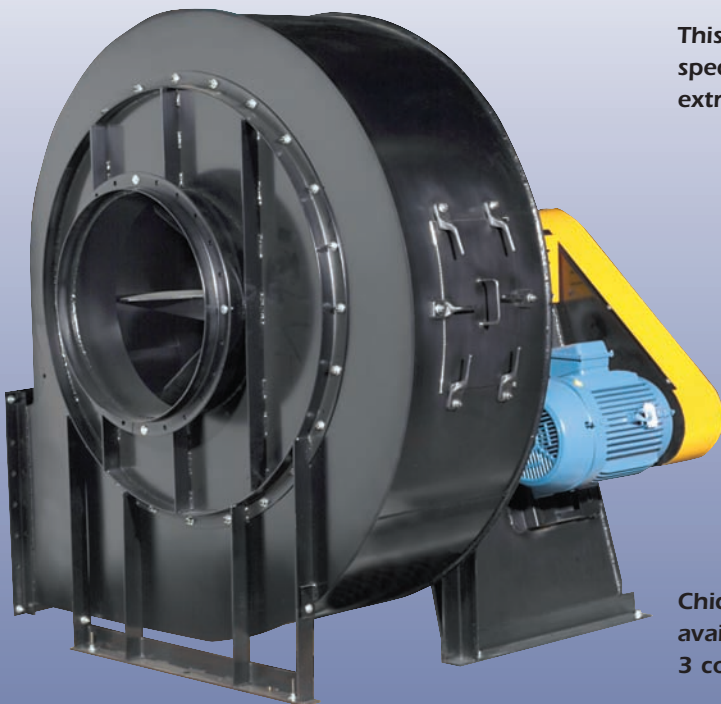
American made ball or roller bearings provide a minimum average life of 75,000 hours at maximum speeds, equal to eight hours a day, 365 days a year, for 25 years.

Housings

Most fan sizes are available with either Chicago Blower's own versatile square housing SQI, or fixed scroll design, D/16A. Both fan types are constructed of steel plate continuously welded to form a rugged stable housing. Heavy gauge mounting flanges and stiffeners add additional rigidity. Flanged outlet is standard except for bottom discharge on some sizes. Removable inlet coverplates provide wheel access.

Housing/Wheel Availability

Fan Size	Wheels		Housings	
	WF	LS	SQI	D/16A
5	X		X	
6	X		X	
7	X	X	X	
9	X	X	X	
11	X	X	X	X
13	X	X	X	X
15	X	X	X	X
17	X	X	X	X
19	X	X		X
21	X	X		X
23		X		X
26		X		X
29		X		X
33		X		X



This Size 13 fan features special insulation for extreme temperatures



Chicago's rugged D/16 fans are available in heavier-duty Class 3 construction



Packaged SQI fans are built with specified accessories, factory tested, shipped ready to run

SQI Features

The versatile Chicago Square Fan design allows the housing to be positioned on any of four sides and the fan to be run in any of eight discharge positions. Motor base has mounting holes for all discharges.



The basic SQI fan with rugged continuously welded construction

Flanged side sheets provide extra strength to an already rigid configuration. SQI fans come standard with unpunched flanged outlet and slip fit inlet.

Maximum temperature with either wheel is 650°F. Shafts run in two individual grease lubricated ball bearings mounted on a bolted removable bracket for easier service.

Chicago's SQI square design fans are available in Arrangements 1 and 9. They are also available as "packaged" fans with motor, drive and accessories installed, shipped ready to run.

Many critical processing installations require stainless steel and alternate construction



D/16A Features

Chicago's traditional fixed housing Industrial Centrifugal Fans are available as a basic Arrangement 1 in sizes 11 thru 41 or self-contained Arrangement 9 in sizes 11 thru 37. The fans are built in constructions classes 2 thru 4 to meet any duty.

With the Arrangement 1 fan, two heavy-duty ball or roller bearing pillow blocks are mounted on a pedestal attached to the housing. The fan shaft extends over the base and is keyed for mounting the drive sheave. Maximum temperature for the Arrangement 1 is 400°F, or 800°F with optional shaft cooling wheel.

The Arrangement 9 is a compact, space-saving unit with adjustable motor slide base welded to the bearing pedestal. Maximum temperature for the Arrangement 9 is 400°F or 650°F with shaft cooling wheel.

Performance Options

Punched Flanged Inlet/Outlet

Design SQI is standard with unpunched flanged outlet and slip fit inlet, both available with punched flanges. Fixed housing D/16 fans are standard with punched flanged outlet and slip fit inlet, available with unpunched flanged outlet and punched flanged inlet.

Outlet Dampers

Dampers for all fan classes are suitable for manual or automatic operation with blades perpendicular to the shaft. Dampers are furnished in standard duty to 600°F, with alternate construction available for high temperature applications to 800°F.

Access Doors

Three types – flush mounted with quick opening tension clamps; bolted for positive sealing; plug type for insulated applications. Neoprene gasket to 300°F and asbestos-free gasket to 800°F.



Shaft Cooler and Guard

Cooling wheel raises the allowable temperature limit for arrangement 1 or 9 fans from 300°F to 650°F. Adding a shaft seal on arrangement 1 fans extends the limit to 800°F. Includes expanded metal guard.

Split Housings

Fixed housing fans sizes 23-37 can be furnished with flanged horizontal split housings. Split housings are standard on size 41.

Spark Resistant Construction

AMCA Type C spark resistant construction substitutes an aluminum inlet cone and adds a drive side aluminum buffing tube between the wheel, shaft and housing. Available with all classes and sizes, arrangement 1 and 9. Maximum temperature is 600°F. Requires electrical grounding.

Unitary Base

Fan and adjustable motor base are welded onto a common base of continuously welded structural steel channel.

Inlet Box

The bolt-on inlet box simplifies ductwork connection when a straight horizontal connection is not feasible. Assures dependable fan performance when a sharp turn is required at the fan inlet. Accommodates inlet box damper.



**Shaft Seal
Bearing/Shaft
Guard**

**Extended
Grease
Fittings**

**Belt Guard
Inlet
Screen**

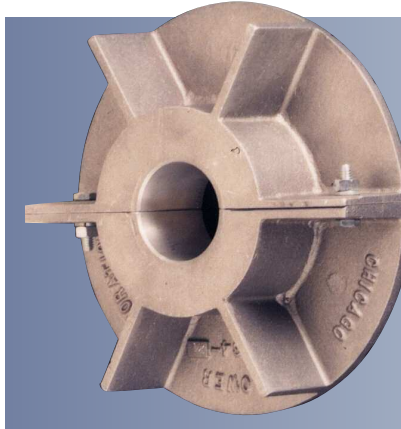
**Housing
Drain**

High Temperature Fans

Industrial Fans are perfectly suited to handling gases or air at high temperatures common to induced draft, industrial ovens, and similar applications. They are available in various drive arrangements in accordance with the chart below.

SIZE	ARR.	TYPE	MAXIMUM WITHOUT SHAFT COOLER	MAXIMUM WITH SHAFT COOLER
5-17	1, 9, 9H	SQI	300°F	650°F*
11-41	1 & 9H	16A	400°F*	800°F
11-41	9	16A	400°F*	650°F

*300°F for type AM wheel • Insulated under motor over 450°F



**Shaft Cooler
Circulates Air
Over In-Board
Bearing**

**All Furnished
With Guards
As Standard**

High Temperature and Altitude Fan Selection

Fan capacity tables are based on the fan handling standard air at 70°F. and sea level. For any other operating conditions it is necessary to correct the required SP before using the rating table. The BHP is corrected after the fan selection has been made. Then the class of fan required must be determined.

Example: Select a fan to handle 4400 CFM at 9" SP at 550°F. and 1500 feet altitude.

1. Refer to Table 1 at 1500 ft., 550°F. and select a correction factor of 2.01 — say 2.00.
2. 9" SP x 2.00 = 18" SP at 70°F. and sea level.
3. Using the fan performance tables, one selection is a size 15 LS fan to handle 4400 CFM at 18.0" SP operating at 2149 RPM requiring 19.5 BHP at 70°F. and sea level. (interpolate between 4182 and 4428 CFM to determine RPM and BHP).

4. Correct the BHP by dividing 19.5 by 2.00 i.e. 9.8 BHP which is the corrected BHP for 550°F at 1500 ft. altitude.
5. Both the wheel and shaft must be individually checked using the maximum RPM's for each (listed on the performance tables) and the individual temperature deration factors from Table II to determine which class is required.
 - a. Wheel - Divide operating RPM by the wheel deration factor in Table II. Operating RPM from Step 3 is 2149. Wheel deration factor for 550°F. is .81. Required wheel RPM at 70°F. is $2149 \div .81 = 2653$.
 - b. Shaft - Divide operating RPM by the shaft deration factor in Table II. Shaft deration factor for 550°F. is .96. Required shaft RPM at 70°F. is $2149 \div .96 = 2239$.
 - c. Using wheel and shaft RPM limits, Class III construction is required.

Note: In this example, while Class II would be suitable at 70° F. Class III is required at 550°F. because of the derated shaft RPM.

TABLE I Altitude & Correction Factors

TEMP °F	ALTITUDE (feet) WITH BAROMETRIC PRESSURE IN "Hg										
	0'	500'	1000'	1500'	2000'	2500'	3000'	3500'	4000'	4500'	5000'
-40	.79	.81	.82	.84	.85	.87	.88	.90	.92	.93	.95
0	.87	.88	.90	.92	.93	.95	.97	.99	1.00	1.02	1.04
40	.94	.96	.98	1.00	1.01	1.03	1.05	1.07	1.09	1.11	1.13
70	1.00	1.02	1.04	1.06	1.08	1.10	1.12	1.14	1.16	1.18	1.20
80	1.02	1.04	1.06	1.08	1.10	1.12	1.14	1.16	1.18	1.20	1.22
100	1.06	1.08	1.10	1.12	1.14	1.16	1.18	1.20	1.22	1.25	1.27
120	1.09	1.11	1.13	1.16	1.18	1.20	1.22	1.24	1.27	1.29	1.31
140	1.13	1.15	1.17	1.20	1.22	1.24	1.26	1.29	1.31	1.34	1.36
160	1.17	1.19	1.21	1.24	1.26	1.28	1.31	1.33	1.35	1.38	1.41
180	1.21	1.23	1.25	1.28	1.30	1.32	1.35	1.37	1.40	1.42	1.45
200	1.25	1.27	1.29	1.32	1.34	1.36	1.39	1.42	1.44	1.47	1.50
250	1.34	1.36	1.39	1.41	1.44	1.47	1.49	1.52	1.55	1.58	1.61
300	1.43	1.46	1.49	1.51	1.54	1.57	1.60	1.63	1.66	1.69	1.72
350	1.53	1.56	1.58	1.61	1.64	1.67	1.70	1.74	1.77	1.80	1.84
400	1.62	1.65	1.68	1.71	1.75	1.78	1.81	1.84	1.88	1.91	1.95
450	1.72	1.75	1.78	1.81	1.85	1.88	1.92	1.95	1.99	2.03	2.06
500	1.81	1.84	1.88	1.91	1.95	1.98	2.02	2.06	2.10	2.14	2.18
550	1.91	1.94	1.98	2.01	2.05	2.09	2.13	2.17	2.21	2.25	2.29
600	2.00	2.04	2.07	2.11	2.15	2.19	2.23	2.27	2.32	2.36	2.40
650	2.09	2.13	2.17	2.21	2.25	2.29	2.34	2.38	2.43	2.47	2.52
700	2.19	2.23	2.27	2.31	2.35	2.40	2.44	2.49	2.53	2.58	2.63
750	2.28	2.32	2.37	2.41	2.46	2.50	2.55	2.60	2.64	2.69	2.74
800	2.38	2.42	2.46	2.51	2.56	2.60	2.65	2.70	2.75	2.80	2.86

TABLE II

Temperature Deration Factors

TEMP °F	CLASS 2 & 3	CLASS 4*	SHAFT
70	1.00	1.00	1.00
100	1.00	1.00	1.00
200	.93	.96	1.00
300	.89	.95	.99
350	.88	.95	.98
400	.86	.94	.98
450	.84	.93	.97
500	.82	.92	.97
550	.81	.90	.96
600	.79	.88	.96
650	.77	.87	.95
700	.76	.86	.94
750	.72	.84	.93
800	.68	.83	.93

*For size 11 & 13 Class 4, use Class 2 & 3 Temperature Deration Factors

All of the performance tables in this bulletin have highlighted ratings which are **within two percent of peak efficiency**. This makes it easy to select the lowest horsepower unit available. Usually the most efficient selection also has the lowest sound levels so you are picking a quiet fan at the same time. Chicago Blower is concerned about reducing power consumption and will continue to provide equipment and services to achieve this purpose. ALL PERFORMANCES IN THE SHADED AREAS ARE WITHIN TWO PERCENT OF PEAK EFFICIENCY.

Size 5 WF

Wheel Diameter **8-3/4"**
 Inlet Diameter **5"**
 Outlet Area **0.136** sq. ft.

RPM Limits @70F
 WF
 Wheel **5000**
 Shaft **4600**

CFM	OV FPM	1 SP		1-1/2 SP		2 SP		2-1/2 SP		3 SP		4 SP		5 SP		6 SP		7 SP		8 SP	
		RPM	BHP	RPM	BHP	RPM	BHP	RPM	BHP	RPM	BHP	RPM	BHP	RPM	BHP	RPM	BHP	RPM	BHP	RPM	BHP
163	1200	1753	.12	2023	.18	2268	.24	2498	.32	2714	.40	3106	.58	3456	.78	3774	1.00	4067	1.25	4342	1.51
177	1300	1806	.14	2067	.19	2303	.26	2524	.33	2734	.42	3120	.60	3468	.80	3784	1.03	4077	1.27	4350	1.53
190	1400	1857	.15	2112	.21	2341	.28	2554	.35	2757	.43	3136	.62	3480	.82	3795	1.05	4086	1.29	4359	1.55
204	1500	1915	.17	2163	.23	2386	.30	2592	.37	2788	.46	3156	.64	3495	.85	3808	1.07	4098	1.32	4369	1.58
218	1600	1977	.19	2217	.25	2434	.32	2635	.40	2824	.48	3181	.67	3513	.87	3823	1.10	4111	1.35	4381	1.61
231	1700	2034	.21	2268	.28	2481	.35	2677	.42	2862	.51	3208	.69	3533	.90	3838	1.13	4124	1.38	4393	1.64
245	1800	2098	.24	2326	.30	2534	.37	2726	.45	2906	.54	3243	.72	3558	.93	3857	1.16	4140	1.41	4407	1.67
258	1900	2159	.26	2381	.33	2584	.40	2773	.48	2950	.57	3279	.76	3586	.97	3879	1.20	4157	1.45	4421	1.71
272	2000	2224	.29	2443	.36	2640	.44	2825	.52	2999	.60	3321	.79	3620	1.01	3905	1.24	4178	1.49	4439	1.75
286	2100	2291	.32	2506	.40	2698	.47	2880	.56	3050	.64	3366	.84	3659	1.05	3936	1.28	4203	1.53	4459	1.80
299	2200	2353	.35	2565	.43	2754	.51	2931	.59	3099	.68	3410	.88	3697	1.09	3969	1.33	4229	1.58	4481	1.85
313	2300	2421	.39	2630	.47	2816	.56	2989	.64	3153	.73	3459	.93	3741	1.14	4007	1.38	4261	1.63	4507	1.90
326	2400	2484	.42	2691	.51	2874	.60	3043	.68	3205	.78	3506	.97	3784	1.19	4045	1.43	4295	1.68	4535	1.96
340	2500	2553	.46	2757	.56	2938	.65	3103	.74	3262	.83	3559	1.03	3832	1.25	4089	1.49	4333	1.75	4569	2.02
354	2600	2624	.50	2824	.60	3002	.70	3166	.79	3320	.89	3612	1.09	3882	1.31	4135	1.55	4375	1.81		
381	2800	2764	.59	2953	.70	3129	.81	3288	.91	3438	1.01	3719	1.22	3982	1.44	4229	1.69	4462	1.95		
408	3000	2907	.69	3085	.81	3257	.93	3413	1.04	3560	1.14	3831	1.36	4086	1.59	4327	1.84	4555	2.11		
435	3200	3055	.81	3221	.93	3386	1.05	3541	1.18	3684	1.29	3949	1.52	4195	1.76	4430	2.01				
462	3400	3205	.94	3360	1.06	3518	1.19	3669	1.33	3810	1.46	4069	1.70	4308	1.94	4536	2.20				
490	3600	3363	1.10	3509	1.22	3657	1.35	3803	1.50	3942	1.64	4197	1.90	4431	2.16						
517	3800	3517	1.27	3655	1.39	3795	1.52	3935	1.67	4071	1.82	4322	2.11	4551	2.38						
544	4000	3673	1.45	3803	1.57	3936	1.71	4070	1.86	4202	2.02	4449	2.33								
571	4200	3830	1.65	3954	1.78	4079	1.91	4207	2.07	4334	2.23	4577	2.57								
598	4400	3988	1.87	4107	2.00	4226	2.14	4346	2.30	4468	2.46										
626	4600	4154	2.12	4266	2.26	4380	2.40	4495	2.55												
653	4800	4314	2.39	4422	2.52	4530	2.67														
680	5000	4474	2.67	4578	2.81																

Size 6 WF

Wheel Diameter **10-1/2"**
 Inlet diameter **6"**
 Outlet Area **0.196** sq. ft.

RPM Limits @70F
 WF
 Wheel **5000**
 Shaft **4200**

CFM	OV FPM	1 SP		2 SP		3 SP		4 SP		5 SP		6 SP		7 SP		8 SP		9 SP		10 SP	
		RPM	BHP	RPM	BHP	RPM	BHP	RPM	BHP	RPM	BHP	RPM	BHP	RPM	BHP	RPM	BHP	RPM	BHP	RPM	BHP
235	1200	1462	.18	1891	.35	2263	.57	2590	.83	2881	1.13	3146	1.45	3391	1.80	3620	2.17	3835	2.57	4039	2.99
255	1300	1506	.20	1920	.38	2279	.60	2601	.86	2891	1.15	3155	1.48	3399	1.83	3627	2.20	3841	2.60	4045	3.02
274	1400	1550	.22	1952	.40	2299	.63	2614	.89	2902	1.18	3164	1.51	3407	1.86	3634	2.23	3848	2.63	4051	3.05
294	1500	1597	.25	1990	.43	2324	.66	2631	.92	2914	1.22	3175	1.54	3417	1.90	3643	2.27	3856	2.67	4058	3.09
314	1600	1648	.28	2030	.46	2354	.69	2652	.96	2929	1.26	3187	1.58	3427	1.94	3652	2.32	3865	2.72	4066	3.14
333	1700	1697	.31	2069	.50	2387	.73	2675	1.00	2946	1.30	3200	1.63	3439	1.98	3663	2.36	3874	2.76	4075	3.19
353	1800	1750	.34	2113	.54	2423	.77	2704	1.04	2967	1.34	3216	1.67	3452	2.03	3674	2.41	3885	2.82	4085	3.24
372	1900	1801	.38	2155	.58	2460	.82	2734	1.09	2990	1.39	3234	1.73	3466	2.08	3686	2.47	3896	2.87	4095	3.30
392	2000	1855	.42	2202	.63	2501	.87	2769	1.14	3019	1.45	3256	1.78	3484	2.14	3701	2.53	3908	2.93	4106	3.36
412	2100	1910	.46	2250	.68	2543	.93	2807	1.20	3050	1.51	3282	1.85	3504	2.21	3717	2.59	3922	3.00	4119	3.43
431	2200	1963	.51	2297	.74	2585	.99	2844	1.26	3083	1.57	3309	1.91	3526	2.28	3736	2.66	3938	3.07	4132	3.50
451	2300	2019	.56	2348	.80	2630	1.05	2885	1.33	3119	1.65	3341	1.99	3553	2.35	3758	2.74	3957	3.15	4148	3.58
470	2400	2073	.61	2398	.86	2673	1.12	2924	1.40	3156	1.72	3373	2.06	3581	2.43	3782	2.82	3977	3.23	4165	3.67
490	2500	2130	.66	2450	.93	2720	1.20	2968	1.49	3196	1.80	3410	2.15	3614	2.51	3810	2.91	4000	3.32	4186	3.76
510	2600	2188	.72	2504	1.01	2769	1.28	3011	1.57	3237	1.89	3448	2.24	3648	2.61	3840	3.00	4027	3.42		
549	2800	2305	.85	2609	1.17	2868	1.45	3101	1.75	3321	2.08	3526	2.43	3720	2.81	3907	3.21	4086	3.63		
588	3000	2425	1.00	2716	1.34	2969	1.65	3195	1.96	3408	2.30	3608	2.65	3798	3.04	3979	3.44	4154	3.86		
627	3200	2549	1.17	2825	1.52	3073	1.87	3294	2.19	3499	2.54	3694	2.90	3879	3.29	4057	3.70				
666	3400	2674	1.36	2935	1.72	3178	2.10	3394	2.45	3593	2.80	3784	3.18	3965	3.57	4138	3.98				
706	3600	2805	1.59	3050	1.95	3288	2.36	3500	2.74	3695	3.11	3879	3.49	4055	3.89						
745	3800	2934	1.83	3165	2.19	3396	2.63	3605	3.04	3796	3.43	3974	3.82	4147	4.23						
784	4000	3064	2.09	3283	2.46	3505	2.91	3711	3.36	3899	3.78	4075	4.19								
823	4200	3196	2.38	3403	2.76	3615	3.22	3818	3.70	4003	4.15	4176	4.58								
862	4400	3328	2.70	3526	3.09	3728	3.56	3926	4.06	4109	4.54										
902	4600	3465	3.06	3653	3.46	3846	3.93	4038	4.45												
941	4800	3599	3.44	3779	3.85	3962	4.32	4148	4.86												
980	5000	3733	3.86	3906	4.27	4082	4.75														

On size 5 and 6 fans, V-belt driven operation above 3600 RPM not recommended. The performance shown is for fan with outlet duct. V-belt drive loss not included.

ICF Performance

Size 7 LS/WF

Wheel Diameter **12-1/4"**
 Inlet Diameter **7"**
 Outlet Area **0.267 sq. ft.**

RPM Limits @70F

	SQI	WF
Wheel	5000	4850
Shaft	4200	5574

CFM	OV FPM	2' SP		3' SP		4' SP		5' SP		6' SP		7' SP		8' SP		10' SP		12' SP		14' SP	
		RPM	BHP	RPM	BHP	RPM	BHP	RPM	BHP	RPM	BHP	RPM	BHP	RPM	BHP	RPM	BHP	RPM	BHP	RPM	BHP
320	1200	1581	20	1910	30	2192	42	2442	54												
374	1400	1607	23	1929	34	2207	47	2454	60	2680	74	2889	89								
427	1600	1639	26	1952	39	2225	52	2470	67	2693	82	2900	97	3094	1.13						
481	1800	1678	31	1981	44	2248	58	2489	74	2710	90	2915	1.06	3107	1.23	3460	1.59				
534	2000	1722	35	2015	50	2275	65	2512	81	2729	98	2932	1.16	3122	1.34	3473	1.72	3792	2.11	4086	2.53
587	2200	1771	40	2054	56	2308	72	2539	89	2753	1.07	2952	1.26	3140	1.45	3488	1.85	3805	2.26	4098	2.70
641	2400	1824	46	2098	63	2344	80	2570	98	2780	1.17	2976	1.36	3162	1.56	3505	1.98	3820	2.42	4111	2.87
694	2600	1881	53	2146	71	2385	89	2605	1.08	2810	1.27	3003	1.48	3186	1.69	3526	2.12	3837	2.58	4126	3.05
748	2800	1940	60	2197	79	2429	98	2644	1.18	2845	1.39	3034	1.60	3214	1.82	3549	2.27	3857	2.75	4144	3.24
801	3000	2003	68	2251	88	2477	1.08	2687	1.29	2883	1.51	3068	1.73	3245	1.96	3575	2.43	3879	2.93	4164	3.44
854	3200	2067	77	2308	98	2528	1.19	2732	1.42	2924	1.64	3106	1.87	3279	2.11	3604	2.60	3904	3.12	4185	3.65
908	3400	2134	86	2368	1.08	2582	1.31	2781	1.55	2969	1.78	3147	2.03	3316	2.27	3635	2.78	3932	3.31		
961	3600	2203	97	2429	1.20	2638	1.44	2832	1.69	3016	1.93	3190	2.19	3356	2.44	3670	2.97	3962	3.52		
1015	3800	2274	1.09	2493	1.33	2696	1.58	2886	1.83	3065	2.09	3236	2.36	3399	2.63	3707	3.17	3995	3.74		
1068	4000	2345	1.21	2559	1.47	2756	1.73	2942	1.99	3117	2.26	3285	2.54	3445	2.82	3748	3.39	4031	3.97		
1121	4200	2419	1.35	2626	1.61	2819	1.89	3000	2.16	3172	2.45	3335	2.73	3493	3.02	3790	3.61	4069	4.22		
1175	4400	2493	1.50	2695	1.78	2883	2.06	3060	2.34	3228	2.64	3388	2.94	3543	3.24	3835	3.85	4109	4.48		
1228	4600	2569	1.66	2765	1.95	2948	2.24	3121	2.54	3286	2.84	3443	3.15	3595	3.46	3882	4.10	4152	4.75		
1282	4800	2645	1.83	2837	2.13	3016	2.44	3185	2.74	3346	3.06	3500	3.38	3649	3.70	3931	4.36	4196	5.03		
1335	5000	2722	2.02	2909	2.33	3084	2.64	3249	2.96	3407	3.29	3558	3.62	3704	3.96	3982	4.64				
1388	5200	2800	2.22	2983	2.54	3154	2.87	3315	3.20	3470	3.53	3618	3.88	3761	4.22	4034	4.93				
1442	5400					●	●	3383	3.45	3534	3.79	3680	4.14	3820	4.50	4088	5.23				
1495	5600					●	●	3452	3.71	3600	4.07	3743	4.43	3881	4.80	4144	5.54				
1549	5800					●	●	3521	3.99	3667	4.36	3807	4.73	3942	5.11						
1602	6000					●	●	3592	4.28	3735	4.66	3872	5.04	4005	5.43						
1655	6200					●	●	3663	4.59	3804	4.98	3939	5.38	4069	5.78						
1709	6400					●	●	3736	4.92	3874	5.32	4006	5.73								

On this size fan, V-belt driven operation above 3600 RPM not recommended. The performance shown is for fan with outlet duct. V-belt drive loss not included. NOTE: The performance tables above are for LS and WF wheels.

Size 9 LS/WF

Wheel Diameter **15-5/8"**
 Inlet Diameter **9"**
 Outlet Area **0.43 sq. ft.**

RPM Limits @70F

	SQI	WF
Wheel	4645	3790
Shaft	3656	3989

CFM	OV FPM	2' SP		3' SP		4' SP		5' SP		6' SP		8' SP		10' SP		12' SP		14' SP		16' SP	
		RPM	BHP	RPM	BHP	RPM	BHP	RPM	BHP	RPM	BHP	RPM	BHP	RPM	BHP	RPM	BHP	RPM	BHP	RPM	BHP
516	1200	1239	32	1497	49	1718	68	1915	87												
602	1400	1259	37	1511	55	1730	76	1924	97	2101	1.20										
688	1600	1284	42	1530	63	1744	85	1936	1.08	2111	1.32	2425	1.83								
774	1800	1314	49	1552	71	1761	94	1951	1.19	2124	1.45	2435	1.99	2712	2.57						
860	2000	1348	57	1578	80	1783	1.05	1968	1.31	2139	1.58	2447	2.16	2722	2.77	2972	3.42	3204	4.09		
946	2200	1386	65	1608	90	1807	1.16	1989	1.44	2157	1.73	2461	2.34	2734	2.98	2982	3.66	3212	4.36	3427	5.09
1032	2400	1427	74	1642	1.01	1835	1.29	2013	1.58	2178	1.88	2478	2.52	2747	3.20	2994	3.91	3223	4.64	3436	5.40
1118	2600	1470	85	1679	1.13	1867	1.43	2040	1.73	2201	2.05	2496	2.72	2763	3.43	3008	4.17	3234	4.93	3447	5.73
1204	2800	1517	96	1718	1.27	1901	1.58	2070	1.90	2228	2.23	2518	2.93	2781	3.67	3023	4.44	3248	5.24	3459	6.06
1290	3000	1565	1.09	1760	1.41	1938	1.74	2103	2.08	2257	2.43	2542	3.16	2801	3.92	3040	4.72	3263	5.55	3473	6.41
1376	3200	1615	1.23	1804	1.57	1977	1.92	2138	2.28	2289	2.64	2568	3.40	2823	4.19	3059	5.02	3280	5.88	3488	6.77
1462	3400	1667	1.38	1850	1.74	2019	2.11	2176	2.48	2323	2.87	2597	3.66	2847	4.48	3080	5.34	3299	6.23	3504	7.15
1548	3600	1720	1.55	1898	1.93	2062	2.31	2215	2.71	2360	3.11	2628	3.93	2874	4.79	3104	5.67	3319	6.59	3523	7.54
1634	3800	1775	1.74	1948	2.13	2108	2.53	2257	2.94	2398	3.36	2661	4.22	2903	5.11	3129	6.03	3342	6.97	3543	7.95
1720	4000	1831	1.94	1999	2.35	2154	2.77	2300	3.20	2438	3.64	2696	4.53	2934	5.45	3156	6.40	3366	7.38	3565	8.38
1806	4200	1888	2.16	2051	2.58	2203	3.02	2345	3.47	2480	3.93	2733	4.86	2967	5.81	3186	6.79	3392	7.80	3589	8.83
1892	4400	1946	2.39	2105	2.84	2252	3.29	2391	3.76	2524	4.23	2771	5.20	3001	6.19	3217	7.20	3421	8.24	3615	9.31
1978	4600	2004	2.65	2159	3.11	2303	3.58	2439	4.07	2569	4.56	2812	5.56	3038	6.59	3250	7.63	3451	8.70		
2064	4800	2064	2.93	2215	3.41	2355	3.90	2488	4.40	2615	4.90	2853	5.94	3075	7.01	3284	8.09	3482	9.19		
2150	5000	2124	3.22	2271	3.72	2408	4.23	2538	4.75	2663	5.27	2896	6.35	3115	7.45	3320	8.56	3515	9.70		
2236	5200	2184	3.54	2328	4.06	2463	4.59	2590	5.12	2711	5.66	2941	6.77	3155	7.91	3358	9.06	3550	10.24		
2322	5400					●	●	2642	5.51	2761	6.07	2986	7.22	3197	8.39	3396	9.58	3586	10.79		
2408	5600					●	●	2695	5.93	2812	6.51	3033	7.69	3240	8.90	3437	10.13	3624	11.37		
2494	5800					●	●	2749	6.38	2864	6.97	3081	8.18	3285	9.43	3478	10.69				
2580	6000					●	●	2804	6.85	2917	7.46	3130	8.70	3330	9.98	3521	11.28				
2666	6200					●	●	2860	7.34	2970	7.97	3179	9.25	3377	10.56	3564	11.90				
2752	6400					●	●	2916	7.86	3025	8.51	3230	9.83	3424	11.17	3609	12.54				

On this size fan, V-belt driven operation above 3600 RPM not recommended. The performance shown is for fan with outlet duct. V-belt drive loss not included. NOTE: The performance tables above are for LS and WF wheels.

ICF Performance

Size 11 LS/WF

Wheel Diameter **19-1/8"**
 Inlet Diameter **11"**
 Outlet Area **0.66 sq. ft.**

Wheel
Shaft

RPM Limits @70F

SQI	C/3HD	C/3	C/4HD*	C/4*	WF
3853	3853	3853	4873	4873	3090
2980	2980	4000	4000	4800	2853

CFM	OV FPM	1' SP		2' SP		3' SP		4' SP		5' SP		6' SP		7' SP		8' SP		9' SP		10' SP	
		RPM	BHP	RPM	BHP	RPM	BHP	RPM	BHP	RPM	BHP	RPM	BHP	RPM	BHP	RPM	BHP	RPM	BHP	RPM	BHP
792	1200	722	.20	979	.39	1185	.59	1362	.81	1519	1.03	1662	1.26								
924	1400	745	.25	993	.46	1195	.68	1369	.92	1525	1.17	1666	1.42	1797	1.69	1919	1.96				
1056	1600	773	.31	1011	.54	1208	.78	1379	1.04	1532	1.31	1672	1.59	1802	1.88	1924	2.17	2038	2.47	2146	2.78
1188	1800	804	.37	1032	.63	1224	.89	1391	1.17	1542	1.46	1680	1.77	1809	2.08	1929	2.40	2043	2.72	2151	3.05
1320	2000	837	.44	1056	.72	1242	1.01	1406	1.31	1555	1.62	1691	1.95	1818	2.28	1937	2.63	2050	2.97	2157	3.33
1452	2200	871	.52	1084	.83	1263	1.15	1424	1.47	1569	1.80	1704	2.14	1829	2.50	1946	2.86	2058	3.24	2164	3.62
1584	2400	907	.61	1114	.95	1287	1.29	1443	1.64	1586	1.99	1718	2.35	1842	2.73	1958	3.12	2068	3.51	2173	3.91
1716	2600	944	.71	1146	1.08	1314	1.45	1465	1.82	1605	2.20	1735	2.58	1857	2.97	1971	3.38	2080	3.80	2184	4.22
1848	2800	982	.82	1179	1.23	1343	1.62	1490	2.02	1626	2.42	1754	2.83	1873	3.24	1986	3.66	2094	4.10	2197	4.54
1980	3000	1022	.94	1212	1.38	1374	1.81	1517	2.23	1650	2.66	1774	3.09	1892	3.53	2003	3.97	2109	4.42	2211	4.89
2112	3200	1064	1.08	1247	1.55	1406	2.01	1546	2.46	1675	2.91	1797	3.37	1912	3.83	2022	4.30	2126	4.77	2227	5.25
2244	3400	1107	1.24	1283	1.73	1439	2.22	1576	2.70	1703	3.18	1821	3.67	1934	4.15	2042	4.64	2145	5.14	2244	5.64
2376	3600	1151	1.41	1320	1.93	1472	2.45	1608	2.96	1732	3.47	1848	3.98	1958	4.49	2064	5.01	2165	5.53	2262	6.05
2508	3800	1197	1.61	1358	2.14	1507	2.69	1640	3.24	1762	3.77	1876	4.31	1984	4.85	2087	5.39	2187	5.94	2283	6.48
2640	4000	1243	1.82	1397	2.37	1542	2.95	1674	3.53	1794	4.10	1905	4.66	2011	5.23	2112	5.80	2210	6.37	2304	6.94
2772	4200	1290	2.06	1437	2.61	1578	3.23	1707	3.84	1826	4.44	1936	5.03	2040	5.63	2139	6.22	2235	6.82	2328	7.42
2904	4400	1338	2.32	1478	2.88	1615	3.52	1742	4.16	1859	4.80	1968	5.42	2070	6.04	2168	6.67	2262	7.29	2352	7.92
3036	4600	1386	2.60	1521	3.18	1653	3.84	1777	4.51	1893	5.17	2000	5.83	2101	6.48	2197	7.13	2290	7.79	2379	8.44
3168	4800	1435	2.91	1564	3.49	1691	4.17	1813	4.88	1927	5.57	2033	6.26	2133	6.94	2228	7.62	2319	8.30	2407	8.98
3300	5000	1484	3.24	1608	3.84	1731	4.53	1850	5.26	1962	5.99	2067	6.71	2166	7.42	2259	8.13	2349	8.84	2436	9.55
3432	5200	1533	3.60	1653	4.21	1772	4.91	1887	5.67	1997	6.43	2101	7.18	2199	7.93	2291	8.67	2380	9.41	2465	10.14
3564	5400	1583	3.98	1698	4.61	1813	5.32	1925	6.10	2033	6.89	2135	7.68	2232	8.46	2324	9.23	2412	9.99	2496	10.76
3696	5600	1633	4.40	1744	5.03	1855	5.76	1964	6.56	2070	7.38	2170	8.20	2266	9.01	2357	9.81	2444	10.61	2528	11.40
3828	5800	1684	4.84	1791	5.49	1898	6.23	2004	7.04	2107	7.89	2206	8.74	2301	9.58	2391	10.42	2477	11.24	2560	12.07
CFM	OV FPM	11' SP		12' SP		13' SP		14' SP		15' SP		16' SP		17' SP		18' SP		19' SP		20' SP	
		RPM	BHP	RPM	BHP	RPM	BHP	RPM	BHP	RPM	BHP	RPM	BHP	RPM	BHP	RPM	BHP	RPM	BHP	RPM	BHP
1188	1800	2254	3.39	2352	3.73	2447	4.08														
1320	2000	2259	3.69	2357	4.06	2451	4.43	2542	4.81	2630	5.19	2715	5.58	2797	5.97						
1452	2200	2265	4.00	2363	4.39	2456	4.79	2547	5.19	2634	5.60	2719	6.01	2801	6.43	2881	6.85	2959	7.27	3034	7.70
1584	2400	2274	4.32	2370	4.74	2463	5.16	2553	5.58	2640	6.01	2724	6.45	2806	6.89	2885	7.33	2963	7.78	3038	8.24
1716	2600	2283	4.65	2379	5.09	2471	5.53	2560	5.98	2647	6.44	2730	6.90	2812	7.36	2891	7.83	2968	8.31	3043	8.78
1848	2800	2295	5.00	2390	5.46	2481	5.92	2569	6.40	2655	6.88	2738	7.36	2819	7.85	2897	8.34	2974	8.84	3049	9.34
1980	3000	2308	5.36	2402	5.84	2492	6.33	2580	6.82	2666	7.33	2747	7.83	2827	8.34	2905	8.86	2982	9.38	3056	9.91
2112	3200	2323	5.74	2415	6.24	2505	6.75	2592	7.27	2676	7.79	2757	8.32	2837	8.85	2914	9.39	2990	9.94	3064	10.49
2244	3400	2339	6.15	2431	6.67	2519	7.20	2605	7.73	2688	8.28	2769	8.83	2848	9.38	2925	9.94	3000	10.51	3073	11.08
2376	3600	2356	6.58	2447	7.12	2535	7.67	2620	8.22	2702	8.78	2782	9.35	2861	9.93	2937	10.51	3011	11.10	3084	11.70
2508	3800	2375	7.04	2465	7.60	2551	8.16	2636	8.73	2717	9.32	2797	9.90	2874	10.50	2950	11.10	3024	11.71	3096	12.33
2640	4000	2396	7.52	2484	8.10	2570	8.68	2653	9.28	2734	9.88	2812	10.48	2889	11.10	2964	11.72	3037	12.35	3109	12.99
2772	4200	2417	8.02	2504	8.62	2589	9.23	2671	9.85	2751	10.47	2829	11.09	2905	11.73	2980	12.37	3052	13.02	3123	13.67
2904	4400	2441	8.54	2526	9.17	2610	9.81	2691	10.44	2770	11.09	2847	11.73	2923	12.39	2996	13.05	3068	13.71	3139	14.39
3036	4600	2465	9.09	2550	9.75	2632	10.41	2712	11.07	2790	11.73	2866	12.40	2941	13.08	3014	13.76	3085	14.44	3155	15.13
3168	4800	2492	9.66	2574	10.34	2655	11.03	2734	11.72	2811	12.40	2887	13.10	2960	13.80	3032	14.50	3103	15.20	3172	15.92
3300	5000	2519	10.26	2601	10.97	2680	11.68	2758	12.39	2834	13.10	2908	13.82	2981	14.54	3052	15.27	3122	16.00	3191	16.73
3432	5200	2548	10.88	2628	11.61	2706	12.35	2783	13.09	2858	13.83	2931	14.57	3003	15.32	3073	16.07	3142	16.82	3210	17.58
3564	5400	2578	11.52	2657	12.29	2734	13.05	2809	13.82	2883	14.58	2955	15.35	3026	16.12	3095	16.90	3164	17.67	3231	18.45
3696	5600	2608	12.19	2686	12.99	2762	13.78	2836	14.57	2909	15.37	2980	16.16	3050	16.96	3119	17.76	3186	18.56	3253	19.36
3828	5800	2639	12.89	2717	13.71	2792	14.53	2865	15.35	2936	16.17	3007	17.00	3075	17.82	3143	18.65	3210	19.47	3275	20.30
3960	6000	2671	13.61	2748	14.46	2822	15.31	2894	16.16	2965	17.01	3034	17.86	3102	18.71	3169	19.56	3234	20.42	3299	21.27
4092	6200	2704	14.37	2779	15.24	2853	16.12	2924	17.00	2994	17.88	3063	18.76	3130	19.63	3195	20.51	3260	21.39	3324	22.27
4224	6400	2736	15.14	2812	16.05	2884	16.96	2955	17.87	3024	18.77	3092	19.68	3158	20.59	3223	21.49	3287	22.40	3350	23.31
CFM	OV FPM	21' SP		22' SP		23' SP		24' SP		25' SP		26' SP		27' SP		28' SP		29' SP		30' SP	
		RPM	BHP	RPM	BHP	RPM	BHP	RPM	BHP	RPM	BHP	RPM	BHP	RPM	BHP	RPM	BHP	RPM	BHP	RPM	BHP
1584	2400	3112	8.69	3184	9.15	3255	9.62	3324	10.09												
1716	2600	3117	9.27	3189	9.75	3259	10.24	3328	10.73	3395	11.23	3461	11.73	3526	12.23	3590	12.74				
1848	2800	3122	9.85	3194	10.36	3264	10.87	3332	11.39	3400	11.91	3466	12.43	3531	12.96	3594	13.49				
1980	3000	3129	10.44	3200	10.97	3270	11.51	3338	12.05	3405	12.60	3471	13.15	3535	13.70	3599	14.26				
2112	3200	3136	11.04	3207	11.60	3277	12.16	3345	12.73	3411	13.30	3477	13.87	3541	14.45						
2244	3400	3145	11.66	3216	12.24	3284	12.83	3352	13.42	3418	14.01	3484	14.61	3548	15.21						
2376	3600	3155	12.30	3225	12.90	3294	13.51	3361	14.12	3427	14.74	3491	15.36	35							

ICF Performance

Size 13 LS/WF

Wheel Diameter **22-5/8"**
 Inlet Diameter **13"**
 Outlet Area **0.92 sq. ft.**

Wheel
Shaft

RPM Limits @70F

SQI	C/3HD	C/3	C/4HD*	C/4*	WF
3126	3126	3126	3787	3787	2522
2532	2532	3125	3600	3638	2315

CFM	OV FPM	1' SP		2' SP		3' SP		4' SP		5' SP		6' SP		7' SP		8' SP		9' SP		10' SP	
		RPM	BHP	RPM	BHP	RPM	BHP	RPM	BHP	RPM	BHP	RPM	BHP	RPM	BHP	RPM	BHP	RPM	BHP	RPM	BHP
1104	1200	610	.3	827	.5	1002	.8	1151	1.1	1284	1.4	1405	1.8								
1288	1400	629	.4	839	.6	1010	1.0	1157	1.3	1289	1.6	1408	2.0	1519	2.4	1622	2.7				
1472	1600	653	.4	854	.7	1021	1.1	1165	1.5	1295	1.8	1414	2.2	1523	2.6	1626	3.0	1723	3.5	1814	3.9
1656	1800	679	.5	872	.9	1034	1.2	1176	1.6	1303	2.0	1420	2.5	1529	2.9	1631	3.3	1727	3.8	1818	4.3
1840	2000	707	.6	892	1.0	1049	1.4	1188	1.8	1314	2.3	1429	2.7	1536	3.2	1637	3.7	1732	4.1	1823	4.6
2024	2200	735	.7	916	1.2	1067	1.6	1203	2.0	1326	2.5	1440	3.0	1546	3.5	1645	4.0	1739	4.5	1829	5.0
2208	2400	765	.8	941	1.3	1087	1.8	1220	2.3	1340	2.8	1452	3.3	1556	3.8	1655	4.3	1748	4.9	1837	5.5
2392	2600	797	1.0	966	1.5	1110	2.0	1238	2.5	1356	3.1	1466	3.6	1569	4.1	1666	4.7	1758	5.3	1846	5.9
2576	2800	829	1.1	995	1.7	1134	2.3	1259	2.8	1374	3.4	1482	3.9	1583	4.5	1679	5.1	1770	5.7	1856	6.3
2760	3000	863	1.3	1024	1.9	1160	2.5	1281	3.1	1394	3.7	1499	4.3	1599	4.9	1693	5.5	1783	6.2	1868	6.8
2944	3200	898	1.5	1053	2.2	1187	2.8	1306	3.4	1415	4.1	1518	4.7	1616	5.3	1708	6.0	1797	6.6	1882	7.3
3128	3400	934	1.7	1083	2.4	1215	3.1	1331	3.8	1438	4.4	1539	5.1	1634	5.8	1725	6.5	1812	7.2	1896	7.9
3312	3600	971	2.0	1114	2.7	1243	3.4	1358	4.1	1463	4.8	1561	5.5	1654	6.3	1744	7.0	1829	7.7	1912	8.4
3496	3800	1010	2.2	1146	3.0	1272	3.7	1385	4.5	1488	5.3	1585	6.0	1676	6.8	1763	7.5	1848	8.3	1929	9.0
3680	4000	1049	2.5	1179	3.3	1302	4.1	1413	4.9	1515	5.7	1609	6.5	1699	7.3	1785	8.1	1867	8.9	1947	9.7
3864	4200	1088	2.9	1213	3.6	1332	4.5	1442	5.3	1542	6.2	1635	7.0	1723	7.8	1807	8.7	1888	9.5	1967	10.3
4048	4400	1128	3.2	1248	4.0	1363	4.9	1471	5.8	1570	6.7	1662	7.5	1749	8.4	1831	9.3	1911	10.2	1987	11.0
4232	4600	1169	3.6	1283	4.4	1395	5.3	1500	6.3	1598	7.2	1689	8.1	1775	9.0	1856	9.9	1934	10.8	2010	11.8
4416	4800	1210	4.0	1320	4.9	1428	5.8	1531	6.8	1627	7.8	1717	8.7	1801	9.7	1882	10.6	1959	11.6	2033	12.5
4600	5000	1251	4.5	1357	5.3	1461	6.3	1562	7.3	1656	8.3	1745	9.3	1829	10.3	1908	11.3	1984	12.3	2057	13.3
4784	5200	1293	5.0	1394	5.8	1495	6.8	1593	7.9	1686	9.0	1774	10.0	1857	11.0	1935	12.1	2010	13.1	2082	14.1
4968	5400	1335	5.5	1433	6.4	1530	7.4	1625	8.5	1717	9.6	1803	10.7	1885	11.8	1963	12.8	2037	13.9	2108	15.0
5152	5600	1378	6.1	1472	7.0	1566	8.0	1658	9.1	1748	10.3	1833	11.4	1914	12.5	1991	13.7	2064	14.8	2135	15.9
5336	5800	1420	6.7	1511	7.6	1602	8.7	1692	9.8	1779	11.0	1863	12.2	1943	13.3	2019	14.5	2092	15.7	2162	16.8
CFM	OV FPM	11' SP		12' SP		13' SP		14' SP		15' SP		16' SP		17' SP		18' SP		19' SP		20' SP	
		RPM	BHP	RPM	BHP	RPM	BHP	RPM	BHP	RPM	BHP	RPM	BHP	RPM	BHP	RPM	BHP	RPM	BHP	RPM	BHP
1656	1800	1905	4.7	1988	5.2	2068	5.7														
1840	2000	1909	5.2	1992	5.7	2072	6.2	2149	6.7	2223	7.2	2295	7.8								
2024	2200	1915	5.6	1997	6.1	2076	6.7	2153	7.2	2227	7.8	2298	8.4	2368	9.0	2435	9.6	2501	10.1	2565	10.7
2208	2400	1922	6.0	2003	6.6	2082	7.2	2158	7.8	2231	8.4	2303	9.0	2372	9.6	2439	10.2	2504	10.9	2568	11.5
2392	2600	1930	6.5	2011	7.1	2089	7.7	2164	8.3	2237	9.0	2308	9.6	2377	10.3	2444	10.9	2509	11.6	2572	12.3
2576	2800	1940	7.0	2020	7.6	2097	8.3	2172	8.9	2244	9.6	2314	10.3	2383	10.9	2449	11.6	2514	12.3	2577	13.0
2760	3000	1951	7.5	2030	8.1	2106	8.8	2180	9.5	2252	10.2	2322	10.9	2390	11.6	2456	12.4	2520	13.1	2583	13.8
2944	3200	1963	8.0	2041	8.7	2117	9.4	2190	10.1	2261	10.9	2331	11.6	2398	12.4	2463	13.1	2527	13.9	2590	14.6
3128	3400	1977	8.6	2054	9.3	2129	10.0	2202	10.8	2272	11.5	2340	12.3	2407	13.1	2472	13.9	2536	14.7	2598	15.5
3312	3600	1991	9.2	2068	9.9	2142	10.7	2214	11.5	2284	12.2	2352	13.0	2418	13.8	2482	14.7	2545	15.5	2607	16.3
3496	3800	2007	9.8	2083	10.6	2156	11.4	2227	12.2	2296	13.0	2364	13.8	2429	14.6	2493	15.5	2556	16.3	2617	17.2
3680	4000	2024	10.5	2099	11.3	2171	12.1	2242	12.9	2310	13.8	2377	14.6	2442	15.5	2505	16.3	2567	17.2	2628	18.1
3864	4200	2043	11.2	2116	12.0	2188	12.9	2257	13.7	2325	14.6	2391	15.5	2455	16.3	2518	17.2	2580	18.1	2640	19.1
4048	4400	2062	11.9	2135	12.8	2205	13.7	2274	14.5	2341	15.4	2406	16.3	2470	17.3	2532	18.2	2593	19.1	2653	20.1
4232	4600	2083	12.7	2154	13.6	2224	14.5	2291	15.4	2358	16.3	2422	17.3	2485	18.2	2547	19.2	2607	20.1	2666	21.1
4416	4800	2105	13.5	2175	14.4	2243	15.4	2310	16.3	2375	17.3	2439	18.2	2501	19.2	2563	20.2	2622	21.2	2681	22.2
4600	5000	2128	14.3	2197	15.3	2264	16.3	2330	17.3	2394	18.3	2457	19.3	2519	20.3	2579	21.3	2638	22.3	2696	23.3
4784	5200	2152	15.1	2220	16.2	2286	17.2	2351	18.2	2414	19.3	2476	20.3	2537	21.3	2597	22.4	2655	23.4	2713	24.5
4968	5400	2177	16.0	2244	17.1	2309	18.2	2373	19.2	2435	20.3	2496	21.4	2556	22.5	2615	23.5	2673	24.6	2730	25.7
5152	5600	2203	17.0	2269	18.1	2333	19.2	2396	20.3	2457	21.4	2518	22.5	2577	23.6	2635	24.7	2692	25.9	2748	27.0
5336	5800	2229	17.9	2294	19.1	2358	20.2	2420	21.4	2480	22.5	2540	23.7	2598	24.8	2655	26.0	2712	27.1	2767	28.3
5520	6000	2256	19.0	2321	20.1	2383	21.3	2445	22.5	2504	23.7	2563	24.9	2620	26.1	2677	27.2	2733	28.4	2787	29.6
5704	6200	2283	20.0	2347	21.2	2409	22.4	2470	23.7	2529	24.9	2587	26.1	2644	27.3	2699	28.6	2754	29.8	2808	31.0
5888	6400	2311	21.1	2374	22.3	2436	23.6	2496	24.9	2554	26.1	2612	27.4	2668	28.7	2723	29.9	2777	31.2	2830	32.5
CFM	OV FPM	22' SP		24' SP		26' SP		28' SP		30' SP		32' SP		34' SP		36' SP		38' SP		40' SP	
		RPM	BHP	RPM	BHP	RPM	BHP	RPM	BHP	RPM	BHP	RPM	BHP	RPM	BHP	RPM	BHP	RPM	BHP	RPM	BHP
2208	2400	2692	12.8	2810	14.1																
2392	2600	2695	13.6	2813	15.0	2926	16.4	3035	17.8												
2576	2800	2700	14.4	2817	15.9	2930	17.3	3038	18.8	3143	20.3	3245	21.8								
2760	3000	2705	15.3	2822	16.8	2934	18.3	3042	19.9	3147	21.5	3248	23.0	3346	24.6	3442	26.3	3535	27.9		
2944	3200	2711	16.2	2827	17.8	2939	19.4	3047	21.0	3151	22.6	3252	24.3	3350	25.9	3445	27.6	3538	29.3		
3128	3400	2718	17.1	2833	18.7	2945	20.4	3052	22.1	3156	23.8	3257	25.5	3354	27.2	3449	29.0	3542	30.8		
3312	3600	2726	18.0	2841	19.7	2951	21.4	3058	23.2	3161	24.9	3262	26.7	3359	28.5	3454	30.4	3546	32.2		
3496	3800	2735	18.9	2849	20.7	2959	22.5	3065	24.3	3168	26.1	3268	28.0	3365	29.9	3459	31.8	3551	33.7		
3680	4000	2745	19.9	2858	21.7	2967	23.6	3073	25.5	3175	27.4	3274	29.3	3371	31.2	3465	33.2	3557	35.2		

ICF Performance

RPM Limits @70F

Wheel Diameter **26-1/8"**

Inlet Diameter **15"**

Outlet Area **1.23 sq. ft.**

Wheel
Shaft

SQI	C/3HD	C/3	C/4HD	C/4	WF
2742	2742	2742	3540	3540	2260
2181	2181	2740	3241	3254	3109

Size 15 LS/WF

CFM	OV FPM	1' SP		2' SP		3' SP		4' SP		5' SP		6' SP		7' SP		8' SP		9' SP		10' SP	
		RPM	BHP	RPM	BHP	RPM	BHP	RPM	BHP	RPM	BHP	RPM	BHP	RPM	BHP	RPM	BHP	RPM	BHP	RPM	BHP
1476	1200	528	.4	717	.7	868	1.1	997	1.5	1112	1.9	1217	2.4								
1722	1400	545	.5	727	.9	875	1.3	1002	1.7	1116	2.2	1220	2.7	1316	3.1	1405	3.6				
1968	1600	566	.6	740	1.0	884	1.5	1009	1.9	1122	2.4	1224	3.0	1319	3.5	1408	4.1	1492	4.6	1571	5.2
2214	1800	588	.7	755	1.2	896	1.7	1018	2.2	1129	2.7	1230	3.3	1324	3.9	1412	4.5	1496	5.1	1575	5.7
2460	2000	612	.8	773	1.4	909	1.9	1029	2.4	1138	3.0	1238	3.6	1331	4.3	1418	4.9	1500	5.5	1579	6.2
2706	2200	637	1.0	793	1.6	925	2.1	1042	2.7	1149	3.4	1247	4.0	1339	4.7	1425	5.3	1506	6.0	1584	6.7
2952	2400	663	1.1	815	1.8	942	2.4	1056	3.1	1161	3.7	1258	4.4	1348	5.1	1433	5.8	1514	6.5	1591	7.3
3198	2600	690	1.3	838	2.0	962	2.7	1073	3.4	1175	4.1	1270	4.8	1359	5.5	1443	6.3	1523	7.1	1599	7.9
3444	2800	719	1.5	863	2.3	983	3.0	1091	3.8	1190	4.5	1284	5.3	1371	6.0	1454	6.8	1533	7.6	1608	8.5
3690	3000	748	1.8	887	2.6	1005	3.4	1110	4.2	1207	5.0	1299	5.8	1385	6.6	1466	7.4	1544	8.2	1618	9.1
3936	3200	778	2.0	913	2.9	1029	3.7	1131	4.6	1226	5.4	1315	6.3	1400	7.1	1480	8.0	1556	8.9	1630	9.8
4182	3400	810	2.3	939	3.2	1053	4.1	1154	5.0	1246	5.9	1333	6.8	1416	7.7	1495	8.6	1570	9.6	1642	10.5
4428	3600	842	2.6	966	3.6	1077	4.6	1177	5.5	1267	6.5	1352	7.4	1433	8.4	1510	9.3	1585	10.3	1656	11.3
4674	3800	875	3.0	994	4.0	1103	5.0	1200	6.0	1290	7.0	1373	8.0	1452	9.0	1528	10.0	1601	11.1	1671	12.1
4920	4000	909	3.4	1022	4.4	1128	5.5	1225	6.6	1313	7.6	1395	8.7	1472	9.7	1546	10.8	1618	11.9	1687	12.9
5166	4200	944	3.8	1052	4.9	1155	6.0	1249	7.1	1336	8.3	1417	9.4	1493	10.5	1566	11.6	1636	12.7	1704	13.8
5412	4400	979	4.3	1082	5.4	1182	6.6	1275	7.8	1360	8.9	1440	10.1	1515	11.3	1587	12.4	1655	13.6	1722	14.7
5658	4600	1014	4.8	1113	5.9	1209	7.1	1300	8.4	1385	9.6	1464	10.9	1538	12.1	1608	13.3	1676	14.5	1741	15.7
5904	4800	1050	5.4	1144	6.5	1238	7.8	1327	9.1	1410	10.4	1488	11.7	1561	12.9	1631	14.2	1697	15.5	1761	16.7
6150	5000	1086	6.0	1176	7.1	1267	8.4	1354	9.8	1435	11.2	1512	12.5	1585	13.8	1654	15.2	1719	16.5	1782	17.8
6396	5200	1122	6.7	1209	7.8	1296	9.1	1381	10.6	1461	12.0	1537	13.4	1609	14.8	1677	16.1	1742	17.5	1804	18.9
6642	5400	1158	7.4	1242	8.6	1326	9.9	1409	11.4	1488	12.8	1563	14.3	1634	15.8	1701	17.2	1765	18.6	1827	20.0
6888	5600	1195	8.2	1276	9.4	1357	10.7	1437	12.2	1515	13.7	1588	15.3	1658	16.8	1725	18.3	1789	19.8	1850	21.2
7134	5800	1232	9.0	1310	10.2	1389	11.6	1466	13.1	1542	14.7	1615	16.3	1684	17.8	1750	19.4	1813	20.9	1873	22.5
CFM	OV FPM	11' SP		12' SP		13' SP		14' SP		15' SP		16' SP		17' SP		18' SP		19' SP		20' SP	
		RPM	BHP	RPM	BHP	RPM	BHP	RPM	BHP	RPM	BHP	RPM	BHP	RPM	BHP	RPM	BHP	RPM	BHP	RPM	BHP
2214	1800	1650	6.3	1722	7.0	1791	7.6														
2460	2000	1654	6.9	1725	7.6	1794	8.3	1861	9.0	1925	9.7	1987	10.4	2048	11.1						
2706	2200	1658	7.5	1730	8.2	1798	8.9	1864	9.7	1928	10.4	1990	11.2	2050	12.0	2109	12.8	2166	13.6	2221	14.4
2952	2400	1664	8.1	1735	8.8	1803	9.6	1869	10.4	1932	11.2	1994	12.0	2054	12.8	2112	13.7	2169	14.5	2224	15.4
3198	2600	1671	8.7	1741	9.5	1809	10.3	1874	11.2	1937	12.0	1999	12.9	2058	13.7	2116	14.6	2173	15.5	2228	16.4
3444	2800	1680	9.3	1749	10.2	1816	11.0	1881	11.9	1943	12.8	2004	13.7	2063	14.6	2121	15.5	2177	16.5	2232	17.4
3690	3000	1690	10.0	1758	10.9	1824	11.8	1888	12.7	1951	13.7	2011	14.6	2070	15.6	2127	16.5	2183	17.5	2237	18.5
3936	3200	1700	10.7	1768	11.6	1834	12.6	1897	13.5	1959	14.5	2018	15.5	2077	16.5	2133	17.5	2189	18.5	2243	19.6
4182	3400	1712	11.5	1779	12.4	1844	13.4	1907	14.4	1968	15.4	2027	16.5	2085	17.5	2141	18.5	2196	19.6	2250	20.7
4428	3600	1725	12.3	1791	13.3	1855	14.3	1918	15.3	1978	16.4	2037	17.4	2094	18.5	2150	19.6	2204	20.7	2258	21.8
4674	3800	1739	13.1	1804	14.2	1868	15.2	1929	16.3	1989	17.4	2047	18.5	2104	19.6	2159	20.7	2213	21.8	2266	23.0
4920	4000	1753	14.0	1818	15.1	1881	16.2	1942	17.3	2001	18.4	2059	19.5	2115	20.7	2170	21.8	2223	23.0	2276	24.2
5166	4200	1769	14.9	1833	16.1	1895	17.2	1955	18.3	2014	19.5	2071	20.7	2127	21.9	2181	23.0	2234	24.3	2286	25.5
5412	4400	1786	15.9	1849	17.1	1910	18.3	1970	19.5	2028	20.7	2084	21.9	2139	23.1	2193	24.3	2246	25.6	2298	26.8
5658	4600	1804	16.9	1866	18.2	1926	19.4	1985	20.6	2042	21.9	2098	23.1	2153	24.4	2206	25.6	2258	26.9	2309	28.2
5904	4800	1824	18.0	1884	19.3	1944	20.5	2001	21.8	2058	23.1	2113	24.4	2167	25.7	2220	27.0	2271	28.3	2322	29.7
6150	5000	1844	19.1	1903	20.4	1962	21.8	2019	23.1	2074	24.4	2129	25.8	2182	27.1	2234	28.4	2285	29.8	2336	31.2
6396	5200	1865	20.3	1923	21.6	1981	23.0	2037	24.4	2092	25.8	2145	27.2	2198	28.5	2250	29.9	2300	31.3	2350	32.7
6642	5400	1886	21.5	1944	22.9	2001	24.3	2056	25.7	2110	27.2	2163	28.6	2215	30.0	2266	31.5	2316	32.9	2365	34.4
6888	5600	1909	22.7	1966	24.2	2022	25.7	2076	27.1	2129	28.6	2181	30.1	2232	31.6	2283	33.1	2332	34.6	2381	36.1
7134	5800	1932	24.0	1988	25.5	2043	27.1	2097	28.6	2149	30.1	2201	31.7	2251	33.2	2301	34.7	2349	36.3	2397	37.8
7380	6000	1955	25.4	2011	26.9	2065	28.5	2118	30.1	2170	31.7	2221	33.3	2270	34.9	2319	36.5	2367	38.0	2415	39.6
7626	6200	1979	26.8	2034	28.4	2088	30.0	2140	31.7	2191	33.3	2241	34.9	2291	36.6	2339	38.2	2386	39.9	2433	41.5
7872	6400	2003	28.2	2058	29.9	2111	31.6	2163	33.3	2213	35.0	2263	36.7	2311	38.4	2359	40.0	2406	41.7	2452	43.4
CFM	OV FPM	22' SP		24' SP		26' SP		28' SP		30' SP		32' SP		34' SP		36' SP		38' SP		40' SP	
		RPM	BHP	RPM	BHP	RPM	BHP	RPM	BHP	RPM	BHP	RPM	BHP	RPM	BHP	RPM	BHP	RPM	BHP	RPM	BHP
2952	2400	2331	17.1	2433	18.8																
3198	2600	2334	18.2	2436	20.0	2534	21.9	2628	23.8												
3444	2800	2338	19.3	2440	21.2	2537	23.2	2631	25.2	2722	27.2	2810	29.2								
3690	3000	2343	20.5	2444	22.5	2541	24.5	2635	26.6	2725	28.7	2813	30.8	2898	32.9	2981	35.1	3062	37.3		
3936	3200	2348	21.6	2448	23.7	2545	25.9	2639	28.0	2729	30.2	2816	32.4	2901	34.6	2984	36.9	3064	39.2	3143	41.5
4182	3400	2354	22.8	2454	25.0	2550	27.2	2643	29.5	2733	31.8	2820	34.1	2905	36.4	2987	38.7	3067	41.1	3146	43.5
4428	3600	2361	24.0	2460	26.3	2556	28.6	2648	31.0	2738	33.3	2825	35.7	2909	38.1	2991	40.6	3071	43.0	3149	45.5
4674	3800	2369	25.3	2467	27.7	2562	30.1	2654	32.5	2743	34.9	2830	37.4	2914	39.9	2996	42.5	3075	45.0	3153	47.6
4920	4000	2378																			

ICF Performance

RPM Limits @70F

Wheel Diameter **29-5/8"**

Inlet Diameter **17"**

Outlet Area **1.58 sq. ft.**

Wheel Shaft

SQI	C/3HD	C/3	C/4HD	C/4	WF
2348	2348	2348	3031	3031	2000
1930	1930	2350	2867	3030	2402

Size 17 LS/WF

CFM	OV FPM	1' SP		2' SP		3' SP		4' SP		5' SP		6' SP		7' SP		8' SP		9' SP		10' SP	
		RPM	BHP	RPM	BHP	RPM	BHP	RPM	BHP	RPM	BHP	RPM	BHP	RPM	BHP	RPM	BHP	RPM	BHP	RPM	BHP
1896	1200	467	.5	632	.9	763	1.4														
2212	1400	483	.6	642	1.1	771	1.6	882	2.1	980	2.6										
2528	1600	501	.7	654	1.3	781	1.8	890	2.4	987	3.0	1075	3.6								
2844	1800	521	.9	668	1.5	791	2.1	899	2.8	995	3.4	1083	4.1	1164	4.8	1240	5.4				
3160	2000	543	1.1	685	1.7	804	2.4	909	3.1	1004	3.8	1091	4.6	1172	5.3	1248	6.0	1319	6.8	1386	7.6
3476	2200	566	1.3	702	2.0	818	2.7	921	3.5	1015	4.2	1101	5.0	1181	5.8	1256	6.7	1326	7.5	1393	8.3
3792	2400	591	1.5	721	2.3	834	3.1	935	3.9	1026	4.7	1111	5.6	1190	6.4	1264	7.3	1335	8.2	1401	9.1
4108	2600	616	1.8	742	2.6	852	3.5	950	4.3	1039	5.2	1122	6.1	1200	7.0	1274	8.0	1344	8.9	1410	9.9
4424	2800	642	2.1	764	3.0	870	3.9	966	4.8	1053	5.7	1135	6.7	1212	7.7	1284	8.7	1353	9.7	1419	10.7
4740	3000	669	2.4	787	3.4	890	4.3	983	5.3	1069	6.3	1149	7.3	1224	8.3	1296	9.4	1364	10.4	1429	11.5
5056	3200	697	2.8	811	3.8	911	4.8	1001	5.9	1086	6.9	1164	8.0	1238	9.1	1308	10.1	1376	11.3	1440	12.4
5372	3400	725	3.2	836	4.3	933	5.4	1021	6.4	1103	7.6	1180	8.7	1253	9.8	1322	11.0	1388	12.1	1452	13.3
5688	3600	755	3.6	861	4.8	956	6.0	1041	7.1	1122	8.3	1198	9.5	1269	10.7	1337	11.9	1402	13.1	1464	14.3
6004	3800	784	4.1	887	5.3	979	6.6	1063	7.8	1141	9.0	1215	10.3	1286	11.5	1353	12.8	1417	14.1	1478	15.3
6320	4000	814	4.7	913	5.9	1004	7.3	1085	8.5	1162	9.8	1234	11.1	1303	12.4	1369	13.8	1432	15.1	1493	16.4
6636	4200	845	5.3	940	6.6	1028	8.0	1109	9.3	1183	10.7	1254	12.0	1322	13.4	1387	14.8	1449	16.2	1508	17.6
6952	4400	876	6.0	968	7.3	1054	8.8	1132	10.2	1205	11.6	1274	13.0	1341	14.4	1405	15.9	1466	17.3	1525	18.8
7268	4600	907	6.7	996	8.1	1079	9.6	1157	11.1	1228	12.6	1296	14.0	1361	15.5	1423	17.0	1484	18.5	1542	20.1
7584	4800	939	7.5	1025	8.9	1105	10.5	1181	12.1	1252	13.6	1318	15.1	1382	16.6	1443	18.2	1502	19.8	1560	21.4
7900	5000	971	8.3	1054	9.8	1132	11.4	1206	13.1	1276	14.7	1341	16.3	1403	17.9	1463	19.4	1521	21.1	1578	22.7
8216	5200	1003	9.3	1083	10.8	1159	12.4	1232	14.1	1300	15.9	1364	17.5	1425	19.2	1484	20.8	1541	22.5	1597	24.2
8532	5400	1035	10.3	1113	11.8	1187	13.5	1258	15.3	1325	17.1	1388	18.8	1448	20.5	1506	22.2	1562	23.9	1616	25.7
8848	5600	1067	11.3	1143	12.9	1215	14.6	1284	16.5	1350	18.3	1412	20.2	1472	22.0	1529	23.7	1583	25.5	1637	27.3
9164	5800	1100	12.5	1174	14.1	1244	15.9	1311	17.7	1375	19.7	1437	21.6	1496	23.5	1552	25.3	1606	27.1	1658	28.9
CFM	OV FPM	11' SP		12' SP		13' SP		14' SP		15' SP		16' SP		17' SP		18' SP		19' SP		20' SP	
		RPM	BHP	RPM	BHP	RPM	BHP	RPM	BHP	RPM	BHP	RPM	BHP	RPM	BHP	RPM	BHP	RPM	BHP	RPM	BHP
3476	2200	1457	9.1	1519	10.0																
3792	2400	1465	10.0	1526	10.9	1585	11.8	1641	12.7												
4108	2600	1473	10.8	1534	11.8	1592	12.8	1649	13.7	1703	14.7	1756	15.7	1807	16.7						
4424	2800	1482	11.7	1542	12.7	1600	13.8	1656	14.8	1711	15.9	1763	16.9	1814	18.0	1864	19.0	1912	20.1	1959	21.1
4740	3000	1491	12.6	1551	13.7	1609	14.8	1665	15.9	1719	17.0	1771	18.1	1822	19.3	1871	20.4	1919	21.5	1966	22.6
5056	3200	1502	13.5	1561	14.7	1618	15.9	1674	17.0	1727	18.2	1779	19.4	1830	20.6	1879	21.8	1927	23.0	1974	24.2
5372	3400	1513	14.5	1571	15.7	1628	17.0	1683	18.2	1737	19.4	1788	20.7	1839	21.9	1888	23.2	1935	24.5	1982	25.7
5688	3600	1525	15.5	1583	16.8	1639	18.1	1693	19.4	1746	20.7	1798	22.0	1848	23.3	1897	24.6	1944	26.0	1990	27.3
6004	3800	1537	16.6	1595	17.9	1650	19.3	1704	20.6	1757	22.0	1808	23.4	1858	24.7	1906	26.1	1953	27.5	1999	28.9
6320	4000	1551	17.8	1608	19.1	1663	20.5	1716	21.9	1768	23.3	1819	24.8	1868	26.2	1916	27.6	1963	29.1	2009	30.6
6636	4200	1566	19.0	1622	20.4	1676	21.8	1729	23.3	1780	24.7	1830	26.2	1879	27.7	1927	29.2	1973	30.7	2019	32.2
6952	4400	1582	20.3	1637	21.7	1690	23.2	1742	24.7	1793	26.2	1842	27.7	1891	29.3	1938	30.8	1984	32.4	2029	34.0
7268	4600	1598	21.6	1652	23.1	1705	24.6	1756	26.2	1806	27.7	1855	29.3	1903	30.9	1950	32.5	1996	34.1	2040	35.7
7584	4800	1615	23.0	1669	24.6	1721	26.2	1771	27.7	1821	29.4	1869	31.0	1916	32.6	1963	34.2	2008	35.9	2052	37.6
7900	5000	1633	24.4	1686	26.1	1737	27.7	1787	29.4	1836	31.0	1884	32.7	1930	34.4	1976	36.1	2021	37.8	2065	39.5
8216	5200	1651	25.9	1703	27.6	1754	29.4	1804	31.1	1852	32.8	1899	34.5	1945	36.3	1990	38.0	2035	39.8	2078	41.5
8532	5400	1670	27.5	1721	29.2	1772	31.0	1821	32.8	1868	34.6	1915	36.4	1961	38.2	2005	40.0	2049	41.8	2092	43.6
8848	5600	1689	29.1	1740	30.9	1790	32.8	1838	34.7	1885	36.5	1932	38.4	1977	40.2	2021	42.1	2064	44.0	2107	45.8
9164	5800	1709	30.8	1759	32.7	1808	34.6	1856	36.5	1903	38.5	1949	40.4	1993	42.3	2037	44.3	2080	46.2	2122	48.1
9480	6000	1730	32.6	1779	34.5	1828	36.5	1875	38.5	1921	40.5	1966	42.5	2011	44.5	2054	46.5	2096	48.5	2138	50.5
9796	6200	1752	34.5	1800	36.5	1847	38.5	1894	40.5	1940	42.6	1984	44.6	2028	46.7	2071	48.8	2113	50.8	2154	52.9
10112	6400	1774	36.5	1821	38.5	1868	40.6	1914	42.6	1959	44.7	2003	46.9	2046	49.0	2089	51.1	2130	53.3	2171	55.4
CFM	OV FPM	22' SP		24' SP		26' SP		28' SP		30' SP		32' SP		34' SP		36' SP		38' SP		40' SP	
		RPM	BHP	RPM	BHP	RPM	BHP	RPM	BHP	RPM	BHP	RPM	BHP	RPM	BHP	RPM	BHP	RPM	BHP	RPM	BHP
4740	3000	2057	24.9																		
5056	3200	2064	26.6	2151	29.0	2234	31.4														
5372	3400	2072	28.3	2158	30.8	2241	33.4	2321	35.9	2398	38.5										
5688	3600	2080	30.0	2166	32.6	2249	35.3	2328	38.0	2405	40.8	2480	43.5								
6004	3800	2089	31.7	2174	34.5	2257	37.3	2336	40.2	2413	43.0	2487	45.9	2560	48.8	2630	51.6				
6320	4000	2098	33.5	2183	36.4	2265	39.4	2344	42.4	2421	45.3	2495	48.3	2567	51.3	2637	54.3	2705	57.4	2772	60.4
6636	4200	2107	35.3	2192	38.4	2274	41.5	2353	44.6	2429	47.7	2503	50.8	2575	53.9	2645	57.1	2713	60.2	2779	63.4
6952	4400	2117	37.1	2201	40.3	2283	43.6	2361	46.8	2437	50.0	2511	53.3	2583	56.6	2653	59.8	2720	63.1	2787	66.4
7268	4600	2128	39.0	2211	42.4	2292	45.7	2370	49.1	2446	52.4	2520	55.8	2591	59.2	2661	62.7	2728	66.1	2795	69.5
7584	4800	2139	41.0	2222	44.4	2302	47.9	2380	51.4	2456	54.9	2529	58.4	2600	61.9	2669	65.5	2737	69.0	2803	72.6
7900	5000	2150	43.0	2233	46.6	2313	50.1	2390	53.8	2465	57.4	2538	61.0	2609	64.7	2678	68.4	2745	72.1	2811	75.8
8216	5200	2163	45.1	2245	48.8																

ICF Performance

Size 19 LS/WF

Wheel Diameter **33"**
 Inlet Diameter **19"**
 Outlet Area **1.97 sq. ft.**

Wheel
Shaft

RPM Limits @70F

C/2	C/3HD	C/3	C/4HD	C/4	WF
2190	2190	2190	2827	2827	1790
1988	1988	2192	2400	2639	2055

CFM	OV FPM	1' SP		2' SP		3' SP		4' SP		5' SP		6' SP		7' SP		8' SP		9' SP		10' SP	
		RPM	BHP	RPM	BHP	RPM	BHP	RPM	BHP	RPM	BHP	RPM	BHP	RPM	BHP	RPM	BHP	RPM	BHP	RPM	BHP
2364	1200	420	.6	568	1.1	685	1.7														
2758	1400	434	.7	577	1.3	692	2.0	792	2.6	879	3.3										
3152	1600	450	.9	588	1.6	701	2.3	799	3.0	886	3.8	966	4.5								
3546	1800	468	1.1	600	1.8	711	2.6	807	3.4	894	4.3	972	5.1	1045	5.9	1113	6.8				
3940	2000	488	1.3	615	2.1	722	3.0	817	3.9	902	4.8	980	5.7	1052	6.6	1120	7.5	1184	8.5	1244	9.4
4334	2200	509	1.6	631	2.5	735	3.4	827	4.3	911	5.3	988	6.3	1060	7.3	1127	8.3	1191	9.3	1251	10.4
4728	2400	531	1.9	648	2.8	750	3.8	839	4.8	922	5.9	998	6.9	1069	8.0	1135	9.1	1198	10.2	1258	11.3
5122	2600	554	2.2	667	3.2	765	4.3	853	5.4	933	6.5	1008	7.6	1078	8.8	1144	9.9	1206	11.1	1266	12.3
5516	2800	577	2.6	687	3.7	782	4.8	868	6.0	946	7.1	1019	8.3	1088	9.5	1153	10.8	1215	12.0	1274	13.3
5910	3000	602	3.0	708	4.2	800	5.4	883	6.6	960	7.9	1032	9.1	1100	10.4	1164	11.7	1225	13.0	1283	14.4
6304	3200	627	3.4	730	4.8	818	6.0	900	7.3	975	8.6	1046	10.0	1112	11.3	1175	12.7	1235	14.1	1293	15.5
6698	3400	653	4.0	752	5.3	838	6.7	917	8.1	991	9.5	1060	10.9	1126	12.3	1188	13.7	1247	15.1	1304	16.6
7092	3600	679	4.5	774	6.0	859	7.4	936	8.9	1008	10.3	1076	11.8	1140	13.3	1201	14.8	1259	16.3	1315	17.8
7486	3800	706	5.2	798	6.7	881	8.2	955	9.7	1026	11.2	1092	12.8	1155	14.4	1215	16.0	1272	17.5	1328	19.1
7880	4000	733	5.9	821	7.4	902	9.1	976	10.7	1044	12.2	1109	13.9	1171	15.5	1230	17.2	1287	18.8	1341	20.5
8274	4200	760	6.6	846	8.3	925	10.0	997	11.7	1063	13.3	1127	15.0	1188	16.7	1246	18.5	1301	20.2	1355	22.0
8668	4400	788	7.5	871	9.1	947	11.0	1018	12.8	1083	14.5	1145	16.2	1205	18.0	1262	19.8	1317	21.6	1370	23.5
9062	4600	817	8.4	896	10.1	971	12.0	1040	13.9	1104	15.7	1165	17.5	1223	19.3	1279	21.2	1333	23.1	1385	25.0
9456	4800	845	9.4	922	11.2	994	13.1	1062	15.1	1125	17.0	1185	18.9	1242	20.8	1297	22.7	1350	24.7	1401	26.7
9850	5000	874	10.5	948	12.3	1018	14.3	1085	16.3	1147	18.4	1206	20.4	1261	22.3	1315	24.3	1367	26.3	1418	28.4
10244	5200	903	11.6	975	13.5	1043	15.5	1108	17.7	1169	19.8	1227	21.9	1281	23.9	1334	26.0	1385	28.1	1435	30.2
10638	5400	932	12.9	1001	14.8	1068	16.9	1131	19.1	1191	21.3	1248	23.5	1302	25.7	1354	27.8	1404	29.9	1453	32.1
11032	5600	961	14.2	1029	16.2	1093	18.3	1155	20.6	1214	22.9	1270	25.2	1323	27.5	1374	29.6	1423	31.8	1471	34.1
11426	5800	990	15.6	1056	17.7	1119	19.9	1179	22.2	1237	24.6	1292	27.0	1345	29.3	1395	31.6	1443	33.9	1490	36.2
CFM	OV FPM	11' SP		12' SP		13' SP		14' SP		15' SP		16' SP		17' SP		18' SP		19' SP		20' SP	
		RPM	BHP	RPM	BHP	RPM	BHP	RPM	BHP	RPM	BHP	RPM	BHP	RPM	BHP	RPM	BHP	RPM	BHP	RPM	BHP
4334	2200	1308	11.4	1363	12.4																
4728	2400	1315	12.4	1370	13.6	1423	14.7	1473	15.8	1522	16.9										
5122	2600	1323	13.5	1377	14.7	1430	15.9	1480	17.1	1529	18.3	1576	19.6	1622	20.8						
5516	2800	1331	14.6	1385	15.9	1437	17.2	1487	18.5	1536	19.8	1583	21.1	1629	22.4	1673	23.7	1717	25.0	1759	26.4
5910	3000	1339	15.7	1393	17.1	1445	18.5	1495	19.8	1543	21.2	1590	22.6	1636	24.0	1680	25.4	1723	26.8	1765	28.2
6304	3200	1348	16.9	1402	18.3	1453	19.8	1503	21.3	1551	22.7	1598	24.2	1643	25.7	1687	27.2	1730	28.6	1772	30.1
6698	3400	1358	18.1	1411	19.6	1462	21.2	1512	22.7	1559	24.2	1606	25.8	1651	27.4	1695	28.9	1738	30.5	1780	32.1
7092	3600	1369	19.4	1421	21.0	1472	22.6	1521	24.2	1568	25.8	1614	27.4	1659	29.1	1703	30.7	1746	32.4	1787	34.0
7486	3800	1381	20.7	1432	22.4	1482	24.0	1531	25.7	1578	27.4	1623	29.1	1668	30.8	1711	32.6	1754	34.3	1795	36.0
7880	4000	1393	22.2	1442	23.9	1493	25.6	1541	27.3	1588	29.1	1633	30.9	1677	32.7	1720	34.5	1763	36.3	1804	38.1
8274	4200	1407	23.7	1457	25.4	1505	27.2	1553	29.0	1599	30.8	1644	32.7	1687	34.5	1730	36.4	1772	38.3	1813	40.2
8668	4400	1421	25.3	1470	27.1	1518	28.9	1565	30.8	1610	32.7	1655	34.6	1698	36.5	1740	38.4	1782	40.4	1822	42.3
9062	4600	1436	27.0	1484	28.9	1532	30.8	1578	32.7	1623	34.6	1666	36.6	1709	38.5	1751	40.5	1792	42.5	1832	44.6
9456	4800	1451	28.7	1499	30.7	1546	32.7	1591	34.6	1636	36.6	1679	38.6	1721	40.7	1763	42.7	1803	44.8	1843	46.9
9850	5000	1467	30.5	1514	32.5	1561	34.6	1606	36.7	1649	38.8	1692	40.8	1734	42.9	1775	45.0	1815	47.2	1855	49.3
10244	5200	1483	32.3	1530	34.5	1576	36.7	1620	38.8	1664	41.0	1706	43.1	1747	45.3	1788	47.4	1828	49.6	1867	51.8
10638	5400	1500	34.3	1547	36.5	1592	38.8	1636	41.0	1679	43.2	1720	45.5	1761	47.7	1801	49.9	1841	52.2	1879	54.5
11032	5600	1518	36.3	1564	38.6	1608	40.9	1651	43.3	1694	45.6	1735	47.9	1776	50.2	1815	52.6	1854	54.9	1892	57.2
11426	5800	1536	38.5	1581	40.8	1625	43.2	1668	45.6	1710	48.0	1751	50.5	1791	52.9	1830	55.3	1869	57.6	1906	60.0
11820	6000	1555	40.7	1599	43.1	1642	45.6	1685	48.1	1726	50.6	1767	53.1	1806	55.5	1845	58.0	1883	60.5	1921	63.0
12214	6200	1574	43.1	1618	45.6	1660	48.1	1702	50.6	1743	53.2	1783	55.7	1822	58.3	1861	60.9	1898	63.5	1936	66.0
12608	6400	1594	45.6	1637	48.1	1679	50.7	1720	53.3	1760	55.9	1800	58.5	1839	61.2	1877	63.8	1914	66.5	1951	69.2
CFM	OV FPM	22' SP		24' SP		26' SP		28' SP		30' SP		32' SP		34' SP		36' SP		38' SP		40' SP	
		RPM	BHP	RPM	BHP	RPM	BHP	RPM	BHP	RPM	BHP	RPM	BHP	RPM	BHP	RPM	BHP	RPM	BHP	RPM	BHP
5910	3000	1847	31.1																		
6304	3200	1853	33.1	1931	36.1	2006	39.2														
6698	3400	1860	35.2	1938	38.4	2012	41.6	2084	44.8	2153	48.0										
7092	3600	1868	37.4	1945	40.7	2019	44.1	2091	47.4	2160	50.8	2227	54.2	2292	57.6						
7486	3800	1875	39.5	1952	43.0	2026	46.6	2098	50.1	2167	53.6	2233	57.2	2298	60.8	2361	64.4				
7880	4000	1884	41.7	1960	45.4	2034	49.1	2105	52.8	2174	56.5	2240	60.2	2305	64.0	2368	67.7	2429	71.5	2489	75.3
8274	4200	1892	44.0	1968	47.8	2042	51.7	2112	55.5	2181	59.4	2247	63.3	2312	67.2	2375	71.2	2436	75.1	2495	79.0
8668	4400	1901	46.3	1977	50.3	2050	54.3	2120	58.3	2189	62.4	2255	66.4	2319	70.5	2382	74.6	2443	78.7	2502	82.8
9062	4600	1911	48.7	1986	52.8	2058	57.0	2129	61.2	2197	65.4	2263	69.6	2327	73.8	2389	78.1	2450	82.4	2509	86.6
9456	4800	1921	51.1	1995	55.4	2067	59.7	2137	64.1	2205	68.4	2271	72.8	2334	77.2	2397	81.6	2457	86.1	2516	90.5
9850	5000	1931	53.7	2005	58.1	2077	62.5	2146	67.0	2214	71.6	2279	76.1	2343	80.7	2405	85.2	2465	89.8	2524	94.4
10244	5200	1942	56.3	2016	60.8	2087	65.4	2156	70.1	2223	74.7	2288	79.4	2351							

ICF Performance

Size 21 LS/WF

Wheel Diameter **36-1/2"**
 Inlet Diameter **21"**
 Outlet Area **2.41 sq. ft.**

Wheel
 Shaft

RPM Limits @70F

C/2	C/3HD	C/3	C/4HD	C/4	WF
1939	1939	1939	2503	2503	1620
1660	1660	1940	2290	2500	1759

CFM	OV FPM	1' SP		2' SP		3' SP		4' SP		5' SP		6' SP		7' SP		8' SP		9' SP		10' SP	
		RPM	BHP	RPM	BHP	RPM	BHP	RPM	BHP	RPM	BHP	RPM	BHP	RPM	BHP	RPM	BHP	RPM	BHP	RPM	BHP
2892	1200	379	.7	513	1.4	619	2.1														
3374	1400	392	.9	521	1.6	626	2.4	716	3.2	795	4.0										
3856	1600	407	1.1	531	1.9	634	2.8	722	3.7	801	4.6	873	5.5								
4338	1800	423	1.4	543	2.3	643	3.2	730	4.2	808	5.2	879	6.2	945	7.3	1007	8.3				
4820	2000	441	1.6	556	2.6	653	3.7	738	4.7	815	5.8	886	6.9	951	8.1	1013	9.2	1070	10.4	1125	11.5
5302	2200	460	2.0	571	3.0	665	4.1	748	5.3	824	6.5	894	7.7	958	8.9	1019	10.2	1077	11.4	1131	12.7
5784	2400	480	2.3	586	3.5	678	4.7	759	5.9	833	7.2	902	8.5	966	9.8	1026	11.1	1083	12.5	1138	13.8
6266	2600	501	2.7	603	4.0	692	5.3	771	6.6	844	7.9	911	9.3	975	10.7	1034	12.1	1091	13.6	1145	15.1
6748	2800	522	3.1	621	4.5	707	5.9	784	7.3	856	8.7	922	10.2	984	11.7	1043	13.2	1099	14.7	1152	16.3
7230	3000	544	3.6	640	5.2	723	6.6	799	8.1	868	9.6	933	11.2	994	12.7	1052	14.3	1107	15.9	1160	17.6
7712	3200	567	4.2	660	5.8	740	7.4	814	8.9	882	10.6	946	12.2	1005	13.8	1062	15.5	1117	17.2	1169	18.9
8194	3400	590	4.8	680	6.5	758	8.2	829	9.9	896	11.6	959	13.3	1018	15.0	1074	16.8	1127	18.5	1179	20.3
8676	3600	614	5.6	700	7.3	777	9.1	846	10.8	911	12.6	973	14.5	1031	16.3	1086	18.1	1138	19.9	1189	21.8
9158	3800	638	6.3	721	8.2	796	10.1	864	11.9	927	13.8	987	15.7	1044	17.6	1099	19.5	1150	21.5	1200	23.4
9640	4000	663	7.2	743	9.1	816	11.1	882	13.1	944	15.0	1003	17.0	1059	19.0	1112	21.0	1163	23.1	1212	25.1
10122	4200	688	8.1	765	10.1	836	12.2	901	14.3	961	16.3	1019	18.4	1074	20.5	1126	22.6	1177	24.7	1225	26.9
10604	4400	713	9.2	787	11.2	857	13.4	920	15.6	980	17.7	1036	19.8	1089	22.0	1141	24.2	1191	26.5	1238	28.7
11086	4600	738	10.3	810	12.4	877	14.7	940	17.0	998	19.2	1053	21.4	1106	23.7	1156	26.0	1205	28.3	1252	30.6
11568	4800	764	11.5	833	13.7	899	16.0	960	18.4	1017	20.8	1071	23.1	1123	25.4	1172	27.8	1220	30.2	1267	32.6
12050	5000	790	12.8	857	15.0	921	17.4	981	20.0	1037	22.5	1090	24.9	1140	27.3	1189	29.7	1236	32.2	1282	34.7
12532	5200	816	14.2	881	16.5	943	19.0	1001	21.6	1057	24.3	1109	26.8	1159	29.3	1206	31.8	1252	34.3	1297	36.9
13014	5400	842	15.7	905	18.1	965	20.6	1023	23.3	1077	26.1	1128	28.8	1177	31.4	1224	34.0	1269	36.6	1313	39.2
13496	5600	869	17.4	930	19.8	988	22.4	1044	25.2	1097	28.0	1148	30.9	1196	33.6	1242	36.3	1287	38.9	1330	41.7
13978	5800	895	19.1	955	21.7	1011	24.3	1066	27.1	1118	30.1	1168	33.0	1216	35.9	1261	38.7	1305	41.4	1347	44.2
5302	2200	1183	13.9	1233	15.2																
5784	2400	1189	15.2	1239	16.6	1286	18.0	1332	19.3	1376	20.7										
6266	2600	1196	16.5	1245	18.0	1293	19.5	1338	21.0	1382	22.4	1425	23.9	1467	25.4						
6748	2800	1203	17.9	1252	19.4	1299	21.0	1345	22.6	1389	24.2	1431	25.8	1473	27.4	1513	29.0	1552	30.6	1590	32.2
7230	3000	1211	19.2	1259	20.9	1306	22.6	1351	24.3	1395	26.0	1438	27.7	1479	29.4	1519	31.1	1558	32.8	1596	34.5
7712	3200	1219	20.7	1267	22.4	1314	24.2	1359	26.0	1402	27.8	1445	29.6	1486	31.4	1526	33.2	1564	35.0	1602	36.9
8194	3400	1228	22.2	1276	24.0	1322	25.9	1367	27.8	1410	29.7	1452	31.6	1493	33.5	1532	35.4	1571	37.3	1609	39.2
8676	3600	1238	23.7	1285	25.7	1331	27.6	1375	29.6	1418	31.6	1460	33.6	1500	35.6	1540	37.6	1578	39.6	1616	41.6
9158	3800	1248	25.4	1295	27.4	1340	29.4	1384	31.5	1426	33.5	1468	35.6	1508	37.7	1547	39.8	1586	42.0	1623	44.1
9640	4000	1260	27.1	1306	29.2	1350	31.3	1393	33.4	1436	35.6	1477	37.8	1517	40.0	1556	42.2	1594	44.4	1631	46.6
10122	4200	1272	29.0	1317	31.1	1361	33.3	1404	35.5	1445	37.7	1486	40.0	1526	42.3	1564	44.5	1602	46.8	1639	49.2
10604	4400	1285	30.9	1329	33.2	1373	35.4	1415	37.7	1456	40.0	1496	42.3	1535	44.6	1573	47.0	1611	49.4	1648	51.8
11086	4600	1298	33.0	1342	35.3	1385	37.6	1426	40.0	1467	42.3	1507	44.7	1545	47.1	1583	49.6	1620	52.1	1657	54.5
11568	4800	1312	35.1	1355	37.5	1398	39.9	1439	42.4	1479	44.8	1518	47.3	1556	49.8	1594	52.3	1630	54.8	1666	57.4
12050	5000	1326	37.3	1369	39.8	1411	42.4	1452	44.9	1491	47.4	1530	49.9	1568	52.5	1605	55.1	1641	57.7	1677	60.3
12532	5200	1341	39.6	1383	42.2	1425	44.8	1465	47.5	1504	50.1	1542	52.7	1580	55.4	1616	58.0	1652	60.7	1688	63.4
13014	5400	1356	41.9	1398	44.7	1439	47.4	1479	50.2	1518	52.9	1555	55.6	1592	58.4	1629	61.1	1664	63.9	1699	66.6
13496	5600	1372	44.4	1414	47.3	1454	50.1	1493	52.9	1531	55.8	1569	58.6	1606	61.5	1641	64.3	1677	67.1	1711	70.0
13978	5800	1389	47.1	1429	50.0	1469	52.9	1508	55.8	1546	58.8	1583	61.7	1619	64.7	1655	67.6	1689	70.5	1724	73.5
14460	6000	1406	49.8	1446	52.8	1485	55.8	1523	58.8	1561	61.8	1597	64.9	1633	68.0	1668	71.0	1703	74.0	1737	77.1
14942	6200	1423	52.8	1463	55.8	1501	58.8	1539	61.9	1576	65.0	1612	68.2	1647	71.3	1682	74.5	1716	77.6	1750	80.8
15424	6400	1441	55.8	1480	58.9	1518	62.0	1555	65.2	1591	68.4	1627	71.6	1662	74.8	1697	78.1	1731	81.4	1764	84.6
7230	3000	1670	38.0																		
7712	3200	1676	40.5	1746	44.2	1813	47.9														
8194	3400	1682	43.1	1752	47.0	1819	50.9	1884	54.8	1947	58.7										
8676	3600	1689	45.7	1758	49.8	1825	53.9	1890	58.0	1953	62.2	2013	66.3	2072	70.5						
9158	3800	1696	48.4	1765	52.6	1832	57.0	1896	61.3	1959	65.6	2019	70.0	2078	74.4	2135	78.8				
9640	4000	1703	51.1	1772	55.6	1839	60.1	1903	64.6	1965	69.1	2025	73.7	2084	78.3	2141	82.9	2196	87.5	2250	92.1
10122	4200	1711	53.8	1779	58.5	1846	63.2	1910	68.0	1972	72.7	2032	77.5	2090	82.2	2147	87.0	2202	91.9	2256	96.7
10604	4400	1719	56.6	1787	61.5	1853	66.4	1917	71.4	1979	76.3	2039	81.3	2097	86.3	2153	91.3	2208	96.3	2262	101.3
11086	4600	1727	59.6	1795	64.6	1861	69.7	1924	74.8	1986	80.0	2046	85.2	2104	90.3	2160	95.5	2215	100.8	2269	106.0
11568	4800	1736	62.5	1804	67.8	1869	73.1	1932	78.4	1993	83.7	2053	89.1	2111	94.5	2167	99.9	2222	105.3	2275	110.7
12050	5000	1746	65.6	1813	71.0	1878	76.5	1941	82.0	2001	87.5	2061	93.1	2118	98.7	2174	104.3	2229	109.9	2282	115.5
12532	5200	1756	68.9	1823	74.4	1887	80.0	1949	85.7	2010	91.4	2068	97.2	2126	103.0	2182	108.8	2236	114.6	2289	120.4
13014	5400	1767	72.2	1833	77.9	1896	83.7	1958	89.5	2018	95.4	2077	101.3	2134	107.3	2189	113.3	2243	119.3	2296	125.3
13496	5600	1778	75.7	1843	81.5	1906	87.4	1968	93.4	2027	99.5	2086	105.6	2142	111.7	2197	117.9	2251	124.1	2304	130.4
13978	5800	1790	79.4	1854	85.3	191															

ICF Performance

Size 23 LS

Wheel Diameter 40"
Inlet Diameter 23"
Outlet Area 2.89 sq. ft.

Wheel
Shaft

RPM Limits @70F

C/2	C/3HD	C/3	C/4HD	C/4
1794	1794	1794	2313	2313
1510	1510	1733	2075	2200

CFM	OV FPM	1' SP		2' SP		3' SP		4' SP		5' SP		6' SP		7' SP		8' SP		9' SP		10' SP	
		RPM	BHP	RPM	BHP	RPM	BHP	RPM	BHP	RPM	BHP	RPM	BHP	RPM	BHP	RPM	BHP	RPM	BHP	RPM	BHP
3468	1200	343	.9	462	1.7	559	2.5														
4046	1400	355	1.1	471	2.0	564	2.9	646	3.9												
4624	1600	368	1.3	480	2.3	571	3.4	651	4.4	723	5.5										
5202	1800	383	1.6	491	2.7	580	3.9	658	5.0	728	6.2	793	7.5								
5780	2000	400	1.9	503	3.2	591	4.4	666	5.7	735	7.0	798	8.3	858	9.7	914	11.1				
6358	2200	417	2.3	516	3.6	601	5.0	676	6.4	743	7.8	806	9.2	864	10.7	919	12.2	971	13.7	1021	15.2
6936	2400	435	2.7	531	4.1	613	5.7	687	7.2	753	8.7	814	10.2	871	11.7	925	13.3	976	14.9	1026	16.6
7514	2600	454	3.2	546	4.7	626	6.3	698	8.0	763	9.6	824	11.2	880	12.9	933	14.6	983	16.3	1031	18.0
8092	2800	474	3.7	563	5.3	640	7.0	710	8.9	774	10.6	834	12.4	889	14.1	941	15.9	991	17.7	1038	19.5
8670	3000	494	4.4	580	6.1	655	7.8	723	9.7	786	11.7	844	13.6	899	15.4	951	17.3	1000	19.2	1047	21.1
9248	3200	515	5.0	598	6.9	670	8.7	736	10.7	798	12.8	856	14.8	910	16.8	961	18.8	1009	20.8	1056	22.8
9826	3400	537	5.8	616	7.7	687	9.7	751	11.7	811	13.9	868	16.1	921	18.2	972	20.4	1020	22.5	1065	24.6
10404	3600	559	6.6	635	8.7	704	10.7	766	12.8	825	15.1	880	17.4	933	19.7	983	22.0	1030	24.2	1076	26.5
10982	3800	581	7.5	654	9.7	721	11.9	782	14.0	839	16.3	894	18.8	945	21.2	994	23.7	1041	26.1	1086	28.4
11560	4000	603	8.5	674	10.8	740	13.1	799	15.4	855	17.7	908	20.2	958	22.8	1006	25.4	1053	27.9	1097	30.5
12138	4200	626	9.6	695	12.0	758	14.4	816	16.8	871	19.2	922	21.8	972	24.4	1019	27.2	1065	29.9	1109	32.6
12716	4400	649	10.8	716	13.3	777	15.9	834	18.4	887	20.9	938	23.5	986	26.2	1033	29.0	1077	31.9	1121	34.7
13294	4600	673	12.1	737	14.8	796	17.4	852	20.0	905	22.6	954	25.3	1001	28.1	1047	30.9	1091	33.9	1133	36.9
13872	4800	696	13.5	758	16.3	816	19.0	871	21.8	922	24.5	970	27.2	1017	30.1	1061	33.0	1105	36.0	1146	39.2
14450	5000	720	15.1	780	17.9	836	20.8	889	23.6	940	26.5	987	29.3	1033	32.2	1077	35.2	1119	38.3	1160	41.5
15028	5200	743	16.7	802	19.7	857	22.6	909	25.6	958	28.6	1005	31.5	1050	34.5	1092	37.6	1134	40.7	1174	44.0
15606	5400	767	18.4	825	21.6	878	24.6	928	27.7	976	30.8	1023	33.9	1067	36.9	1109	40.1	1149	43.3	1189	46.6
16184	5600	791	20.3	847	23.6	899	26.8	948	29.9	995	33.1	1041	36.3	1084	39.5	1125	42.7	1166	46.0	1204	49.3
16762	5800	815	22.3	870	25.7	920	29.0	968	32.3	1014	35.6	1059	38.9	1102	42.2	1143	45.5	1182	48.9	1220	52.3
CFM	OV FPM	11' SP		12' SP		13' SP		14' SP		15' SP		16' SP		17' SP		18' SP		19' SP		20' SP	
		RPM	BHP	RPM	BHP	RPM	BHP	RPM	BHP	RPM	BHP	RPM	BHP	RPM	BHP	RPM	BHP	RPM	BHP	RPM	BHP
6936	2400	1073	18.2	1118	19.9																
7514	2600	1078	19.8	1123	21.5	1166	23.3	1208	25.2												
8092	2800	1084	21.4	1128	23.2	1171	25.1	1213	27.1	1253	29.0	1292	31.0								
8670	3000	1092	23.1	1135	25.0	1177	27.0	1218	29.0	1258	31.1	1296	33.1	1334	35.2	1371	37.3	1407	39.4		
9248	3200	1100	24.8	1143	26.9	1184	29.0	1225	31.1	1264	33.2	1302	35.4	1339	37.6	1375	39.8	1411	42.0	1446	44.2
9826	3400	1109	26.7	1151	28.9	1192	31.1	1232	33.3	1271	35.5	1308	37.7	1345	40.0	1381	42.3	1416	44.6	1451	46.9
10404	3600	1119	28.7	1161	31.0	1201	33.3	1240	35.6	1279	37.9	1316	40.2	1352	42.6	1387	44.9	1422	47.3	1456	49.8
10982	3800	1129	30.8	1171	33.2	1211	35.5	1250	37.9	1287	40.4	1324	42.8	1360	45.2	1395	47.7	1429	50.2	1463	52.7
11560	4000	1140	33.0	1181	35.4	1221	37.9	1259	40.4	1297	43.0	1333	45.5	1368	48.0	1403	50.6	1437	53.2	1470	55.8
12138	4200	1151	35.2	1192	37.8	1231	40.4	1269	43.1	1307	45.7	1343	48.3	1378	51.0	1412	53.6	1445	56.3	1478	59.0
12716	4400	1162	37.5	1203	40.3	1242	43.0	1280	45.8	1317	48.5	1353	51.2	1387	54.0	1421	56.8	1454	59.5	1487	62.3
13294	4600	1174	39.9	1214	42.8	1253	45.7	1291	48.6	1327	51.4	1363	54.3	1397	57.2	1431	60.0	1464	62.9	1496	65.8
13872	4800	1187	42.3	1226	45.4	1265	48.4	1302	51.4	1338	54.4	1374	57.4	1408	60.4	1441	63.4	1474	66.4	1506	69.4
14450	5000	1200	44.7	1239	48.0	1277	51.2	1314	54.4	1349	57.5	1384	60.7	1419	63.8	1452	66.9	1484	70.0	1516	73.1
15028	5200	1214	47.3	1252	50.7	1289	54.0	1326	57.4	1361	60.7	1396	64.0	1430	67.3	1463	70.5	1495	73.7	1527	77.0
15606	5400	1228	50.0	1265	53.4	1302	57.0	1338	60.5	1373	63.9	1408	67.4	1441	70.8	1474	74.2	1506	77.6	1537	80.9
16184	5600	1242	52.8	1279	56.3	1316	60.0	1351	63.6	1386	67.2	1420	70.8	1453	74.4	1485	78.0	1517	81.5	1548	85.0
16762	5800	1258	55.8	1294	59.4	1330	63.1	1365	66.8	1399	70.6	1432	74.3	1465	78.1	1497	81.8	1529	85.5	1560	89.1
17340	6000	1273	59.0	1309	62.6	1344	66.3	1379	70.2	1412	74.0	1445	77.9	1478	81.8	1510	85.7	1541	89.6	1571	93.4
17918	6200	1289	62.3	1325	66.0	1359	69.8	1393	73.7	1426	77.6	1459	81.6	1491	85.6	1522	89.7	1553	93.7	1583	97.7
18496	6400	1306	65.8	1340	69.6	1374	73.4	1408	77.3	1440	81.4	1473	85.4	1504	89.6	1535	93.7	1566	97.9	1596	102.0
CFM	OV FPM	22' SP		24' SP		26' SP		28' SP		30' SP		32' SP		34' SP		36' SP		38' SP		40' SP	
		RPM	BHP	RPM	BHP	RPM	BHP	RPM	BHP	RPM	BHP	RPM	BHP	RPM	BHP	RPM	BHP	RPM	BHP	RPM	BHP
9248	3200	1513	48.7																		
9826	3400	1517	51.7	1581	56.4																
10404	3600	1522	54.7	1586	59.7	1647	64.7	1707	69.8												
10982	3800	1528	57.8	1591	63.0	1652	68.2	1711	73.5	1768	78.9										
11560	4000	1535	61.1	1597	66.4	1657	71.8	1716	77.3	1773	82.9	1828	88.5	1881	94.1						
12138	4200	1542	64.5	1604	70.0	1663	75.6	1721	81.3	1778	87.0	1832	92.8	1886	98.6	1938	104.5	1988	110.5		
12716	4400	1550	68.0	1611	73.7	1670	79.5	1727	85.3	1783	91.2	1838	97.2	1890	103.3	1942	109.4	1993	115.5	2042	121.7
13294	4600	1559	71.6	1619	77.5	1678	83.5	1734	89.5	1790	95.6	1843	101.8	1896	108.0	1947	114.3	1997	120.7	2046	127.1
13872	4800	1568	75.5	1628	81.5	1686	87.7	1742	93.9	1797	100.2	1850	106.5	1902	112.9	1953	119.4	2003	126.0	2051	132.5
14450	5000	1578	79.4	1637	85.7	1695	92.0	1750	98.4	1804	104.9	1857	111.4	1909	118.0	1959	124.7	2008	131.4	2057	138.2
15028	5200	1588	83.5	1647	90.0	1704	96.5	1759	103.1	1813	109.8	1865	116.5	1916	123.3	1966	130.1	2015	137.0	2063	143.9
15606	5400	1598	87.7	1657	94.4	1714	101.2	1768	108.0	1822	114.8	1874	121.7	1924	128.7	1974	135.7	2022	142.8	2070	149.9
16184	5600	1609	92.0	1667	98.9	1724	105.9	1778	113.0	1831	120.0	1882	127.1	1933	134.3	1982	141.5	2030	148.7	2077	156.0
16762	5800	1620	96.4	1678	103.6	1734	110.8	1													

ICF Performance

Size 26 LS

Wheel Diameter **45-1/8"**
 Inlet Diameter **26"**
 Outlet Area **3.69 sq. ft.**

RPM Limits @70F

	C/2	C/3HD	C/3	C/4
Wheel	1549	1549	1549	2094
Shaft	1408	1408	1550	1900

CFM	OV FPM	1' SP		2' SP		3' SP		4' SP		5' SP		6' SP		7' SP		8' SP		9' SP		10' SP	
		RPM	BHP	RPM	BHP	RPM	BHP	RPM	BHP	RPM	BHP	RPM	BHP	RPM	BHP	RPM	BHP	RPM	BHP	RPM	BHP
4428	1200	304	1.1	410	2.1	496	3.2														
5166	1400	315	1.4	417	2.5	500	3.7	573	4.9												
5904	1600	327	1.7	426	3.0	507	4.3	577	5.6	641	7.1										
6642	1800	340	2.0	436	3.5	515	4.9	583	6.4	646	7.9	703	9.5								
7380	2000	355	2.5	446	4.1	524	5.7	591	7.3	652	8.9	708	10.6	761	12.3	810	14.1				
8118	2200	370	2.9	458	4.6	533	6.4	600	8.2	659	10.0	714	11.8	766	13.6	815	15.5	861	17.5	905	19.4
8856	2400	386	3.5	471	5.3	544	7.2	609	9.2	668	11.1	722	13.0	772	15.0	820	17.0	866	19.1	909	21.1
9594	2600	403	4.1	485	6.0	555	8.1	619	10.2	677	12.3	730	14.4	780	16.5	827	18.6	872	20.8	914	23.0
10332	2800	421	4.8	499	6.8	567	9.0	630	11.3	687	13.6	739	15.8	788	18.0	835	20.3	879	22.6	921	24.9
11070	3000	439	5.6	515	7.8	581	10.0	641	12.4	697	14.9	749	17.3	797	19.7	843	22.1	886	24.5	928	27.0
11808	3200	458	6.4	530	8.8	595	11.1	653	13.6	708	16.3	759	18.9	807	21.5	852	24.0	895	26.6	936	29.1
12546	3400	477	7.4	547	9.9	609	12.4	666	15.0	719	17.7	769	20.5	817	23.3	862	26.0	904	28.7	945	31.4
13284	3600	496	8.5	564	11.1	625	13.7	680	16.4	732	19.2	781	22.2	827	25.2	871	28.1	913	31.0	954	33.8
14022	3800	516	9.6	581	12.4	640	15.2	694	18.0	745	20.9	793	24.0	838	27.1	882	30.2	923	33.3	963	36.3
14760	4000	536	10.9	599	13.8	656	16.8	709	19.7	758	22.7	805	25.8	850	29.1	893	32.4	934	35.7	973	38.9
15498	4200	556	12.3	617	15.4	673	18.5	724	21.5	773	24.6	818	27.8	862	31.2	904	34.7	944	38.2	983	41.6
16236	4400	577	13.9	635	17.1	689	20.3	740	23.5	787	26.7	832	30.0	875	33.5	916	37.1	956	40.7	994	44.3
16974	4600	597	15.5	654	18.9	707	22.2	756	25.6	803	28.9	846	32.3	888	35.9	928	39.5	967	43.3	1005	47.1
17712	4800	618	17.3	673	20.9	724	24.3	773	27.8	818	31.3	861	34.8	902	38.4	941	42.2	980	46.1	1017	50.0
18450	5000	639	19.3	693	23.0	742	26.6	789	30.2	834	33.9	876	37.5	916	41.2	955	45.0	993	48.9	1029	53.0
19188	5200	660	21.4	712	25.2	760	29.0	806	32.8	850	36.6	892	40.3	931	44.1	969	48.0	1006	52.0	1042	56.2
19926	5400	681	23.6	732	27.6	779	31.5	824	35.5	867	39.4	907	43.3	946	47.2	984	51.2	1020	55.3	1055	59.5
20664	5600	703	26.0	752	30.2	798	34.2	841	38.3	883	42.4	923	46.5	962	50.5	999	54.6	1034	58.8	1068	63.1
21402	5800	724	28.6	772	32.9	817	37.1	859	41.4	900	45.6	940	49.8	978	54.0	1014	58.2	1049	62.5	1083	66.8
CFM	OV FPM	11' SP		12' SP		13' SP		14' SP		15' SP		16' SP		17' SP		18' SP		19' SP		20' SP	
		RPM	BHP	RPM	BHP	RPM	BHP	RPM	BHP	RPM	BHP	RPM	BHP	RPM	BHP	RPM	BHP	RPM	BHP	RPM	BHP
8856	2400	951	23.3	991	25.4																
9594	2600	956	25.2	995	27.5	1034	29.8	1071	32.1												
10332	2800	961	27.3	1000	29.7	1038	32.1	1075	34.5	1111	37.0	1145	39.5								
11070	3000	968	29.4	1006	31.9	1044	34.5	1080	37.1	1115	39.7	1149	42.3	1183	45.0	1215	47.6	1247	50.3		
11808	3200	975	31.7	1013	34.4	1050	37.0	1086	39.7	1120	42.4	1154	45.2	1187	48.0	1219	50.8	1251	53.6	1282	56.4
12546	3400	983	34.1	1021	36.9	1057	39.7	1092	42.5	1127	45.3	1160	48.2	1192	51.1	1224	54.0	1255	57.0	1286	59.9
13284	3600	992	36.7	1029	39.6	1065	42.5	1100	45.4	1134	48.4	1167	51.3	1199	54.4	1230	57.4	1261	60.5	1291	63.5
14022	3800	1001	39.3	1038	42.4	1074	45.4	1108	48.5	1141	51.5	1174	54.7	1206	57.8	1237	60.9	1267	64.1	1297	67.3
14760	4000	1011	42.1	1047	45.3	1083	48.5	1117	51.7	1150	54.9	1182	58.1	1213	61.4	1244	64.6	1274	67.9	1303	71.3
15498	4200	1021	45.0	1057	48.3	1092	51.7	1126	55.0	1159	58.3	1190	61.7	1221	65.1	1252	68.5	1282	71.9	1311	75.4
16236	4400	1031	47.9	1067	51.5	1101	55.0	1135	58.5	1168	62.0	1199	65.5	1230	69.0	1260	72.5	1290	76.1	1318	79.6
16974	4600	1042	50.9	1077	54.7	1111	58.4	1145	62.0	1177	65.7	1209	69.4	1239	73.0	1269	76.7	1298	80.4	1327	84.1
17712	4800	1053	54.0	1088	58.0	1122	61.9	1155	65.7	1187	69.6	1218	73.4	1248	77.2	1278	81.0	1307	84.8	1336	88.7
18450	5000	1064	57.2	1099	61.3	1132	65.4	1165	69.5	1197	73.5	1228	77.5	1258	81.5	1288	85.5	1316	89.4	1345	93.4
19188	5200	1076	60.4	1110	64.7	1143	69.0	1176	73.3	1207	77.6	1238	81.8	1268	85.9	1297	90.1	1326	94.2	1354	98.3
19926	5400	1089	63.9	1122	68.3	1155	72.8	1187	77.2	1218	81.7	1248	86.1	1278	90.5	1307	94.8	1335	99.1	1363	103.4
20664	5600	1102	67.5	1135	72.0	1167	76.6	1198	81.2	1229	85.9	1259	90.5	1288	95.1	1317	99.6	1345	104.1	1373	108.6
21402	5800	1116	71.3	1148	75.9	1179	80.6	1210	85.4	1241	90.2	1270	95.0	1299	99.8	1328	104.5	1356	109.2	1383	113.9
22140	6000	1130	75.4	1161	80.0	1192	84.8	1223	89.7	1253	94.6	1282	99.6	1311	104.5	1339	109.5	1366	114.4	1394	119.3
22878	6200	1144	79.7	1175	84.4	1206	89.2	1236	94.1	1265	99.2	1294	104.3	1322	109.4	1350	114.6	1377	119.7	1404	124.8
23616	6400	1158	84.2	1189	89.0	1219	93.8	1249	98.8	1278	104.0	1306	109.2	1334	114.4	1362	119.7	1389	125.1	1415	130.4
CFM	OV FPM	22' SP		24' SP		26' SP		28' SP		30' SP		32' SP		34' SP		36' SP		38' SP		40' SP	
		RPM	BHP	RPM	BHP	RPM	BHP	RPM	BHP	RPM	BHP	RPM	BHP	RPM	BHP	RPM	BHP	RPM	BHP	RPM	BHP
11808	3200	1341	62.2																		
12546	3400	1345	65.9	1402	72.0																
13284	3600	1350	69.8	1406	76.1	1460	82.6	1513	89.1												
14022	3800	1355	73.8	1411	80.4	1464	87.1	1517	93.8	1567	100.7										
14760	4000	1361	78.0	1416	84.8	1469	91.7	1521	98.7	1571	105.8	1620	112.9	1668	120.1						
15498	4200	1367	82.3	1422	89.4	1475	96.5	1526	103.7	1576	111.0	1624	118.4	1672	125.9	1718	133.4	1763	141.0		
16236	4400	1374	86.8	1428	94.1	1481	101.5	1531	108.9	1581	116.5	1629	124.1	1676	131.8	1722	139.6	1766	147.5	1810	155.4
16974	4600	1382	91.5	1436	99.0	1487	106.6	1538	114.3	1587	122.1	1634	130.0	1681	137.9	1726	145.9	1771	154.0	1814	162.2
17712	4800	1391	96.4	1444	104.2	1495	112.0	1545	119.9	1593	127.9	1640	136.0	1686	144.2	1731	152.5	1775	160.8	1818	169.2
18450	5000	1399	101.4	1452	109.4	1503	117.5	1552	125.7	1600	134.0	1647	142.3	1692	150.7	1737	159.2	1781	167.7	1823	176.4
19188	5200	1408	106.6	1460	114.9	1511	123.3	1560	131.7	1607	140.2	1654	148.8	1699	157.4	1743	166.1	1786	174.9	1829	183.8
19926	5400	1417	112.0	1469	120.6	1520	129.2	1568	137.9	1615	146.6	1661	155.5	1706	164.3	1750	173.3	1793	182.3	1835	191.4
20664	5600	1427	117.5	1479	126.4	1528	135.3	1577	144.3	1624	153.3	1669	162.4	1714	171.5	1757	180.7	1800	189.9	1841	199.3
21402	5800	1437	123.2	1488	132.4	1538	141.6	1586													

ICF Performance

Size 29 LS

Wheel Diameter **50-1/2"**
 Inlet Diameter **29"**
 Outlet Area **4.59 sq. ft.**

RPM Limits @70F

	C/2	C/3HD	C/3	C/4
Wheel	1421	1421	1421	1786
Shaft	1153	1153	1422	1786

CFM	OV FPM	1' SP		2' SP		3' SP		4' SP		5' SP		6' SP		7' SP		8' SP		9' SP		10' SP	
		RPM	BHP	RPM	BHP	RPM	BHP	RPM	BHP	RPM	BHP	RPM	BHP	RPM	BHP	RPM	BHP	RPM	BHP	RPM	BHP
5508	1200	272	1.4	366	2.6	443	4.0														
6426	1400	281	1.8	373	3.2	447	4.6	512	6.2												
7344	1600	291	2.1	380	3.7	452	5.3	516	7.0	573	8.8										
8262	1800	303	2.5	389	4.4	460	6.1	521	8.0	577	9.9	628	11.8								
9180	2000	316	3.0	398	5.0	468	7.0	528	9.0	582	11.1	632	13.2	679	15.4	724	17.6				
10098	2200	330	3.6	409	5.8	476	8.0	535	10.2	589	12.4	638	14.6	684	16.9	728	19.3	769	21.7	809	24.2
11016	2400	344	4.3	420	6.5	485	9.0	544	11.4	596	13.8	645	16.2	690	18.6	733	21.2	773	23.7	812	26.3
11934	2600	359	5.1	432	7.4	496	10.1	553	12.7	604	15.3	652	17.9	696	20.5	738	23.1	778	25.8	817	28.6
12852	2800	375	5.9	445	8.5	506	11.2	562	14.1	613	16.9	660	19.6	704	22.4	745	25.2	785	28.1	822	31.0
13770	3000	391	6.9	459	9.6	518	12.4	572	15.5	622	18.5	669	21.5	712	24.5	753	27.5	792	30.5	829	33.5
14688	3200	408	8.0	473	10.9	530	13.8	583	17.0	632	20.2	677	23.5	720	26.7	761	29.8	799	33.0	836	36.2
15606	3400	425	9.2	487	12.2	543	15.3	594	18.6	642	22.0	687	25.5	729	28.9	769	32.3	807	35.7	844	39.0
16524	3600	442	10.5	502	13.7	557	17.0	606	20.3	653	23.9	697	27.6	738	31.3	778	34.9	816	38.5	852	42.0
17442	3800	459	11.9	518	15.4	571	18.8	619	22.3	664	25.9	707	29.8	748	33.7	787	37.6	824	41.4	860	45.1
18360	4000	477	13.5	533	17.1	585	20.8	632	24.4	677	28.1	718	32.1	758	36.2	797	40.3	833	44.4	869	48.4
19278	4200	495	15.3	550	19.1	600	22.9	646	26.7	689	30.5	730	34.6	769	38.8	807	43.1	843	47.4	878	51.7
20196	4400	513	17.1	566	21.1	615	25.1	660	29.1	702	33.1	742	37.2	780	41.6	817	46.0	853	50.6	887	55.1
21114	4600	532	19.2	583	23.4	630	27.5	674	31.7	716	35.9	755	40.1	792	44.5	828	49.1	863	53.8	897	58.6
22032	4800	550	21.4	600	25.8	645	30.1	689	34.5	730	38.8	768	43.2	805	47.7	840	52.4	874	57.2	907	62.1
22950	5000	569	23.8	617	28.4	661	32.9	704	37.4	744	42.0	781	46.5	817	51.1	852	55.8	886	60.8	918	65.9
23868	5200	588	26.4	634	31.2	678	35.9	719	40.6	758	45.3	795	50.0	831	54.7	865	59.6	897	64.6	929	69.8
24786	5400	607	29.2	652	34.1	694	39.0	734	43.9	773	48.8	809	53.7	844	58.6	877	63.5	910	68.6	941	73.9
25704	5600	626	32.2	670	37.3	711	42.4	750	47.4	787	52.5	823	57.6	858	62.6	891	67.7	922	72.9	953	78.3
26622	5800	645	35.3	688	40.7	728	45.9	766	51.2	803	56.4	838	61.7	872	66.9	904	72.2	935	77.5	966	82.9
CFM	OV FPM	11' SP		12' SP		13' SP		14' SP		15' SP		16' SP		17' SP		18' SP		19' SP		20' SP	
		RPM	BHP	RPM	BHP	RPM	BHP	RPM	BHP	RPM	BHP	RPM	BHP	RPM	BHP	RPM	BHP	RPM	BHP	RPM	BHP
11016	2400	850	29.0	886	31.7																
11934	2600	854	31.4	889	34.2	924	37.1	957	40.0												
12852	2800	859	33.9	894	36.9	927	39.9	960	43.0	992	46.1	1023	49.2								
13770	3000	864	36.6	899	39.7	932	42.9	965	46.1	996	49.4	1027	52.6	1057	56.0	1086	59.3	1114	62.7		
14688	3200	871	39.4	905	42.7	938	46.0	970	49.4	1001	52.8	1031	56.2	1061	59.7	1089	63.2	1118	66.7	1145	70.3
15606	3400	878	42.4	912	45.9	944	49.3	976	52.8	1006	56.4	1036	59.9	1065	63.5	1094	67.2	1122	70.9	1149	74.6
16524	3600	886	45.6	919	49.2	951	52.8	982	56.5	1013	60.1	1042	63.8	1071	67.6	1099	71.4	1126	75.2	1153	79.1
17442	3800	894	48.9	927	52.6	959	56.4	989	60.2	1019	64.1	1048	67.9	1077	71.8	1105	75.8	1132	79.7	1158	83.7
18360	4000	903	52.3	935	56.3	967	60.2	997	64.2	1027	68.2	1055	72.2	1084	76.3	1111	80.4	1138	84.5	1164	88.6
19278	4200	911	55.9	944	60.0	975	64.2	1005	68.3	1034	72.5	1063	76.7	1091	80.9	1118	85.1	1145	89.4	1171	93.7
20196	4400	920	59.5	952	63.9	983	68.3	1013	72.6	1043	77.0	1071	81.3	1098	85.7	1125	90.1	1152	94.5	1177	99.0
21114	4600	930	63.3	961	67.9	992	72.5	1022	77.1	1051	81.6	1079	86.2	1106	90.7	1133	95.3	1159	99.9	1185	104.5
22032	4800	940	67.1	971	72.0	1001	76.8	1031	81.6	1060	86.4	1087	91.2	1115	95.9	1141	100.6	1167	105.4	1193	110.2
22950	5000	950	71.0	981	76.2	1011	81.3	1040	86.3	1068	91.3	1096	96.3	1123	101.2	1150	106.2	1175	111.1	1201	116.1
23868	5200	961	75.1	991	80.4	1021	85.8	1049	91.1	1078	96.4	1105	101.6	1132	106.7	1158	111.9	1184	117.0	1209	122.2
24786	5400	972	79.3	1002	84.8	1031	90.4	1059	96.0	1087	101.5	1114	107.0	1141	112.4	1167	117.8	1192	123.1	1217	128.5
25704	5600	983	83.8	1013	89.4	1041	95.2	1070	100.9	1097	106.7	1124	112.4	1150	118.1	1176	123.7	1201	129.3	1226	134.9
26622	5800	995	88.5	1024	94.2	1052	100.1	1080	106.0	1107	112.0	1134	118.0	1160	124.0	1185	129.8	1210	135.7	1235	141.5
27540	6000	1008	93.5	1036	99.3	1064	105.3	1091	111.4	1118	117.5	1144	123.7	1170	129.9	1195	136.0	1220	142.1	1244	148.2
28458	6200	1020	98.8	1048	104.7	1076	110.7	1102	116.9	1129	123.2	1155	129.5	1180	135.9	1205	142.3	1230	148.7	1254	155.0
29376	6400	1033	104.4	1061	110.3	1088	116.5	1114	122.7	1140	129.1	1166	135.6	1191	142.2	1215	148.8	1240	155.4	1263	162.0
CFM	OV FPM	22' SP		24' SP		26' SP		28' SP		30' SP		32' SP		34' SP		36' SP		38' SP		40' SP	
		RPM	BHP	RPM	BHP	RPM	BHP	RPM	BHP	RPM	BHP	RPM	BHP	RPM	BHP	RPM	BHP	RPM	BHP	RPM	BHP
14688	3200	1198	77.4																		
15606	3400	1202	82.1	1253	89.7																
16524	3600	1206	86.9	1256	94.8	1305	102.8	1352	110.9												
17442	3800	1210	91.8	1260	100.0	1308	108.4	1355	116.8	1400	125.3										
18360	4000	1215	97.0	1265	105.5	1313	114.1	1359	122.8	1404	131.6	1448	140.6	1490	149.6						
19278	4200	1221	102.4	1270	111.1	1317	120.0	1363	129.1	1408	138.2	1451	147.4	1493	156.7	1535	166.1	1575	175.6		
20196	4400	1228	108.0	1276	117.0	1323	126.2	1368	135.5	1412	144.9	1455	154.5	1497	164.1	1538	173.8	1578	183.5	1617	193.4
21114	4600	1234	113.8	1282	123.1	1329	132.6	1374	142.2	1417	151.9	1460	161.7	1502	171.6	1542	181.6	1582	191.7	1621	201.9
22032	4800	1242	119.8	1289	129.5	1335	139.3	1380	149.1	1423	159.1	1465	169.2	1506	179.4	1547	189.7	1586	200.1	1625	210.6
22950	5000	1249	126.0	1296	136.0	1342	146.1	1386	156.3	1429	166.6	1471	177.0	1512	187.4	1552	198.0	1591	208.7	1629	219.5
23868	5200	1257	132.5	1304	142.8	1349	153.2	1393	163.7	1436	174.3	1477	185.0	1517	195.8	1557	206.6	1596	217.6	1634	228.6
24786	5400	1266	139.1	1312	149.8	1357	160.6	1400	171.4	1443	182.3	1484	193.3	1524	204.3	1563	215.5	1601	226.7	1639	238.1
25704	5600	1274	146.0	1320	157.1	1365	168.2	1408	179.3	1450	190.5	1491	201.8	1530	213.2	1569	224.6	1607	236.2	1645	247.8
26622	5800	1283	153.0	1329	164.5	1373	176														

ICF Performance

Size 33 LS

Wheel Diameter **57-1/2"**
 Inlet Diameter **33"**
 Outlet Area **5.94 sq. ft.**

RPM Limits @70F

	C/2	C/3HD	C/3	C/4
Wheel	1210	1210	1210	1560
Shaft	1057	1057	1193	1560

CFM	OV FPM	1' SP		2' SP		3' SP		4' SP		5' SP		6' SP		7' SP		8' SP		9' SP		10' SP	
		RPM	BHP	RPM	BHP	RPM	BHP	RPM	BHP	RPM	BHP	RPM	BHP	RPM	BHP	RPM	BHP	RPM	BHP	RPM	BHP
7128	1200	239	1.8	322	3.4	389	5.1														
8316	1400	247	2.3	327	4.1	392	6.0	449	8.0												
9504	1600	256	2.7	334	4.8	397	6.9	453	9.1	503	11.4										
10692	1800	266	3.3	342	5.6	404	8.0	458	10.3	506	12.8	552	15.3								
11880	2000	278	3.9	350	6.5	411	9.1	463	11.7	511	14.3	555	17.1	597	19.9	636	22.7				
13068	2200	290	4.7	359	7.4	418	10.3	470	13.2	517	16.0	560	18.9	601	21.9	639	25.0	675	28.1	710	31.3
14256	2400	302	5.6	369	8.5	426	11.6	477	14.7	524	17.8	566	20.9	606	24.1	643	27.4	679	30.7	713	34.1
15444	2600	315	6.6	379	9.6	435	13.0	485	16.4	531	19.8	573	23.1	612	26.5	649	29.9	684	33.4	717	37.0
16632	2800	329	7.7	391	10.9	445	14.5	493	18.2	538	21.8	580	25.4	618	29.0	654	32.6	689	36.3	722	40.1
17820	3000	343	8.9	403	12.4	455	16.1	502	20.0	546	24.0	587	27.8	625	31.7	661	35.5	695	39.4	728	43.4
19008	3200	358	10.3	415	14.0	466	17.8	512	21.9	555	26.2	595	30.4	633	34.5	668	38.6	702	42.7	734	46.8
20196	3400	373	11.8	428	15.8	477	19.8	522	24.0	564	28.5	603	33.0	640	37.4	675	41.8	709	46.1	741	50.5
21384	3600	388	13.5	441	17.7	489	22.0	532	26.3	573	30.9	612	35.7	648	40.5	683	45.1	716	49.8	748	54.4
22572	3800	403	15.4	454	19.9	501	24.3	544	28.8	583	33.5	621	38.5	657	43.6	691	48.6	724	53.5	755	58.4
23760	4000	419	17.5	468	22.6	514	26.8	555	31.5	594	36.4	631	41.5	666	46.8	700	52.1	732	57.4	763	62.6
24948	4200	434	19.7	482	24.6	526	29.6	567	34.5	605	39.5	641	44.7	675	50.2	708	55.8	740	61.4	771	66.9
26136	4400	450	22.2	497	27.3	539	32.5	579	37.6	616	42.8	652	48.1	685	53.8	718	59.6	749	65.4	779	71.3
27324	4600	467	24.8	511	30.2	553	35.6	592	41.0	628	46.4	663	51.9	696	57.6	727	63.5	758	69.6	788	75.8
28512	4800	483	27.7	526	33.3	566	39.0	605	44.6	640	50.2	674	55.9	706	61.7	737	67.7	768	74.0	797	80.4
29700	5000	499	30.8	541	36.7	580	42.5	618	48.4	653	54.2	686	60.1	718	66.1	748	72.2	778	78.6	806	85.2
30888	5200	516	34.1	557	40.3	595	46.4	631	52.4	665	58.5	698	64.6	729	70.8	759	77.0	788	83.5	816	90.2
32076	5400	532	37.7	572	44.1	609	50.4	644	56.7	678	63.1	710	69.4	741	75.7	770	82.2	799	88.8	826	95.6
33264	5600	549	41.5	588	48.2	624	54.7	658	61.3	691	67.9	723	74.4	753	81.0	782	87.6	810	94.3	837	101.2
34452	5800	566	45.7	603	52.5	639	59.3	672	66.1	704	72.9	735	79.7	765	86.5	794	93.3	821	100.2	848	107.2
CFM	OV FPM	11' SP		12' SP		13' SP		14' SP		15' SP		16' SP		17' SP		18' SP		19' SP		20' SP	
		RPM	BHP	RPM	BHP	RPM	BHP	RPM	BHP	RPM	BHP	RPM	BHP	RPM	BHP	RPM	BHP	RPM	BHP	RPM	BHP
14256	2400	746	37.5	778	41.0																
15444	2600	750	40.6	781	44.3	811	48.0	840	51.8												
16632	2800	754	43.9	785	47.8	815	51.7	843	55.6	871	59.7	899	63.7								
17820	3000	759	47.4	789	51.4	819	55.5	847	59.7	875	63.9	902	68.1	928	72.4	953	76.8	978	81.1	1006	90.9
19008	3200	765	51.0	795	55.3	824	59.6	852	63.9	879	68.3	906	72.7	931	77.2	957	81.8	981	86.3	1006	90.9
20196	3400	771	54.9	801	59.4	829	63.8	857	68.4	884	72.9	910	77.6	936	82.2	961	87.0	985	91.7	1009	96.5
21384	3600	778	59.0	807	63.6	835	68.3	863	73.0	889	77.8	915	82.6	940	87.5	965	92.4	989	97.3	1013	102.3
22572	3800	785	63.2	814	68.1	842	73.0	869	77.9	895	82.9	921	87.9	946	93.0	970	98.1	994	103.2	1017	108.4
23760	4000	793	67.7	821	72.8	849	77.9	876	83.1	902	88.2	927	93.5	952	98.7	976	104.0	999	109.3	1022	114.7
24948	4200	800	72.3	829	77.7	856	83.0	883	88.4	908	93.8	933	99.2	958	104.7	982	110.2	1005	115.7	1028	121.2
26136	4400	808	77.0	836	82.7	863	88.3	890	94.0	915	99.6	940	105.2	965	110.9	988	116.6	1011	122.3	1034	128.1
27324	4600	816	81.9	844	87.9	871	93.8	897	99.7	923	105.6	948	111.5	972	117.4	995	123.3	1018	129.2	1040	135.2
28512	4800	825	86.8	852	93.1	879	99.4	905	105.6	930	111.8	955	117.9	979	124.1	1002	130.2	1025	136.4	1047	142.6
29700	5000	834	91.9	861	98.5	887	105.1	913	111.7	938	118.1	962	124.6	986	131.0	1009	137.4	1032	143.8	1054	150.2
30888	5200	843	97.1	870	104.1	896	111.0	921	117.9	946	124.7	970	131.4	994	138.1	1017	144.8	1039	151.4	1061	158.1
32076	5400	853	102.6	879	109.7	905	117.0	930	124.2	955	131.3	978	138.4	1002	145.4	1025	152.3	1047	159.3	1069	166.2
33264	5600	863	108.4	889	115.7	914	123.1	939	130.6	963	138.0	987	145.5	1010	152.8	1033	160.1	1055	167.3	1076	174.5
34452	5800	874	114.5	899	121.9	924	129.5	948	137.2	972	144.9	995	152.7	1018	160.4	1041	168.0	1063	175.5	1084	183.0
35640	6000	885	120.9	910	128.4	934	136.2	958	144.1	981	152.0	1004	160.0	1027	168.0	1049	176.0	1071	183.9	1092	191.7
36828	6200	896	127.8	920	135.4	944	143.2	968	151.2	991	159.4	1014	167.6	1036	175.9	1058	184.1	1080	192.4	1101	200.6
38016	6400	907	134.9	931	142.7	955	150.6	978	158.7	1001	167.0	1023	175.4	1045	183.9	1067	192.5	1088	201.0	1109	209.5
CFM	OV FPM	22' SP		24' SP		26' SP		28' SP		30' SP		32' SP		34' SP		36' SP		38' SP		40' SP	
		RPM	BHP	RPM	BHP	RPM	BHP	RPM	BHP	RPM	BHP	RPM	BHP	RPM	BHP	RPM	BHP	RPM	BHP	RPM	BHP
19008	3200	1052	100.2																		
20196	3400	1055	106.2	1100	116.1																
21384	3600	1059	112.4	1103	122.7	1146	133.0	1187	143.6												
22572	3800	1063	118.8	1107	129.5	1149	140.2	1190	151.2	1230	162.2										
23760	4000	1067	125.5	1111	136.5	1153	147.7	1193	159.0	1233	170.4	1271	181.9	1309	193.6						
24948	4200	1072	132.5	1115	143.8	1157	155.4	1197	167.1	1236	178.9	1274	190.8	1312	202.8	1348	215.0	1383	227.3		
26136	4400	1078	139.7	1120	151.4	1162	163.3	1201	175.4	1240	187.6	1278	199.9	1315	212.3	1351	224.9	1386	237.6	1420	250.3
27324	4600	1084	147.2	1126	159.3	1167	171.6	1206	184.0	1245	196.6	1282	209.3	1319	222.1	1354	235.1	1389	248.1	1423	261.3
28512	4800	1090	155.0	1132	167.5	1172	180.2	1211	193.0	1250	205.9	1287	219.0	1323	232.2	1358	245.5	1393	259.0	1427	272.5
29700	5000	1097	163.1	1138	176.0	1178	189.1	1217	202.3	1255	215.6	1292	229.0	1327	242.6	1363	256.3	1397	270.1	1431	284.1
30888	5200	1104	171.4	1145	184.8	1185	198.3	1223	211.9	1261	225.6	1297	239.4	1333	253.3	1367	267.4	1401	281.6	1435	295.9
32076	5400	1111	180.0	1152	193.8	1192	207.8	1230	221.8	1267	235.9	1303	250.1	1338	264.4	1373	278.9	1406	293.4	1439	308.1
33264	5600	1119	188.9	1159	203.2	1198	217.6	1236	232.0	1273	246.5	1309	261.1	1344	275.9	1378	290.7	1412	305.6	1444	320.7
34452	5800	1126	197.9	1167	212.8	1206	227.6	1243													

ICF Performance

Size 37 LS

Wheel Diameter **64-3/8"**
 Inlet Diameter **37"**
 Outlet Area **7.47** sq. ft.

RPM Limits @70F			
	C/2	C/3HD	C/3
Wheel	1130	1130	1130
Shaft	981	981	1134

CFM	OV FPM	8' SP		10' SP		12' SP		14' SP		16' SP		18' SP		20' SP		22' SP		24' SP		26' SP	
		RPM	BHP	RPM	BHP	RPM	BHP	RPM	BHP	RPM	BHP	RPM	BHP	RPM	BHP	RPM	BHP	RPM	BHP	RPM	BHP
14940	2000	568	28.6																		
16434	2200	571	31.4	634	39.3																
17928	2400	575	34.4	637	42.8	695	51.5														
19422	2600	579	37.6	641	46.5	698	55.7	751	65.1												
20916	2800	585	41.1	645	50.4	701	60.1	753	70.0	803	80.1										
22410	3000	591	44.7	650	54.6	705	64.7	757	75.0	805	85.7	852	96.5								
23904	3200	597	48.5	656	58.9	710	69.5	761	80.4	809	91.5	855	102.8	898	114.3						
25398	3400	604	52.6	662	63.6	715	74.7	765	86.0	813	97.5	858	109.3	901	121.4	943	133.6				
26892	3600	610	56.8	668	68.4	721	80.1	771	91.9	817	103.9	862	116.2	905	126.7	946	141.4	985	154.2		
28386	3800	618	61.2	675	73.5	727	85.7	776	98.1	823	110.6	867	123.3	909	136.3	949	149.4	989	162.8	1026	176.3
29880	4000	625	65.6	682	78.7	734	91.6	782	104.5	828	117.6	872	130.8	913	144.2	953	157.8	992	171.7	1030	185.7
31374	4200	633	70.2	689	84.1	740	97.7	789	111.2	834	124.8	877	138.6	918	152.5	958	166.6	996	180.9	1033	195.4
32868	4400	641	75.0	696	89.7	747	104.1	795	118.2	840	132.4	883	146.7	924	161.1	963	175.7	1001	190.5	1038	205.4
34362	4600	650	79.9	704	95.3	754	110.6	802	125.5	847	140.3	889	155.1	930	170.1	968	185.2	1006	200.4	1042	215.8
35856	4800	659	85.3	712	101.2	762	117.2	809	132.9	853	148.4	895	163.8	936	179.4	974	195.0	1011	210.7	1047	226.7
37350	5000	669	90.9	721	107.2	770	124.0	816	140.5	860	156.8	902	172.9	942	189.0	980	205.1	1017	221.4	1053	237.9
38844	5200	678	97.0	729	113.6	778	130.9	823	148.3	867	165.3	909	182.2	948	198.9	987	215.6	1023	232.5		
40338	5400	689	103.5	739	120.3	786	138.1	831	156.2	874	174.1	916	191.7	955	209.1	993	226.5	1029	243.9		
41832	5600	699	110.3	748	127.4	795	145.6	839	164.3	882	183.0	923	201.4	962	219.6	1000	237.6	1036	255.7		
43326	5800	710	117.5	758	135.0	804	153.4	848	172.6	890	192.1	930	211.4	969	230.3	1006	249.1	1042	267.8		
44820	6000	720	125.2	768	143.1	813	161.7	856	181.3	898	201.4	938	221.5	976	241.3	1013	260.8	1049	280.2		
46314	6200	731	133.1	778	151.5	823	170.5	865	190.3	906	210.9	946	231.7	984	252.4	1020	272.7	1056	292.9		
47808	6400	742	141.5	789	160.4	832	179.7	874	199.8	915	220.8	954	242.2	991	263.7	1028	284.9				

Performance shown is for fan with outlet duct. Drive loss not included.

Size 41 LS

Wheel Diameter **71-1/4"**
 Inlet Diameter **41"**
 Outlet Area **9.17** sq. ft.

RPM Limits @70F			
	C/2	C/3HD	C/3
Wheel	995	995	995
Shaft	937	937	998

CFM	OV FPM	8' SP		10' SP		12' SP		14' SP		16' SP		18' SP		20' SP		22' SP		24' SP		26' SP	
		RPM	BHP	RPM	BHP	RPM	BHP	RPM	BHP	RPM	BHP	RPM	BHP	RPM	BHP	RPM	BHP	RPM	BHP	RPM	BHP
18340	2000	513	35.1																		
20174	2200	516	38.6	573	48.3																
22008	2400	519	42.3	576	52.6	628	63.2														
23842	2600	524	46.2	579	57.1	630	68.3	678	79.9												
25676	2800	528	50.4	583	61.9	633	73.7	681	85.9	725	98.3										
27510	3000	534	54.9	588	67.0	637	79.4	684	92.1	728	105.1	770	118.4								
29344	3200	539	59.6	593	72.4	642	85.4	687	98.7	731	112.3	772	126.2	812	140.3						
31178	3400	545	64.6	598	78.0	646	91.7	692	105.6	735	119.7	775	134.2	814	149.0	852	163.9				
33012	3600	552	69.8	604	84.0	652	98.3	696	112.8	739	127.6	779	142.6	818	157.9	855	173.5	890	189.3		
34846	3800	558	75.1	610	90.2	657	105.2	702	120.4	743	135.8	783	151.4	821	167.3	858	183.4	893	199.8	927	216.4
36680	4000	565	80.6	616	96.7	663	112.5	707	128.3	748	144.4	788	160.6	825	177.0	862	193.8	897	210.7	930	227.9
38514	4200	572	86.2	622	103.3	669	120.0	713	136.6	754	153.3	793	170.2	830	187.2	866	204.5	900	222.0	934	239.8
40348	4400	580	92.0	629	110.1	675	127.8	719	145.2	759	162.6	798	180.1	835	197.8	870	215.7	904	233.8	938	252.2
42182	4600	588	98.2	636	117.1	682	135.8	725	154.1	765	172.2	803	190.5	840	208.8	875	227.3	909	246.1	942	265.0
44016	4800	596	104.7	644	124.2	689	143.9	731	163.2	771	182.2	809	201.2	846	220.2	880	239.4	914	258.7	946	278.3
45850	5000	604	111.7	651	131.7	696	152.3	737	172.6	777	192.5	815	212.3	851	232.0	886	251.9	919	271.9	951	292.0
47684	5200	613	119.2	659	139.5	703	160.8	744	182.1	784	203.1	821	223.7	857	244.2	892	264.8	925	285.5	957	306.3
49518	5400	622	127.1	668	147.8	710	169.6	751	191.8	790	213.8	827	235.4	863	256.8	897	278.1	930	299.5	962	321.0
51352	5600	632	135.6	676	156.6	718	178.8	759	201.8	797	224.8	834	247.4	869	269.7	903	291.8	936	314.0	968	336.1
53186	5800	641	144.5	685	165.9	726	188.4	766	212.0	804	235.9	841	259.6	876	282.9	909	305.9	942	328.8	973	351.7
55020	6000	651	153.8	694	175.8	735	198.6	774	222.6	811	247.3	847	272.0	882	296.3	916	320.3	948	344.1	979	367.8
56854	6200	661	163.6	704	186.2	744	209.4	782	233.7	819	259.0	855	284.5	889	309.9	922	334.9	954	359.7	985	384.2
58688	6400	671	173.9	713	197.1	753	220.8	790	245.4	827	271.1	862	297.4	896	323.8	929	349.8	961	375.5	992	401.0

Performance shown is for fan with outlet duct. Drive loss not included.

ICF Performance

Size 23 AM

Wheel Diameter **40"**
 Inlet Diameter **23"**
 Outlet Area **2.89** sq. ft.

RPM Limits @70F

	C/2	C/3
Wheel	1450	1671
Shaft	1510	1733

CFM	OV FPM	6' SP		8' SP		10' SP		12' SP		14' SP		16' SP		18' SP		20' SP		22' SP		24' SP	
		RPM	BHP	RPM	BHP	RPM	BHP	RPM	BHP	RPM	BHP	RPM	BHP	RPM	BHP	RPM	BHP	RPM	BHP	RPM	BHP
5202	1800	809	7.2																		
5780	2000	815	7.9	933	10.7																
6358	2200	823	8.7	938	11.6																
6936	2400	833	9.6	944	12.7	1047	15.9														
7514	2600	844	10.5	953	13.8	1053	17.2	1146	20.7	1234	24.4										
8092	2800	856	11.5	963	14.9	1060	18.5	1151	22.2	1238	26.0	1319	30.0								
8670	3000	868	12.6	974	16.2	1070	19.9	1159	23.8	1243	27.8	1323	31.9	1400	36.1						
9248	3200	881	13.7	986	17.5	1080	21.4	1168	25.4	1250	29.6	1329	33.8	1404	38.2	1476	42.7	1546	47.2		
9826	3400	893	14.8	999	18.9	1092	23.0	1178	27.2	1258	31.5	1335	35.9	1409	40.4	1480	45.1	1549	49.8	1615	54.6
10404	3600	905	16.0	1011	20.3	1104	24.7	1189	29.0	1268	33.5	1344	38.1	1416	42.8	1486	47.6	1554	52.5	1619	57.5
10982	3800	918	17.3	1024	21.9	1117	26.4	1201	31.0	1279	35.6	1353	40.4	1424	45.2	1493	50.2	1559	55.2	1624	60.4
11560	4000	930	18.6	1036	23.4	1129	28.2	1213	33.0	1291	37.8	1364	42.8	1434	47.8	1501	52.9	1566	58.1	1630	63.4
12138	4200	942	20.0	1048	25.0	1142	30.1	1226	35.1	1303	40.1	1375	45.3	1444	50.4	1511	55.7	1575	61.1	1637	66.5
12716	4400	955	21.5	1060	26.7	1154	32.0	1238	37.3	1315	42.5	1387	47.8	1456	53.2	1521	58.7	1584	64.2	1645	69.8
13294	4600	967	23.0	1073	28.5	1166	34.0	1251	39.5	1328	45.0	1400	50.5	1467	56.1	1532	61.7	1595	67.4	1655	73.2
13872	4800	980	24.6	1085	30.4	1178	36.1	1263	41.8	1340	47.6	1412	53.3	1480	59.1	1544	64.9	1606	70.8	1665	76.8
14450	5000	994	26.2	1097	32.3	1190	38.3	1275	44.2	1353	50.2	1425	56.2	1492	62.2	1556	68.2	1617	74.3		
15028	5200	1007	27.8	1110	34.3	1203	40.5	1287	46.7	1365	52.9	1437	59.2	1505	65.4	1568	71.6	1629	77.9		
15606	5400	1020	29.6	1123	36.4	1215	42.8	1299	49.3	1377	55.7	1449	62.2	1517	68.7	1581	75.1	1642	81.6		
16184	5600	1034	31.4	1136	38.5	1228	45.3	1311	51.9	1389	58.6	1462	65.3	1529	72.0	1593	78.7	1654	85.4		
16762	5800	1048	33.3	1149	40.6	1240	47.8	1324	54.7	1401	61.6	1474	68.5	1542	75.5	1606	82.4	1667	89.4		
17340	6000	1062	35.3	1162	42.8	1253	50.3	1336	57.5	1414	64.7	1486	71.9	1554	79.0	1618	86.2				
17918	6200	1076	37.5	1176	45.1	1266	52.9	1349	60.5	1426	67.9	1498	75.3	1566	82.7	1630	90.1				
18496	6400	1091	39.8	1189	47.5	1279	55.6	1361	63.5	1438	71.2	1510	78.8	1578	86.4	1643	94.1				

Performance shown is for fan with outlet duct. Drive loss not included.

Size 26 AM

Wheel Diameter **45-1/8"**
 Inlet Diameter **26"**
 Outlet Area **3.69** sq. ft.

RPM Limits @70F

	C/2	C/3
Wheel	1260	1482
Shaft	1408	1549

CFM	OV FPM	6' SP		8' SP		10' SP		12' SP		14' SP		16' SP		18' SP		20' SP		22' SP		24' SP	
		RPM	BHP	RPM	BHP	RPM	BHP	RPM	BHP	RPM	BHP	RPM	BHP	RPM	BHP	RPM	BHP	RPM	BHP	RPM	BHP
6642	1800	718	9.2																		
7380	2000	722	10.1	827	13.6																
8118	2200	729	11.1	831	14.9	924	18.8														
8856	2400	738	12.3	837	16.2	928	20.3														
9594	2600	748	13.4	845	17.6	933	21.9	1016	26.4	1094	31.1										
10332	2800	759	14.7	854	19.1	940	23.6	1021	28.3	1097	33.2	1169	38.2								
11070	3000	770	16.1	864	20.7	949	25.4	1027	30.3	1102	35.4	1173	40.7	1241	46.0						
11808	3200	781	17.5	875	22.4	958	27.3	1035	32.5	1108	37.8	1178	43.2	1244	48.8	1308	54.5	1370	60.3		
12546	3400	792	18.9	886	24.1	968	29.4	1044	34.7	1116	40.2	1184	45.8	1249	51.6	1312	57.5	1373	63.6	1432	69.7
13284	3600	803	20.5	897	26.0	979	31.5	1054	37.1	1125	42.8	1191	48.6	1256	54.6	1317	60.7	1377	67.0	1435	73.3
14022	3800	814	22.1	908	27.9	990	33.7	1065	39.6	1134	45.5	1200	51.5	1263	57.7	1324	64.0	1382	70.5	1439	77.1
14760	4000	825	23.8	919	29.9	1001	36.0	1076	42.1	1145	48.3	1210	54.6	1272	61.0	1331	67.5	1389	74.2	1445	80.9
15498	4200	836	25.6	930	32.0	1012	38.4	1087	44.8	1155	51.3	1220	57.8	1281	64.4	1340	71.1	1396	78.0	1451	84.9
16236	4400	847	27.5	940	34.2	1023	40.9	1098	47.6	1166	54.3	1230	61.1	1291	68.0	1349	74.9	1405	82.0	1459	89.1
16974	4600	858	29.4	951	36.4	1034	43.5	1109	50.5	1178	57.5	1241	64.6	1301	71.7	1359	78.8	1414	86.1	1467	93.5
17712	4800	869	31.4	962	38.8	1045	46.1	1120	53.5	1189	60.8	1252	68.1	1312	75.5	1369	82.9	1424	90.4	1477	98.0
18450	5000	881	33.5	973	41.3	1056	48.9	1131	56.5	1200	64.2	1263	71.8	1323	79.4	1380	87.1	1434	94.9		
19188	5200	893	35.6	984	43.8	1067	51.8	1141	59.7	1210	67.6	1274	75.6	1334	83.5	1391	91.5	1445	99.5		
19926	5400	905	37.8	996	46.5	1078	54.7	1152	63.0	1221	71.2	1285	79.5	1345	87.7	1402	96.0	1456	104.2		
20664	5600	917	40.1	1007	49.1	1089	57.8	1163	66.4	1232	74.9	1296	83.5	1356	92.0	1413	100.6	1467	109.1		
21402	5800	929	42.5	1019	51.9	1100	61.0	1174	69.9	1243	78.7	1307	87.6	1367	96.4	1424	105.3	1478	114.2		
22140	6000	942	45.1	1031	54.7	1111	64.3	1185	73.5	1254	82.6	1318	91.8	1378	101.0	1435	110.1				
22878	6200	955	47.9	1043	57.6	1123	67.6	1196	77.3	1265	86.7	1329	96.2	1389	105.6	1446	115.1				
23616	6400	967	50.9	1055	60.7	1134	71.0	1207	81.1	1276	90.9	1339	100.6	1400	110.4	1457	120.2				

Performance shown is for fan with outlet duct. Drive loss not included.

ICF Performance

Size 29 AM

Wheel Diameter **50-1/2"**
 Inlet Diameter **29"**
 Outlet Area **4.59** sq. ft.

RPM Limits @70F

	C/2	C/3
Wheel	1010	1324
Shaft	1153	1421

CFM	OV FPM	6' SP		8' SP		10' SP		12' SP		14' SP		16' SP		18' SP		20' SP		22' SP		24' SP	
		RPM	BHP	RPM	BHP	RPM	BHP	RPM	BHP	RPM	BHP	RPM	BHP	RPM	BHP	RPM	BHP	RPM	BHP	RPM	BHP
8262	1800	641	11.4																		
9180	2000	645	12.6	739	17.0																
10098	2200	651	13.9	743	18.5	826	23.4														
11016	2400	659	15.2	748	20.1	829	25.3														
11934	2600	668	16.7	754	21.9	834	27.3	908	32.9	977	38.7										
12852	2800	678	18.3	762	23.7	840	29.4	912	35.3	980	41.4	1045	47.6								
13770	3000	688	20.0	771	25.7	847	31.6	918	37.8	984	44.1	1048	50.6	1109	57.3						
14688	3200	697	21.7	781	27.8	855	34.0	925	40.4	990	47.0	1052	53.8	1112	60.7	1169	67.8	1224	75.1		
15606	3400	707	23.5	791	30.0	865	36.5	933	43.2	997	50.0	1058	57.0	1116	64.3	1173	71.6	1227	79.2	1279	86.8
16524	3600	717	25.5	801	32.3	874	39.2	941	46.1	1004	53.2	1064	60.5	1121	68.0	1177	75.6	1230	83.4	1282	91.3
17442	3800	726	27.5	810	34.7	884	41.9	951	49.2	1013	56.6	1072	64.1	1128	71.8	1182	79.7	1235	87.7	1286	95.9
18360	4000	736	29.6	820	37.2	894	44.8	960	52.4	1022	60.1	1080	67.9	1135	75.9	1189	84.0	1240	92.3	1291	100.7
19278	4200	746	31.8	830	39.8	904	47.7	970	55.7	1031	63.7	1089	71.9	1144	80.1	1196	88.5	1247	97.0	1296	105.7
20196	4400	756	34.1	839	42.5	914	50.8	980	59.2	1041	67.5	1098	76.0	1153	84.5	1204	93.2	1254	102.0	1303	110.9
21114	4600	766	36.5	849	45.3	923	54.0	990	62.7	1051	71.5	1108	80.2	1162	89.1	1213	98.0	1263	107.1	1310	116.3
22032	4800	776	39.0	859	48.2	933	57.3	1000	66.4	1061	75.5	1118	84.7	1171	93.8	1222	103.1	1271	112.4	1318	121.9
22950	5000	786	41.6	869	51.3	942	60.7	1009	70.2	1071	79.7	1128	89.2	1181	98.7	1232	108.3	1280	118.0		
23868	5200	797	44.2	879	54.4	952	64.3	1019	74.2	1081	84.0	1138	93.9	1191	103.8	1242	113.7	1290	123.7		
24786	5400	808	46.9	889	57.7	962	68.0	1029	78.2	1090	88.5	1147	98.8	1201	109.0	1251	119.3	1300	129.6		
25704	5600	819	49.8	899	61.0	972	71.8	1038	82.4	1100	93.1	1157	103.7	1211	114.4	1261	125.0	1309	135.6		
26622	5800	830	52.8	910	64.5	982	75.8	1048	86.8	1109	97.8	1167	108.8	1221	119.8	1271	130.9	1319	141.9		
27540	6000	841	56.0	920	68.0	992	79.9	1058	91.3	1119	102.7	1176	114.0	1230	125.5	1281	136.9				
28458	6200	852	59.4	931	71.6	1002	84.0	1068	96.0	1129	107.7	1186	119.5	1240	131.2	1291	143.0				
29376	6400	863	63.1	942	75.3	1012	88.3	1078	100.8	1139	112.9	1196	125.0	1250	137.2	1300	149.3				

Performance shown is for fan with outlet duct. Drive loss not included.

Size 33 AM

Wheel Diameter **57-1/2"**
 Inlet Diameter **33"**
 Outlet Area **5.94** sq. ft.

RPM Limits @70F

	C/2	C/3
Wheel	770	1163
Shaft	1057	1193

CFM	OV FPM	6' SP		8' SP		10' SP		12' SP		14' SP		16' SP		18' SP		20' SP		22' SP		24' SP	
		RPM	BHP	RPM	BHP	RPM	BHP	RPM	BHP	RPM	BHP	RPM	BHP	RPM	BHP	RPM	BHP	RPM	BHP	RPM	BHP
10692	1800	563	14.8																		
11880	2000	567	16.3	649	22.0																
13068	2200	572	17.9	652	24.0	725	30.3														
14256	2400	579	19.7	657	26.1	728	32.7														
15444	2600	587	21.6	662	28.3	732	35.3	797	42.6	858	50.1										
16632	2800	595	23.7	670	30.7	737	38.0	801	45.7	861	53.5	918	61.6								
17820	3000	604	25.8	677	33.3	744	40.9	806	48.9	864	57.1	920	65.5	974	74.2						
19008	3200	612	28.1	686	36.0	751	44.0	812	52.3	869	60.8	924	69.6	976	78.6	1027	87.8	1075	97.2		
20196	3400	621	30.5	694	38.8	759	47.3	819	55.9	875	64.7	929	73.8	980	83.2	1030	92.7	1077	102.5	1124	112.4
21384	3600	629	32.9	703	41.8	768	50.7	827	59.7	882	68.9	934	78.3	985	88.0	1034	97.8	1081	107.9	1126	118.2
22572	3800	638	35.5	712	44.9	776	54.2	835	63.6	889	73.2	941	83.0	991	93.0	1038	103.2	1085	113.6	1129	124.2
23760	4000	646	38.3	720	48.1	785	57.9	843	67.8	897	77.7	948	87.9	997	98.2	1044	108.7	1089	119.4	1133	130.4
24948	4200	655	41.1	729	51.4	794	61.8	852	72.1	906	82.5	956	93.0	1004	103.7	1050	114.5	1095	125.6	1138	136.8
26136	4400	664	44.1	737	54.9	802	65.7	861	76.6	914	87.4	964	98.3	1012	109.3	1058	120.6	1102	132.0	1144	143.5
27324	4600	672	47.3	746	58.6	811	69.9	869	81.2	923	92.5	973	103.8	1020	115.3	1065	126.8	1109	138.6	1151	150.5
28512	4800	681	50.5	754	62.4	819	74.1	878	85.9	932	97.7	982	109.5	1029	121.4	1073	133.4	1116	145.5	1158	157.7
29700	5000	691	53.8	763	66.3	827	78.6	886	90.9	940	103.2	990	115.4	1037	127.8	1082	140.1	1124	152.6		
30888	5200	700	57.2	772	70.4	836	83.2	895	95.9	949	108.7	999	121.5	1046	134.3	1090	147.1	1133	160.0		
32076	5400	709	60.7	780	74.6	845	88.0	903	101.2	957	114.5	1008	127.8	1055	141.0	1099	154.3	1141	167.6		
33264	5600	719	64.4	789	79.0	853	92.9	912	106.6	966	120.4	1016	134.2	1063	148.0	1108	161.7	1150	175.5		
34452	5800	728	68.3	799	83.4	862	98.1	920	112.3	974	126.5	1025	140.8	1072	155.0	1116	169.3	1158	183.6		
35640	6000	738	72.4	808	87.9	871	103.3	929	118.1	983	132.8	1033	147.5	1080	162.3	1125	177.1				
36828	6200	748	76.9	817	92.6	880	108.7	938	124.2	991	139.3	1041	154.5	1089	169.8	1133	185.0				
38016	6400	758	81.6	827	97.5	889	114.2	946	130.4	1000	146.1	1050	161.7	1097	177.5	1142	193.2				

Performance shown is for fan with outlet duct. Drive loss not included.

ICF Performance

Size 37 AM

Wheel Diameter **64-3/8"**
 Inlet Diameter **37"**
 Outlet Area **7.47** sq. ft.

RPM Limits @70F
 C/2 C/3

Wheel	820	1039
Shaft	981	1130

CFM	OV FPM	6" SP		8" SP		10" SP		12" SP		14" SP		16" SP		18" SP		20" SP		22" SP		24" SP	
		RPM	BHP	RPM	BHP	RPM	BHP	RPM	BHP	RPM	BHP	RPM	BHP	RPM	BHP	RPM	BHP	RPM	BHP	RPM	BHP
13446	1800	503	18.6																		
14940	2000	506	20.5	580	27.6																
16434	2200	511	22.6	583	30.1	648	38.1														
17928	2400	517	24.8	587	32.8	650	41.1														
19422	2600	524	27.2	592	35.6	654	44.4	712	53.5	767	63.0										
20916	2800	532	29.8	598	38.6	659	47.8	715	57.4	769	67.3	820	77.4								
22410	3000	539	32.5	605	41.8	665	51.5	720	61.4	772	71.8	822	82.4								
23904	3200	547	35.3	613	45.3	671	55.4	725	65.7	777	76.5	825	87.5	872	98.8						
25398	3400	555	38.3	620	48.8	678	59.4	732	70.3	782	81.4	830	92.8	876	104.6	920	116.6	962	128.8		
26892	3600	562	41.4	628	52.6	686	63.7	739	75.0	788	86.6	835	98.5	880	110.6	923	123.0	965	135.7	1006	148.6
28386	3800	570	44.7	636	56.5	694	68.2	746	80.0	795	92.1	841	104.3	885	116.9	928	129.7	969	142.8	1009	156.1
29880	4000	578	48.1	644	60.5	701	72.9	754	85.3	802	97.8	847	110.5	891	123.5	933	136.7	973	150.2	1013	163.9
31374	4200	585	51.8	651	64.7	709	77.7	761	90.7	809	103.7	854	117.0	897	130.4	939	144.0	978	157.9	1017	172.0
32868	4400	593	55.6	659	69.1	717	82.7	769	96.3	817	109.9	862	123.7	904	137.5	945	151.6	984	165.9	1022	180.5
34362	4600	601	59.5	666	73.7	724	87.9	777	102.1	825	116.4	869	130.6	912	145.0	952	159.5	991	174.3	1028	189.3
35856	4800	609	63.5	674	78.5	732	93.3	784	108.1	833	123.0	877	137.8	919	152.7	959	167.8	997	183.0	1034	198.4
37350	5000	617	67.7	682	83.5	739	98.9	792	114.3	840	129.8	885	145.2	927	160.7	967	176.3	1005	192.0		
38844	5200	625	71.9	690	88.6	747	104.7	800	120.7	848	136.8	893	152.9	935	169.0	974	185.1	1012	201.3		
40338	5400	634	76.4	697	93.9	755	110.7	807	127.3	855	144.0	900	160.7	942	177.4	982	194.1	1020	210.9		
41832	5600	642	81.0	706	99.4	762	117.0	815	134.2	863	151.5	908	168.8	950	186.1	990	203.5	1027	220.8		
43326	5800	651	86.0	714	104.9	770	123.4	822	141.3	871	159.2	916	177.1	958	195.1	998	213.0	1035	230.9		
44820	6000	660	91.2	722	110.6	778	130.0	830	148.7	878	167.1	923	185.7	965	204.2	1005	222.8				
46314	6200	668	96.8	730	116.5	786	136.8	838	156.3	886	175.3	931	194.5	973	213.6	1013	232.8				
47808	6400	677	102.7	739	122.7	794	143.7	846	164.1	893	183.8	938	203.5	980	223.3	1020	243.1				

Performance shown is for fan with outlet duct. Drive loss not included.

Size 41 AM

Wheel Diameter **71-1/4"**
 Inlet Diameter **41"**
 Outlet Area **9.17** sq. ft.

RPM Limits @70F
 C/2 C/3

Wheel	660	938
Shaft	937	995

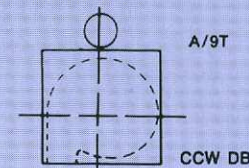
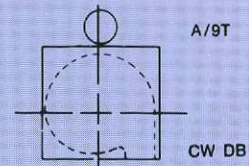
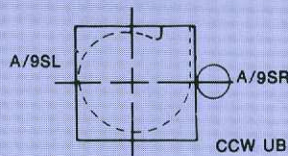
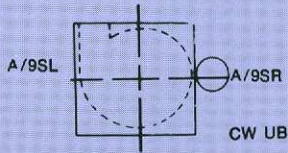
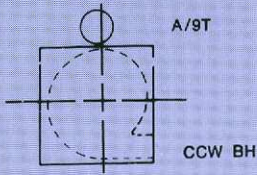
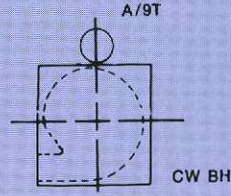
CFM	OV FPM	6" SP		8" SP		10" SP		12" SP		14" SP		16" SP		18" SP		20" SP		22" SP		24" SP	
		RPM	BHP	RPM	BHP	RPM	BHP	RPM	BHP	RPM	BHP	RPM	BHP	RPM	BHP	RPM	BHP	RPM	BHP	RPM	BHP
16506	1800	454	22.8																		
18340	2000	457	25.1	524	33.9																
20174	2200	462	27.7	526	37.0	585	46.7														
22008	2400	467	30.4	530	40.2	588	50.5														
23842	2600	474	33.4	535	43.7	591	54.5	643	65.7	693	77.3										
25676	2800	481	36.6	541	47.4	595	58.7	646	70.4	695	82.6	741	95.0								
27510	3000	488	39.9	547	51.4	601	63.2	650	75.4	698	88.1	743	101.1	786	114.4						
29344	3200	495	43.4	554	55.6	607	68.0	656	80.7	702	93.8	746	107.4	788	121.2	829	135.4	868	149.8		
31178	3400	501	47.1	561	60.0	613	73.0	661	86.3	707	99.9	750	113.9	791	128.3	831	143.0	870	158.0	907	173.3
33012	3600	508	50.9	568	64.6	620	78.2	667	92.1	712	106.3	754	120.8	795	135.7	834	150.9	872	166.5	909	182.3
34846	3800	515	54.9	575	69.3	627	83.8	674	98.3	718	113.0	760	128.1	800	143.5	838	159.2	875	175.2	912	191.6
36680	4000	522	59.1	582	74.3	634	89.5	681	104.7	725	120.1	766	135.7	805	151.6	843	167.8	879	184.3	915	201.2
38514	4200	529	63.6	588	79.5	641	95.4	688	111.4	731	127.4	772	143.6	811	160.0	848	176.8	884	193.8	919	211.1
40348	4400	536	68.2	595	84.9	648	101.6	695	118.3	738	135.0	779	151.8	817	168.9	854	186.1	889	203.7	924	221.5
42182	4600	543	73.0	602	90.5	655	107.9	702	125.4	745	142.9	786	160.4	824	178.0	860	195.9	895	214.0	929	232.3
44016	4800	550	78.0	609	96.4	661	114.5	709	132.8	752	151.0	793	169.2	831	187.5	867	206.0	901	224.6	935	243.5
45850	5000	558	83.1	616	102.5	668	121.4	716	140.4	759	159.4	800	178.4	838	197.3	874	216.4	908	235.7		
47684	5200	565	88.3	623	108.8	675	128.5	723	148.2	766	168.0	807	187.7	845	207.5	880	227.3	915	247.1		
49518	5400	573	93.8	630	115.4	682	136.0	729	156.4	773	176.9	814	197.4	852	217.9	887	238.4	922	259.0		
51352	5600	581	99.5	638	122.0	689	143.6	736	164.8	780	186.0	821	207.3	859	228.6	895	249.8	929	271.1		
53186	5800	588	105.6	645	128.8	696	151.6	743	173.5	787	195.5	827	217.5	866	239.5	902	261.6	936	283.6		
55020	6000	596	112.0	653	135.8	703	159.7	750	182.6	794	205.2	834	228.0	872	250.8	908	273.6				
56854	6200	604	118.9	660	143.1	711	168.0	757	191.9	800	215.3	841	238.8	879	262.3	915	285.9				
58688	6400	612	126.2	668	150.6	718	176.4	764	201.5	807	225.8	848	249.9	886	274.2	922	298.5				

Performance shown is for fan with outlet duct. Drive loss not included.

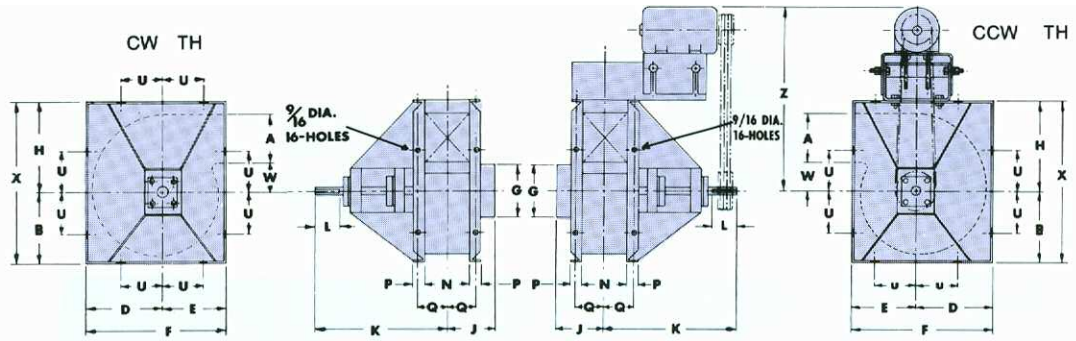
Square Housing - Arrangements 1 and 9

SQL Class 2 — Sizes 5 thru 17

POSITION OF DISCHARGE & ROTATION



A/9T & A/9S ILLUSTRATED
A/I VIEWED THE SAME
LESS MOTOR BASE
VIEW SHOWN FROM DRIVE SIDE



DIMENSIONS (inches)

FAN SIZE	WHL DIA.	SHAFT	KEYWAY	A	B	D	E	F	G	H
5	8-3/4	15/16	1/4 x 1/8	4-15/32	7-5/16	8	6-1/8	14-1/8	5	9-1/16
6	10-1/2	1-3/16	1/4 x 1/8	5-5/8	8-9/16	9-3/8	7-3/8	16-3/4	6	10-9/16
7	12-1/4	1-3/16	1/4 x 1/8	6-5/8	9-7/16	10-3/16	8-9/16	18-3/4	7	12-1/16
9	15-5/8	1-3/16	1/4 x 1/8	8-1/2	11-15/16	13	11	24	9	15-1/16
11	19-1/8	1-7/16	3/8 x 3/16	10-7/16	14-5/8	16-1/4	13-1/2	29-3/4	11	18-1/8
13	22-5/8	1-7/16	3/8 x 3/16	12-11/32	17-5/16	18-7/8	15-7/8	34-3/4	13	21-11/16
15	26-1/8	1-15/16	1/2 x 1/4	14-1/4	19-13/16	21-5/8	18-3/8	40	15	24-11/16
17	29-5/8	1-15/16	1/2 x 1/4	16-1/8	22-5/16	24-3/8	20-3/4	45-1/8	17	27-11/16

FAN SIZE	J	K	L	N	P	Q	U	W	X	Z*	A/9* MAX FRAME
5	2-31/32	13-3/4	2	4-3/16	1-1/2	3	3	3-1/16	16-3/8	28	184
6	3-1/2	14-7/8	2-1/2	5	1-1/2	3-3/8	4-3/4	3-7/16	19-1/8	29-1/2	184
7	4-1/8	17-13/16	3	5-7/8	1-1/2	3-13/16	5-3/8	3-15/16	21-1/2	31	184
9	5-1/8	19-11/16	4	7-1/2	1-1/2	4-5/8	7-7/8	5-1/16	27	37-1/4	256
11	8	20-7/8	4	9-1/8	1-1/2	5-7/16	10	6-3/16	32-3/4	40-3/8	256
13	9-1/8	26-1/8	4-1/2	10-13/16	2	6-1/2	12-1/8	7-3/8	39	43-15/16	256
15	10	27-11/16	5-1/4	12-1/2	2	7-3/8	14-5/8	8-7/16	44-1/2	46-15/16	256
17	11	28-11/16	5-1/4	14-1/8	2	8-3/16	17	9-9/16	50	49-15/16	256

*Z dimensions based on maximum frame size

*Max. frame sizes apply only to Arrangement 9T/9S

V-BELT DRIVE CENTERS* — ARRANGEMENT 9T & 9S

FAN SIZE	MOTOR FRAME	T.H. 9T (TOP)		B.H.-9T (TOP)		D.B.-9T (TOP)	
		D.B.-C.C.W. 9 SL	D.B.-C.W. 9 SR	D.B.-C.C.W. 9 SR	T.H.-C.C.W. 9 SR	T.H.-C.W. 9 SL	B.H.-C.C.W. 9 SL
		MIN CENTER	MAX CENTER	MIN CENTER	MAX CENTER	MIN CENTER	MAX CENTER
5	48	18-13/16	20-5/16	17-1/16	18-9/16	17-3/4	19-1/4
	56-143-145	19-5/16	20-13/16	17-9/16	19-1/16	18-1/4	19-3/4
	182-184	20-5/16	21-13/16	18-9/16	20-1/16	19-1/4	20-3/4
6	48	20-5/16	21-13/16	18-5/16	19-13/16	19-1/8	20-5/8
	56-143-145	20-13/16	22-5/16	18-13/16	20-5/16	19-5/8	21-1/8
	182-184	21-13/16	23-5/16	19-13/16	21-5/16	20-5/8	22-1/8
7	48	21-13/16	23-5/16	19-3/16	20-11/16	19-15/16	21-7/16
	56-143-145	22-5/16	23-13/16	19-11/16	21-3/16	20-7/16	21-15/16
	182-184	23-5/16	24-13/16	20-11/16	22-3/16	21-7/16	22-15/16
9	56-143-145	25-5/16	26-13/16	22-3/16	23-11/16	23-1/4	24-3/4
	182-184	26-5/16	27-13/16	23-3/16	24-11/16	24-1/4	25-3/4
	213-215	27-1/16	28-9/16	23-15/16	25-7/16	25	26-1/2
254-256	28-1/16	29-9/16	24-15/16	26-7/16	26	27-1/2	
11	56-143-145	28-3/8	29-7/8	24-7/8	26-3/8	26-1/2	28
	182-184	29-3/8	30-7/8	25-7/8	27-3/8	27-1/2	29
	213-215	30-1/8	31-5/8	26-5/8	28-1/8	28-1/4	29-3/4
254-256	31-1/8	32-5/8	27-5/8	29-1/8	29-1/4	30-3/4	
13	56-143-145	31-15/16	33-7/16	27-9/16	29-1/16	29-1/8	30-5/8
	182-184	32-15/16	34-7/16	28-9/16	30-1/16	30-1/8	31-5/8
	213-215	33-11/16	35-3/16	29-5/16	30-13/16	30-7/8	32-3/8
254-256	34-11/16	36-3/16	30-5/16	31-13/16	31-7/8	33-3/8	
15	143-145	34-15/16	36-7/16	30-1/16	31-9/16	31-7/8	33-3/8
	182-184	35-15/16	37-7/16	31-1/16	32-9/16	32-7/8	34-3/8
	213-215	36-11/16	38-3/16	31-13/16	33-5/16	33-5/8	35-1/8
254-256	37-11/16	39-3/16	32-13/16	34-5/16	34-5/8	36-1/8	
17	145	37-15/16	39-7/16	32-9/16	34-1/16	34-9/16	36-1/16
	182-184	38-15/16	40-7/16	33-9/16	35-1/16	35-9/16	37-1/16
	213-215	39-11/16	41-3/16	34-5/16	35-13/16	36-5/16	37-13/16
254-256	40-11/16	42-3/16	35-5/16	36-13/16	37-5/16	38-13/16	

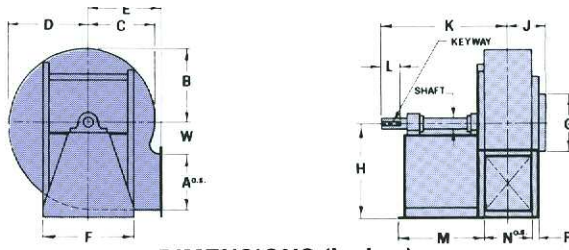
*Belt centers include allowances for belt mounting and tensioning.

NOTE: DIMENSIONS NOT TO BE USED FOR CONSTRUCTION UNLESS CERTIFIED.

Fixed Housing - Arrangements 1 and 9

Design 16/A Class 1-2-3 — Sizes 11 thru 41

SIDE ELEVATION (drive side)



DIMENSIONS (inches)

FAN SIZE	WHL. DIA.	SHAFT			KEYWAY			A	B	C	D	E
		CL II	CL III	CL IV	CL II	CL III	CL IV					
11	19 1/8	1 11/16	1 1/16	1 1/16	3/8 x 3/16	1/2 x 1/4	10 5/8	13 1/16	12 3/16	15 5/16	14 1/2	
13	22 3/8	1 1/16	2 3/16	2 3/16	3/8 x 3/16	1/2 x 1/4	12 5/8	16 3/8	14 1/16	18 3/8	16 1/2	
15	26 1/8	2 3/16	2 7/16	2 7/16	1/2 x 1/4	5/8 x 3/16	14 1/2	19 1/16	17 3/16	20 1/16	19 3/8	
17	29 5/8	2 3/16	2 1/16	2 1/16	1/2 x 1/4	5/8 x 3/16	16 7/16	21 1/16	19 7/16	23 1/16	21 3/4	
19	33	2 3/16	2 7/16	2 7/16	1/2 x 1/4	5/8 x 3/16	18 1/4	24	21 5/8	26 3/8	24 3/16	
21	36 1/2	2 3/16	2 7/16	3 1/16	1/2 x 1/4	5/8 x 3/16	20 3/16	26 3/16	23 3/16	29 3/16	26 5/8	
23	40	2 7/16	2 11/16	3 1/16	5/8 x 3/16	5/8 x 3/16	22 1/8	29 3/16	26 7/16	32 1/16	29 5/8	
26	45 1/8	2 11/16	2 7/16	4 3/16	5/8 x 3/16	3/4 x 3/8	24 13/16	32 1/16	29 1/16	36 3/16	33 3/16	
29	50 1/2	2 11/16	3 3/16	4 7/16	5/8 x 3/16	3/4 x 3/8	27 3/4	36 3/16	33 7/16	40 7/16	37	
33	57 1/2	2 11/16	3 3/16	4 1/16	3/4 x 3/8	3/4 x 3/8	31 3/4	41 1/16	37 3/4	46	41 1/16	
37	64 3/8	3 3/16	3 7/16	4 1/16	3/4 x 3/8	7/8 x 7/16	35 1/2	46 3/8	42 1/4	51 1/2	46 13/16	
41	71 1/4	3 7/16	3 1/16	4 1/16	7/8 x 7/16	7/8 x 7/16	39 3/4	51 3/8	46 3/4	57	52 3/32	

FAN SIZE	F		G	H	J		K		L		M		N	P	W
	CL II & III	CL IV			LS	AM	CL II & III	CL IV	CL II & III	CL IV	CL II & III	CL IV			
11	16 3/4	18	11	20	8 3/32		26 5/16	29 1/8	4	4 1/2	17 3/8	19 13/16	9 1/16	1 1/2	6 1/16
13	15 7/8	21	13	23	9 7/32		32 7/16	35 5/8	4 1/2	5 1/4	22 1/8	25 1/8	11 1/16	2	7 3/16
15	18 1/8	24	15	26	10 1/8		35 3/8	38 1/16	5 1/4	5 3/4	23 1/2	26 3/8	12 3/4	2	8 5/16
17	20 1/8	27	17	29	11 1/16		38 3/16	41 1/16	5 1/4	5 3/4	25 3/8	30 3/16	14 3/8	2	9 3/8
19	22 1/4	30	19	32	12		41 3/8	45 3/8	5 3/4	7	27 3/8	31 3/8	16	2	10 1/2
21	24 1/4	33 1/2	21	35	14 1/32		42 1/4	46 3/8	5 3/4	7	27 3/8	31 3/4	17 1/16	2	11 5/8
23	37	37	23	39	15 21/32	15 5/8	50 5/16	51 3/8	7	8 1/2	34 1/2	34 3/16	19 3/16	2 1/2	12 3/4
26	42 1/2	42 1/2	26	44	17 3/32	16 3/8	52 5/16	54 3/8	7	8 1/2	36 1/16	36 1/16	22 3/16	2 1/2	14 3/16
29	46 1/4	46 1/4	29	48	18 3/32	17 1/16	58 3/4	61 3/8	8 1/2	10	39 1/16	40 1/4	24 17/32	2 1/2	16 1/16
33	51 3/4	51 3/4	33	54	19 29/32	19 3/32	60 7/8	63 3/4	8 1/2	10	39 1/16	40 7/8	27 1/16	2 1/2	18 1/16
37	57 1/2		37	60	23 1/16	22 1/32	62 1/16		8 1/2		39 1/16		31	3	20 3/8
41	74		41	67 1/2	24 1/2	23 3/4	66		8 1/2		44 1/16		34 1/2	4	22 7/8

† DIMENSION SHOWN IS FOR BH DISCHARGE. OTHER DISCHARGES WILL VARY.

Arrangement 9 maximum allowable motor frames. Refer to Physical Data Sheet for hp limitations and overall motor length restrictions.

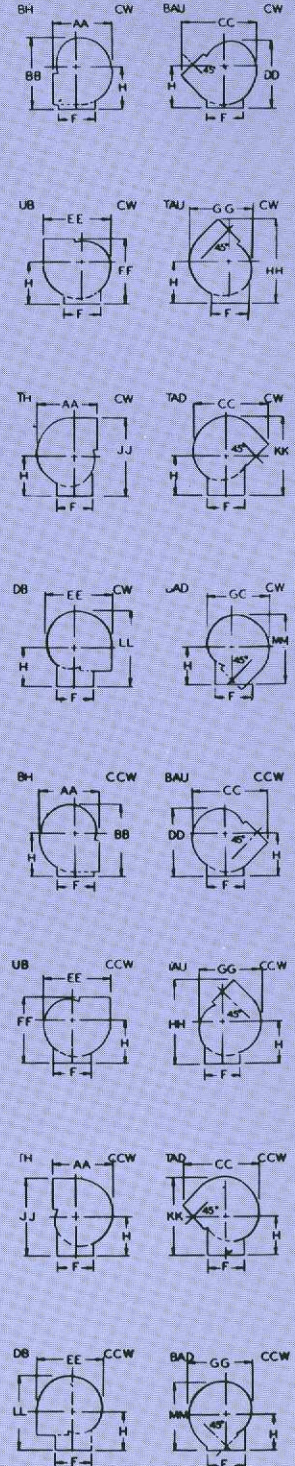
* Class 4 — 256T
** Class 4 — 326T

FAN SIZE		11	13*	15	17**	19 & 21	23	26	29-37
Frames	"T"	ODP	215T	286T	286T	364T	365T	365T	445T
	TE	215T	284T	284T	324T	326T	365T	405T	444T
Frames	"U"	ODP	215	286U	286U	364U	365U	365U	445U
	TE	215	284U	286U	364U	365U	365U	405U	444U

FAN SIZE	AA	BB	CC	DD	EE	FF	GG	HH	JJ	KK	LL	MM
11	29 13/16	33 3/16	36 1/16	33 3/4	30 3/8	34 1/2	29 3/4	42 1/16	36 11/16	36	35 3/16	34 3/8
13	35 5/8	39 3/16	43 3/8	38 3/4	36 3/8	39 3/16	34 3/4	49	42 3/16	42	41 3/16	40 3/8
15	40 5/8	45 1/16	49 3/8	44 3/8	42 3/16	45 3/8	40	55 5/8	48 3/16	47 7/8	46 1/16	46
17	45 1/16	50 3/16	56 1/4	49 1/2	47 13/16	50 3/4	45 1/4	62 5/8	54 13/16	53 3/4	52 1/16	51 5/8
19	50 3/16	56	62 3/8	54 13/16	52 3/4	56 3/16	50 3/8	69 7/16	60 3/4	59 1/16	58 3/8	59 1/16
21	55 3/16	61 3/16	69 3/16	60 1/4	58 3/8	61 3/8	55 3/4	76 3/16	66 13/16	65 1/2	64 3/16	62 7/8
23	61 11/16	68 3/16	76 3/16	66 3/4	64 1/16	68 3/8	61 3/8	84 3/8	73 3/8	72 1/2	71 1/16	69 3/8
26	69 3/8	76 15/16	85 13/16	75 1/2	72 5/16	77 3/16	69 1/8	95 3/16	83 3/8	81 7/8	80 3/16	78 1/2
29	77 7/16	84 13/16	96	83	80 7/8	85	77 1/4	105 1/16	92 1/16	90 3/8	88 3/2	86 3/8
33	87 13/16	95 5/16	109 1/4	94	92 1/8	95 3/16	88 3/4	119 1/4	104 3/16	102	100	98 3/8
37	98 5/16	106 7/16	122	104 3/16	103	106 3/16	98 3/8	132 3/4	116 3/8	113 13/16	111 1/2	109 3/16
41	114	119	142	114	122	115	117	142	122	116		

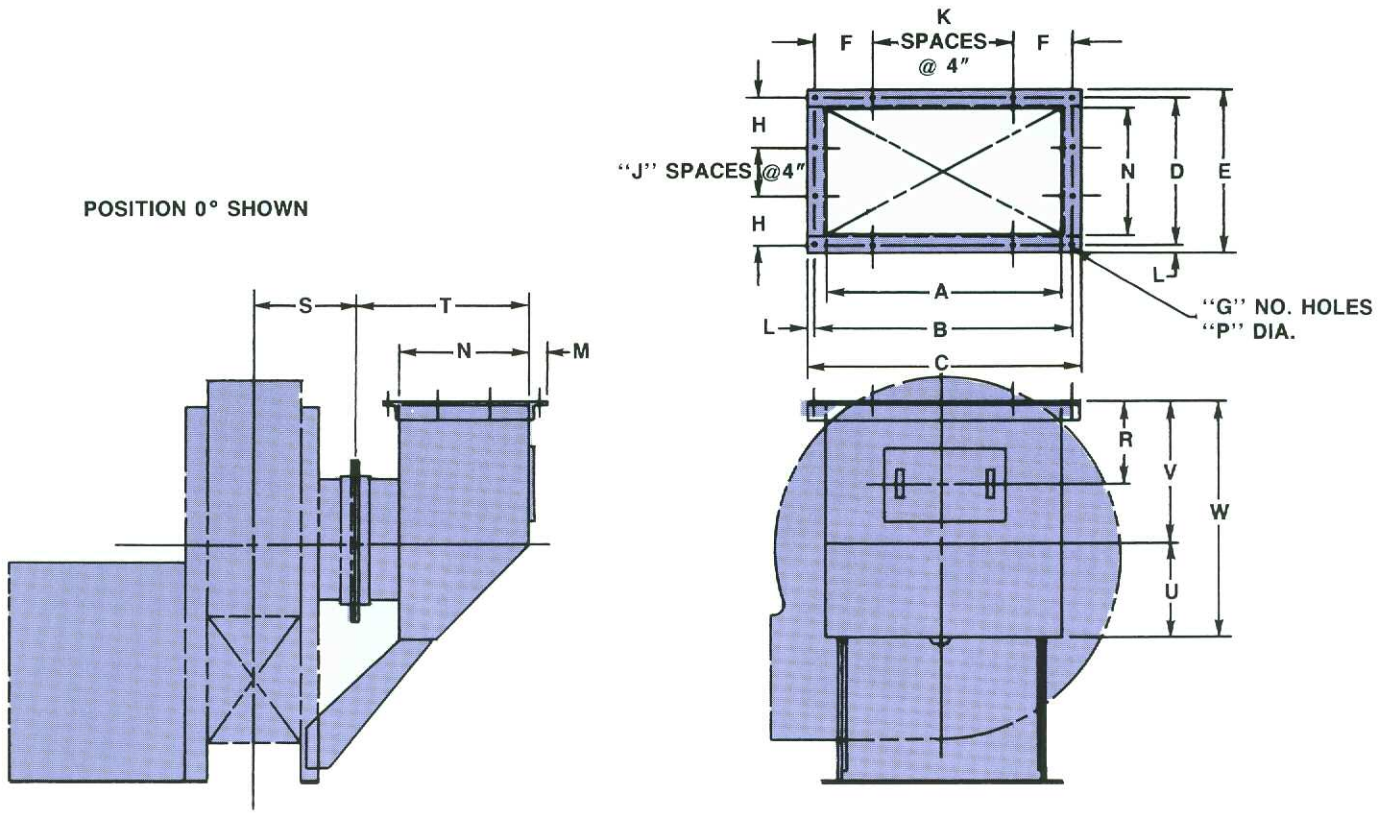
NOTE: DIMENSIONS NOT TO BE USED FOR CONSTRUCTION UNLESS CERTIFIED.

POSITION OF DISCHARGE & ROTATION



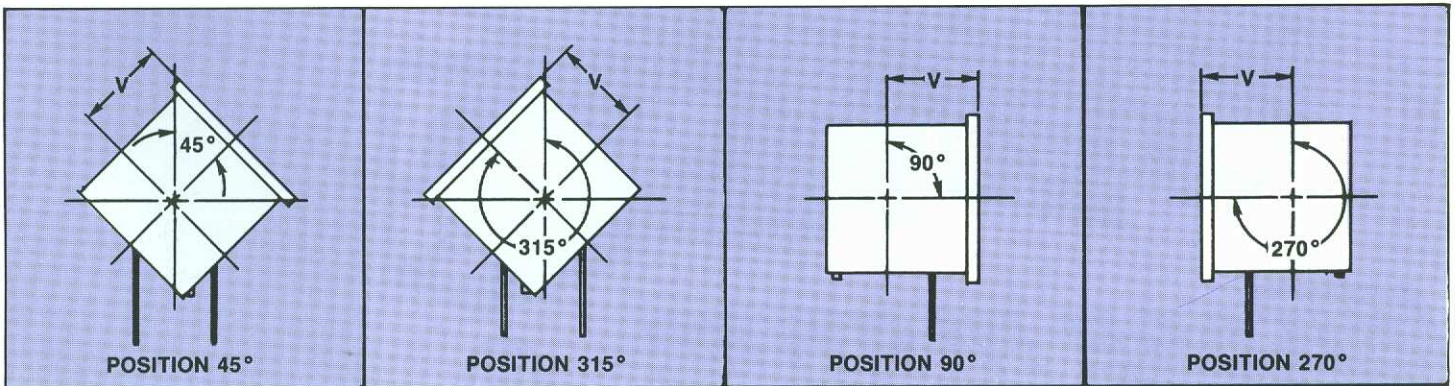
VIEW SHOWN FROM DRIVE SIDE

Bolt-On Inlet Box



DIMENSIONS IN INCHES

FAN SIZE	A	B	C	D	E	F	G	H	J	K	L	M	N	P	R	S	T	U	V	W
11	20	21 ³ / ₄	23	12 ³ / ₄	14	4 ⁷ / ₈	16	4 ³ / ₈	1	3	⁵ / ₈	1 ¹ / ₂	11	³ / ₈	7	8 ¹⁵ / ₃₂	14 ¹ / ₁₆	8	12	20
13	23	24 ³ / ₄	26	14 ¹ / ₄	15 ¹ / ₂	4 ³ / ₈	18	5 ¹ / ₈	1	4	⁵ / ₈	1 ¹ / ₂	12 ¹ / ₂	³ / ₈	9	9 ¹⁹ / ₃₂	16 ⁹ / ₁₆	9	14	23
15	26	27 ³ / ₄	29	15 ³ / ₄	17	3 ⁷ / ₈	20	5 ⁷ / ₈	1	5	⁵ / ₈	1 ¹ / ₂	14	³ / ₈	9	10 ¹ / ₂	18 ¹ / ₈	10	16	26
17	30	31 ³ / ₄	33	17 ³ / ₄	19	3 ⁷ / ₈	24	4 ⁷ / ₈	2	6	⁵ / ₈	1 ¹ / ₂	16	³ / ₈	11 ¹ / ₂	11 ⁷ / ₁₆	20 ¹ / ₄	11 ¹ / ₂	18 ¹ / ₂	30
19	33	34 ³ / ₄	36	19 ¹ / ₄	20 ¹ / ₂	3 ³ / ₈	28	3 ⁵ / ₈	3	7	⁵ / ₈	1 ¹ / ₂	17 ¹ / ₂	³ / ₈	13 ¹ / ₂	12 ⁹ / ₈	21 ⁷ / ₈	12 ¹ / ₂	20 ¹ / ₂	33
21	37	38 ³ / ₄	40	21 ¹ / ₄	22 ¹ / ₂	3 ³ / ₈	30	4 ⁵ / ₈	3	8	⁵ / ₈	1 ¹ / ₂	19 ¹ / ₂	³ / ₈	16 ¹ / ₄	14 ¹³ / ₃₂	25 ¹ / ₁₆	13 ³ / ₄	23 ¹ / ₄	37
23	40	42 ¹ / ₄	44	23 ¹ / ₄	25	5 ¹ / ₈	32	3 ⁵ / ₈	4	8	⁷ / ₈	2	21	¹ / ₂	15 ¹ / ₄	16 ⁷ / ₃₂	27 ⁹ / ₁₆	14 ³ / ₄	25 ¹ / ₄	40
26	46	48 ¹ / ₄	50	26 ¹ / ₄	28	4 ¹ / ₈	36	5 ¹ / ₈	4	10	⁷ / ₈	2	24	¹ / ₂	19 ¹ / ₄	17 ²¹ / ₃₂	30 ⁹ / ₁₆	16 ³ / ₄	29 ¹ / ₄	46
29	51	53 ¹ / ₄	55	28 ³ / ₄	30 ¹ / ₂	4 ⁵ / ₈	40	4 ³ / ₈	5	11	⁷ / ₈	2	26 ¹ / ₂	¹ / ₂	22 ¹ / ₂	18 ³ / ₄	33	18 ¹ / ₂	32 ¹ / ₂	51
33	58	60 ¹ / ₄	62	32 ¹ / ₄	34	4 ¹ / ₈	46	4 ¹ / ₈	6	13	⁷ / ₈	2	30	¹ / ₂	24 ¹ / ₄	20 ¹⁵ / ₃₂	36 ⁵ / ₈	20 ³ / ₄	37 ¹ / ₄	58
37	65	67 ¹ / ₄	69	35 ³ / ₄	37 ¹ / ₂	3 ⁵ / ₈	52	3 ⁷ / ₈	7	15	⁷ / ₈	2	33 ¹ / ₂	¹ / ₂	29 ¹ / ₄	23 ³ / ₄	41 ³ / ₄	23 ¹ / ₈	41 ⁷ / ₈	65
41	70	72 ³ / ₄	75	39 ¹ / ₄	41 ¹ / ₂	4 ³ / ₈	56	3 ⁵ / ₈	8	16	1 ¹ / ₈	2 ¹ / ₂	36 ¹ / ₂	⁵ / ₈	32	24 ¹³ / ₁₆	44 ¹ / ₁₆	25	45	70



POSITION DETERMINED FROM DRIVE SIDE OF FAN

Chicago Radial Bladed Pressure Blowers

Cast Aluminum Pressure Blowers

Chicago's economical Design 38 Pressure Blowers are especially suited for combustion air, fume and dust control, forced air drying and cooling, and conveying. Nine housing sizes, 8" to 18.5", can each be fitted with multiple wheel/inlet configurations to match required performance. Volumes from 50 to 5,000 CFM and pressures to 24"wg. Ask for Bulletin CAPB.

Single Stage Pressure Blowers

Chicago's Design 53 Pressure Blowers are suited for higher pressure, heavier duty burners and furnaces in addition to a wider range of process applications and conveying systems. The blowers are available in four arrangements and eight discharge positions. Volumes from 250 to 5,200 CFM and pressures to 59"wg. Ask for Bulletin CPB.

Pressure Air Fans

Chicago's custom design Pressure Air Fan is recommended for high pressure primary air on burners, pulverizers, fluidizers and scrubbers, plus pneumatic conveying systems handling harsh materials. Variable widths and alternate corrosion resistant construction is available to meet individual performance and application requirements. Wheel diameters from 20" to 120" deliver volumes to 50,000 CFM and pressures to 70"wg. Ask for Bulletin PA.



*Setting the
Standard
For Quality*

CHICAGO

*Innovative Engineering
Through Application Analysis*



*Quality Fans
Shaped With
Skill and Pride*



*Global Service Only a
Click Away*

**Sales Offices
Throughout
North America**

*Chicago Blower Fans
are also manufactured
worldwide:*

Argentina, Australia, Brazil,
Chile, China, Colombia,
Denmark, Germany, Greece,
Holland, Hong Kong, India,
Indonesia, Israel, Italy,
Japan, Korea, Malaysia,
New Zealand, Norway,
Philippines, Portugal,
Saudi Arabia, Singapore,
South Africa, Spain, Sweden,
Thailand, Taiwan, Turkey,
Venezuela.



Your Primary Source For Every Fan Requirement

General Duty -

*Airfoil and vane axial
fans for clean exhaust
or supply air*

Industrial Duty -

*Fans to handle
dirty and corrosive
environments*

Heavy Duty -

*Custom engineered
fans for specific
applications*

**CHICAGO BLOWER
CORPORATION**

1675 Glen Ellyn Road, Glendale Heights, Illinois 60139
Phone: 630-858-2600 • Fax: 630-858-7172

www.chicagoblower.com e-mail: fans@chicagoblower.com